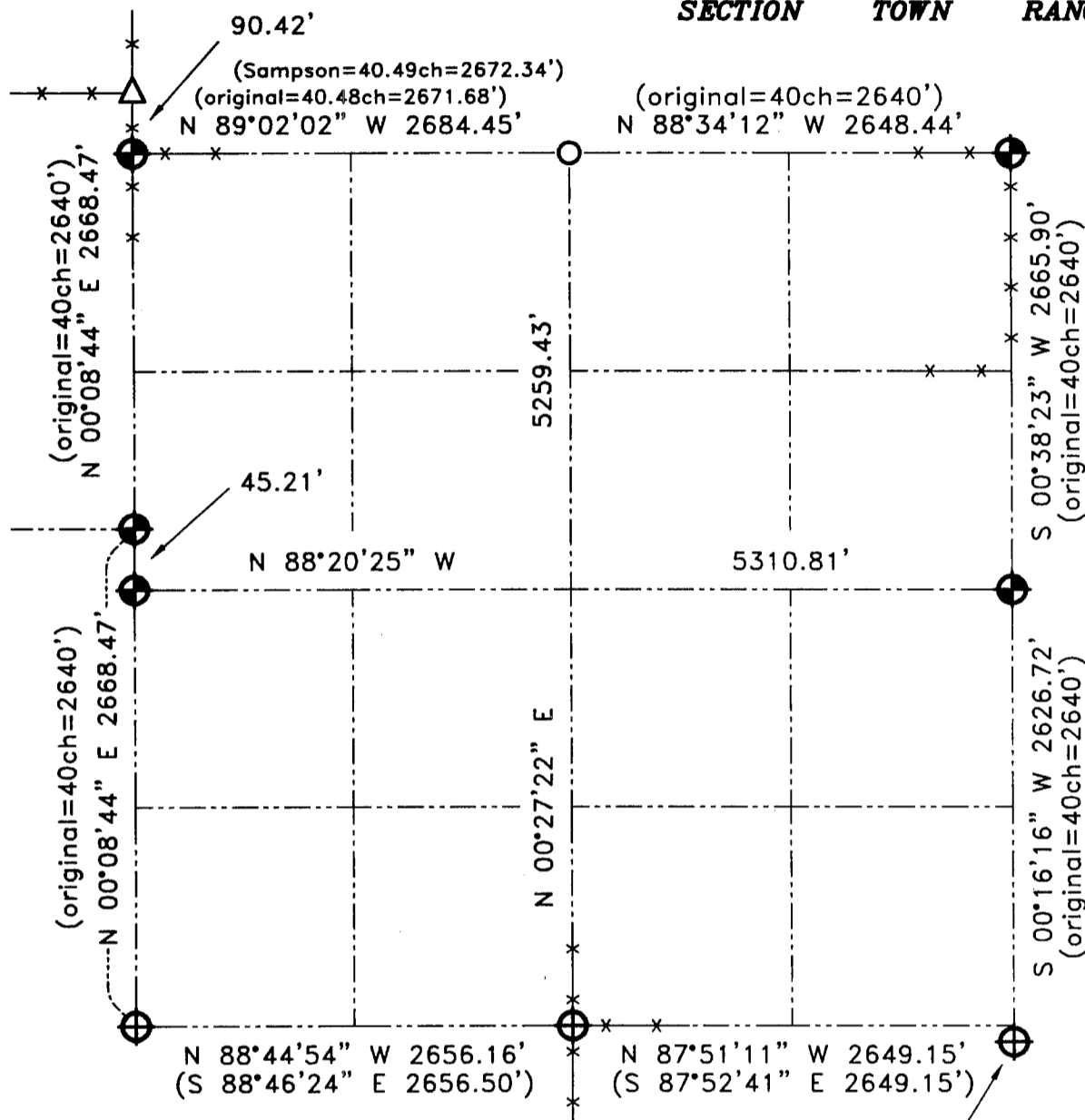


# GRANT COUNTY SECTION SUMMARY

31 - 3N - 3W  
SECTION      TOWN      RANGE



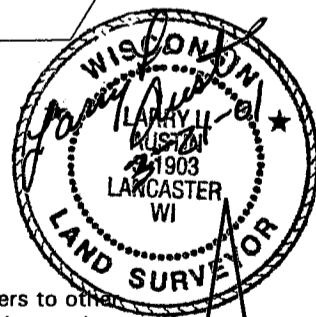
Corner falls in river, monument located S 00°03'22" W 41.55' from corner, see tiesheet by Curtis Crook for further detail.

### LEGEND

- Number 8 x 30" rebar set with Grant County Aluminum Cap
- Existing DOT Aluminum Monument
- Existing 1" Iron pipe
- Existing Number 6 Iron bar
- Recorded as
- Appx existing fence location

### NOTE:

Relationships of all section corners to other section corners shall be shown hereon by bearing and distance or grid coordinates.  
~ Bearing reference below ~



Bearings referenced to the East line of the Northeast Quarter of Section 31, which is assumed to bear S 00°38'23" W.