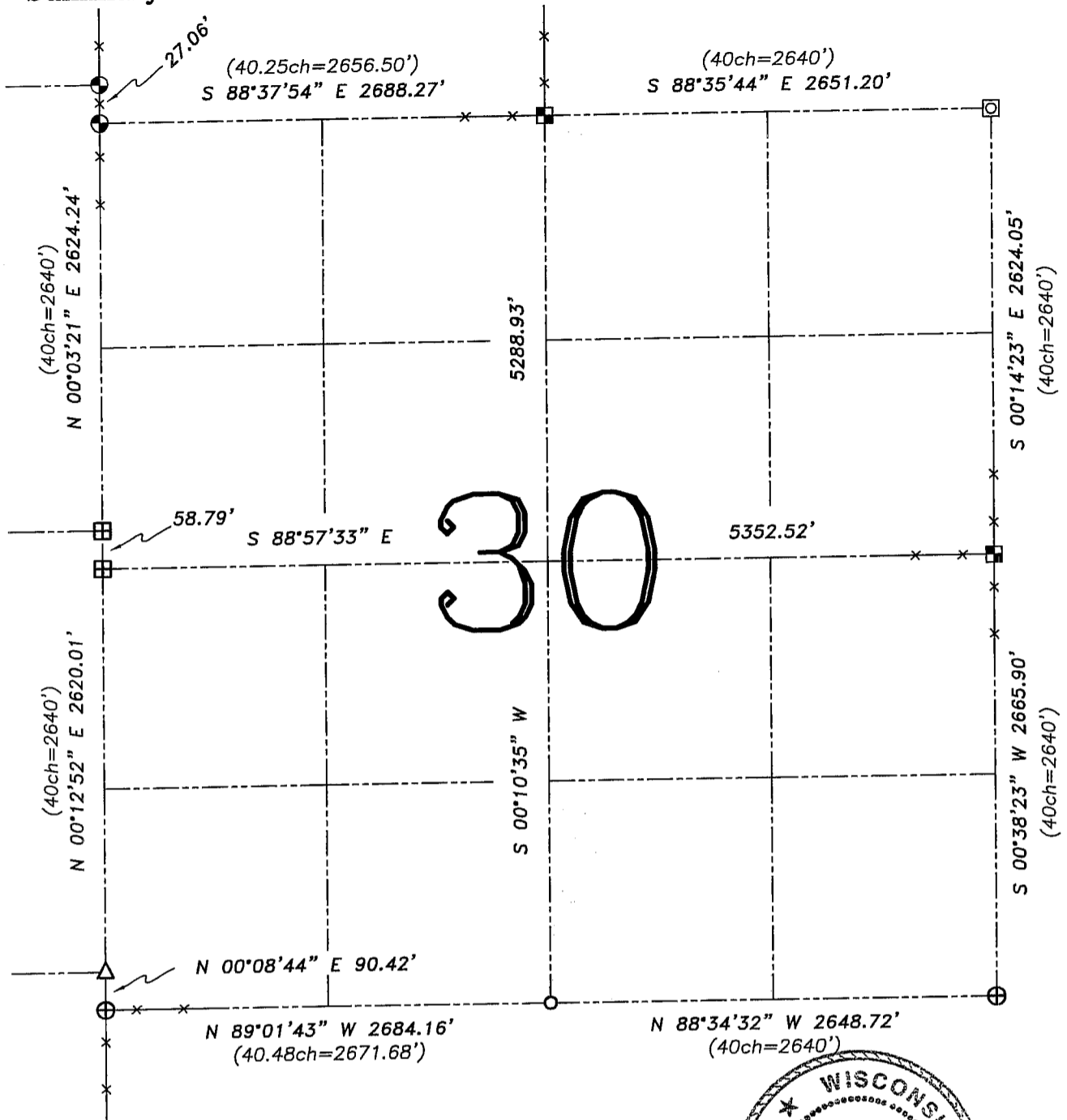


U.S. PUBLIC LAND SURVEY MONUMENT RECORD – GRANT COUNTY, WI

Summary of Section 30, Town 3 North, Range 3 West, Town of Potosi



LEGEND

- ⊕ No. 8 rebar found with Grant County Aluminum Cap
- ⊙ No. 8 x 30" rebar set with Grant County Aluminum Cap – wt=2.67#/l.f.
- No. 6 rebar found
- ⊠ Aluminum Monument found with Grant County Aluminum Cap
- ⊞ No. 6 iron bar found with Grant County Aluminum Cap
- △ 1" diameter iron pipe found
- ⊡ No. 8 rebar found
- () Recorded as
- x— Approximate location of existing fence



Relationship of all section corners to other section corners shall be shown hereon by bearing and distance or grid coordinates. Bearing reference shown below.

Dated this 31st day of August, 2005

Larry L. Austin
 Larry L. Austin S-1903

Bearings referenced to the South line of the SE 1/4 of this Section, which is assumed to bear N 88°34'32" W.

SKETCH NOT TO SCALE



Austin Engineering LLC

4211 HWY 81 E, LANCASTER, WI 53813
 PHONE 608-723-6363 FAX 608-723-6702

JOB NUMBER: 05S206
 FIELDBOOK: TDSR, 2520
 G:\T3NR3W\29
 H:\TIE\T3NR3W\30SUM

DRAWN BY: SW AUSTIN
 APPROVED: LL AUSTIN