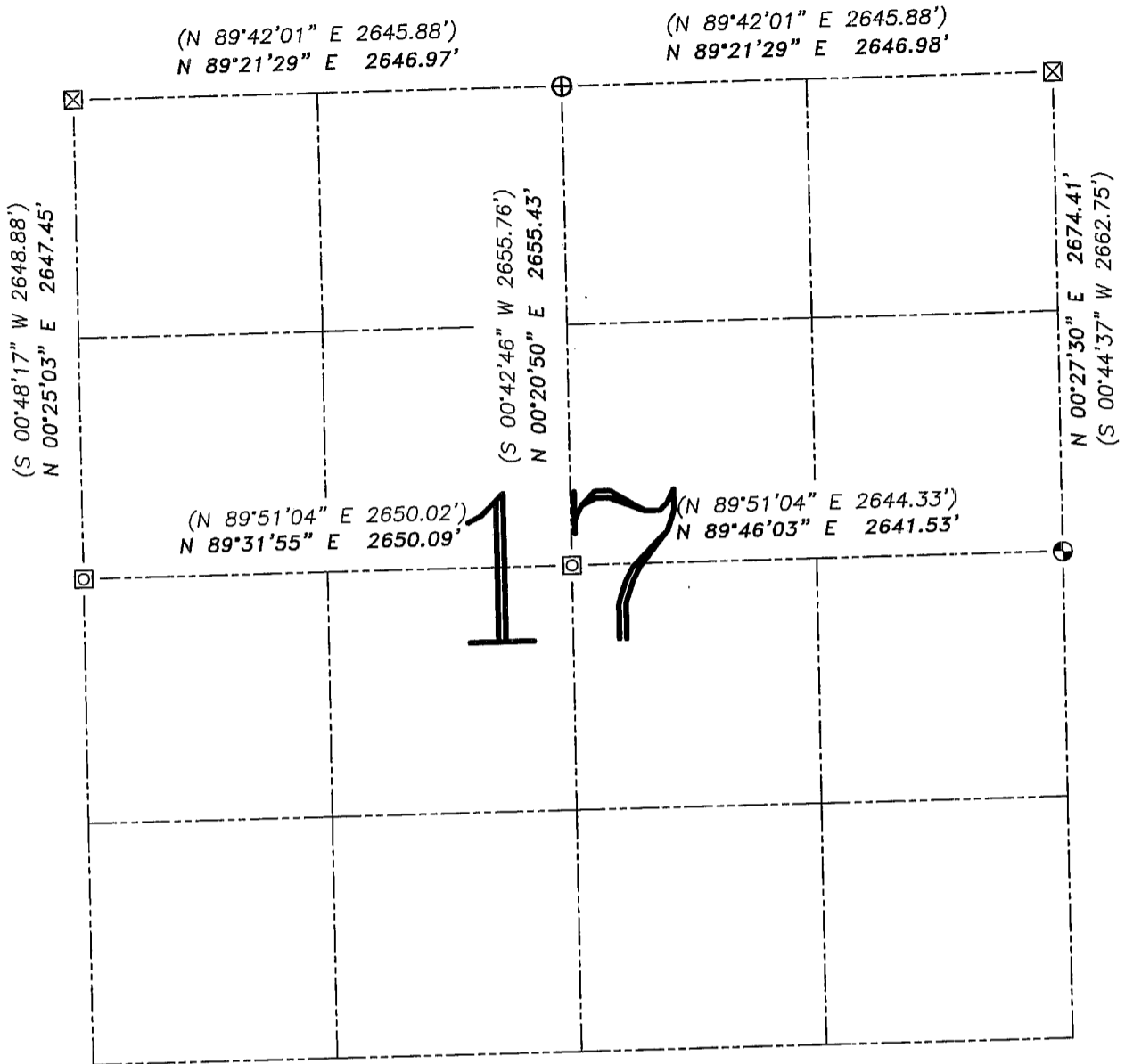


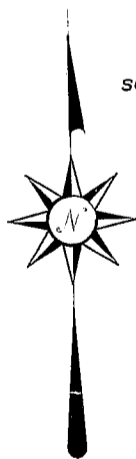
U.S. PUBLIC LAND SURVEY MONUMENT RECORD – GRANT COUNTY, WI

Summary of Section 17, Town 3 North, Range 3 West, Town of Potosi



LEGEND

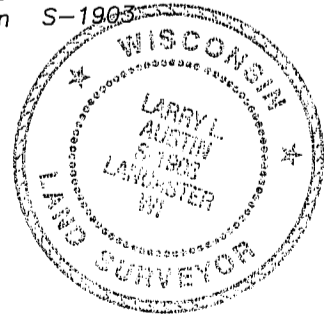
- ⊕ No. 8 rebar found with Grant County Aluminum Cap
- ⊙ No. 8 x 30" rebar set with Grant County Aluminum Cap – wt=2.67#/l.f.
- ⊠ No. 5 rebar found
- ⊞ Stone monument found
- () Recorded as
- x— Approximate location of existing fence



Relationship of all section corners to other section corners shall be shown hereon by bearing and distance or grid coordinates. Bearing reference shown below.

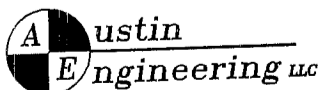
Dated this 30th day of December, 2005

Larry L. Austin
Larry L. Austin S-1903



Bearings referenced to the West line of the NW 1/4 of Section 17, which is assumed to bear N 00°25'03" E

SKETCH NOT TO SCALE



4211 HWY 81 E, LANCASTER, WI 53813
PHONE 608-723-6363 FAX 608-723-6702

JOB NUMBER: 03S057
FIELDBOOK: TDSR, 2516
G:\T3NR3W\T3NR3W
H:\TIE\T3NR3W\17SUM

DRAWN BY: ML DIGMAN
APPROVED: LL AUSTIN