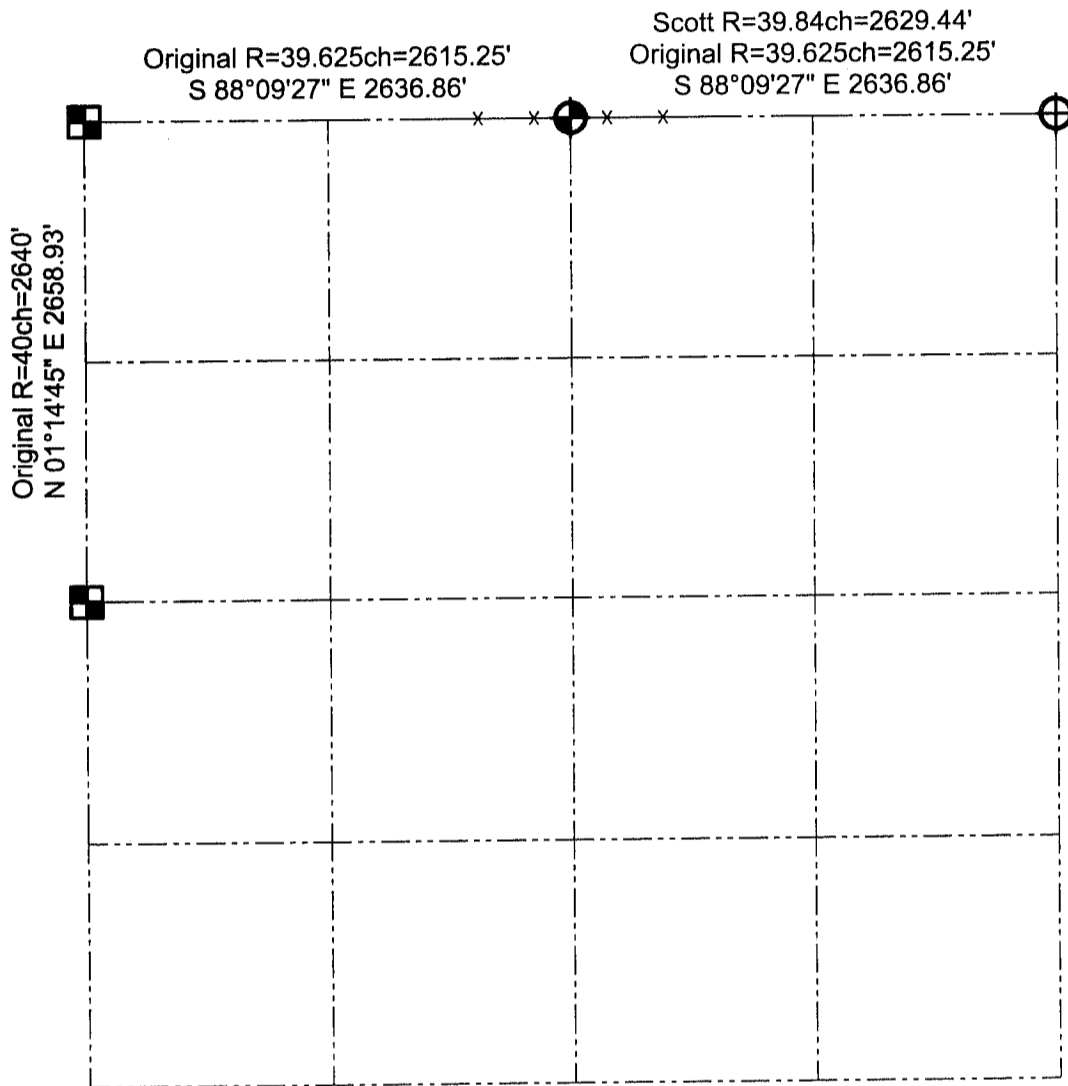





GRANT COUNTY SECTION SUMMARY

$\frac{13}{SECTION} - \frac{3N}{TOWN} - \frac{3W}{RANGE}$



LEGEND

-  Number 8 x 30" rebar set with Grant County Aluminum Cap
-  Number 8 rebar found with Grant County Aluminum Cap
-  Bernsten A-1 monument found

NOTE:

Relationships of all section corners to other section corners shall be shown hereon by bearing and distance or grid coordinates.
~Bearing reference below~



Bearings referenced to the North line of the Northwest Quarter of Section 13, which is assumed to bear S 88°09'27" E.

AUSTIN ENGINEERING, LLC
4211 HWY 81 E, LANCASTER, WI 53813
PHONE 608-723-6363 FAX 608-723-6702

FIELDBOOK: SDR33, 2035
G:\T4NR3W\31
C:\SC14\SWA\TIE\T3NR3W\13SUM

DRAWN BY: SW AUSTIN
APPROVED: LL AUSTIN
CREW: BS - SB - SA - TF