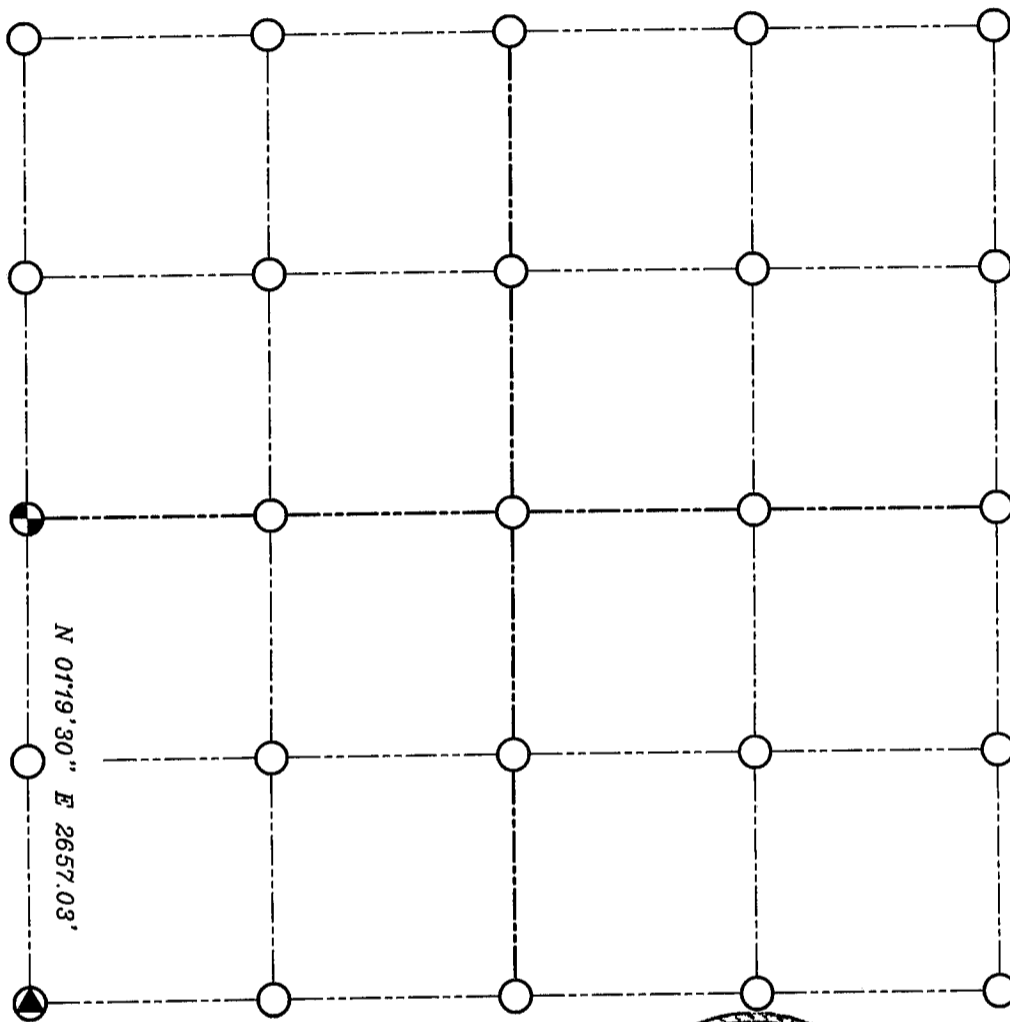




GRANT COUNTY

SECTION SUMMARY

$\frac{12}{\text{SECTION}} - \frac{3N}{\text{TOWN}} - \frac{3W}{\text{RANGE}}$



LEGEND

-  RAILROAD SPIKE SET
-  CAST ALUMINUM MONUMENT FOUND

NOTE:

Relationships of all section corners to other section corners shall be shown hereon by bearing and distance or grid coordinates
 Show or describe bearing reference



BEARINGS REFERENCED TO THE WEST LINE OF THE
 SOUTHWEST 1/4 WHICH IS ASSUMED TO BEAR N 01'19'30" E.