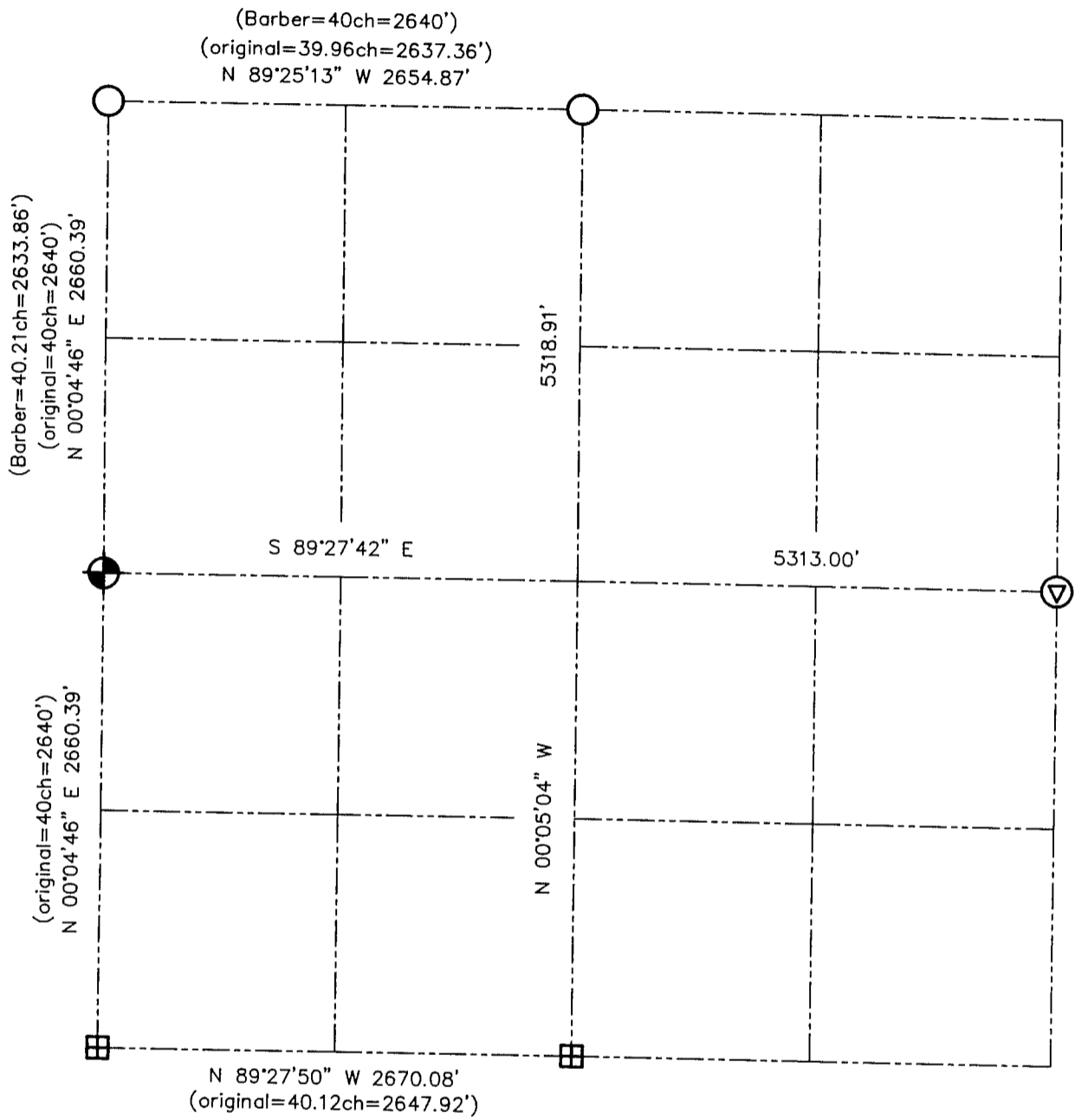







**U.S. PUBLIC LAND SURVEY MONUMENT RECORD - GRANT COUNTY, WI**  
 Summary of Section 11, Town 3 North Range 3 West, Town of Potosi



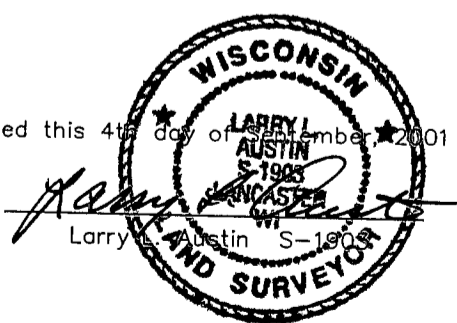
**LEGEND**

-  NUMBER 8 x 30" REBAR SET WITH GRANT COUNTY ALUMINUM CAP
-  NUMBER 6 REBAR FOUND WITH GRANT COUNTY ALUMINUM CAP
-  BERNSTEN CAST ALUMINUM MONUMENT FOUND
-  RAILROAD SPIKE FOUND
-  RECORDED AS



Relationship of all section corners to other section corners shall be shown hereon by bearing and distance or grid coordinates. Bearing reference shown below.

Dated this 4th day of September, 2001



Bearings referenced to the East-West 1/4 line of Section 11, which is assumed to bear S 89°27'42" E.

SKETCH NOT TO SCALE

**AUSTIN ENGINEERING, LLC**  
 4211 HWY 81 EAST, LANCASTER, WI 53813  
 PHONE 608-723-6363 FAX 608-723-6702

FIELDBOOK: SDR33, 2119  
 G: \T3NR3W\11  
 C: \SWA\TIE\T3NR3W\11SUM

CREW: BS-SB-SA-TF  
 DRAWN BY: SW AUSTIN  
 APPROVED: LL AUSTIN