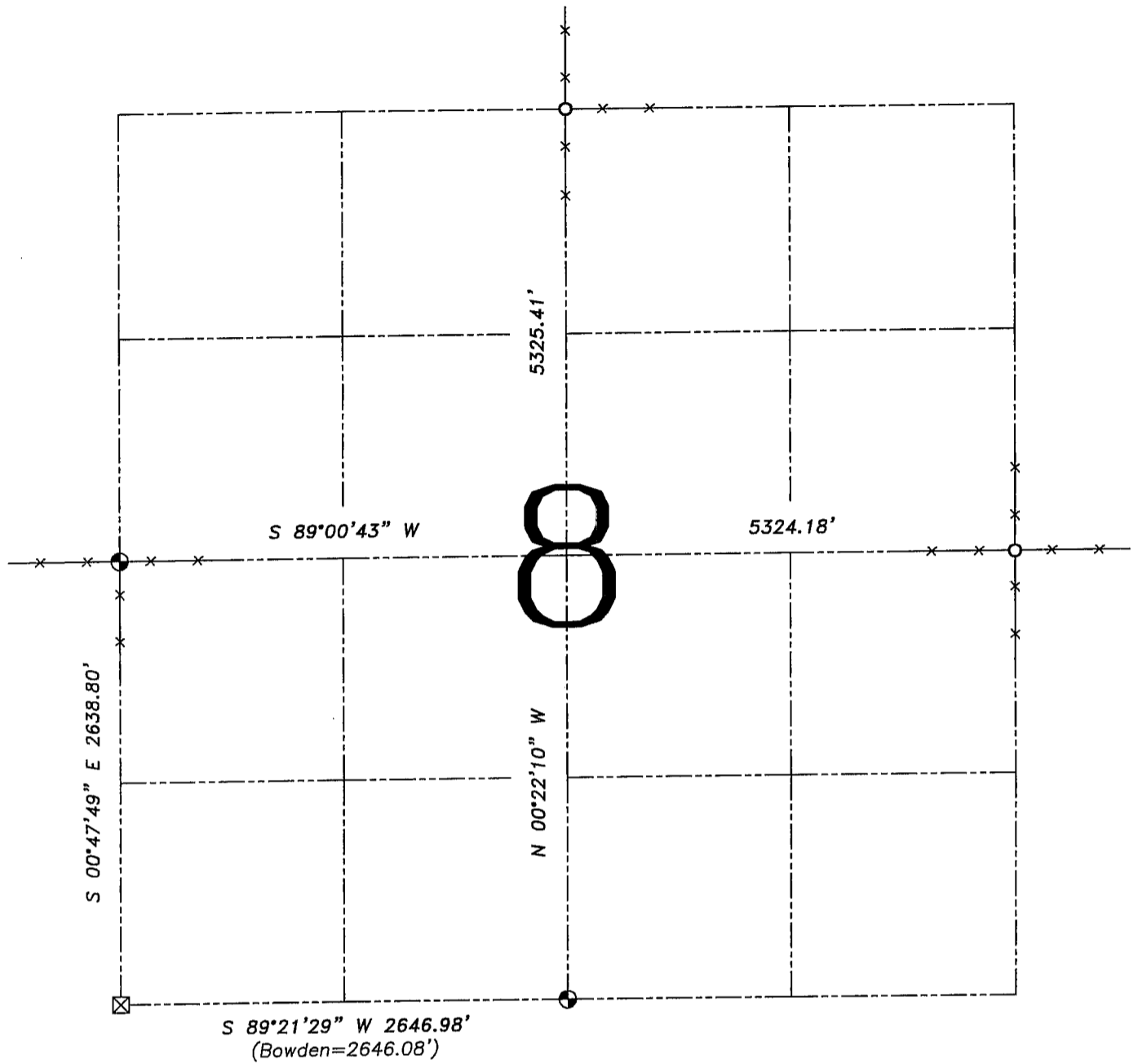


U.S. PUBLIC LAND SURVEY MONUMENT RECORD – GRANT COUNTY, WI

Summary of Section 8, Town 3 North, Range 3 West, Town of Potosi



LEGEND

⊙ No. 8 x 30" rebar set with Grant County Aluminum Cap – wt=2.67#/l.f.

○ No. 6 rebar found

⊠ Stone monument found

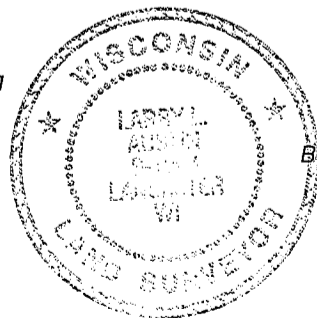
() Recorded as

—x— Approximate location of existing fence

Relationship of all section corners to other section corners shall be shown hereon by bearing and distance or grid coordinates. Bearing reference shown below.

Dated this 22nd day of July, 2005

Larry L. Austin
Larry L. Austin S-1903



Bearings referenced to the South line of the SW 1/4 of this Section, which is assumed to bear S 89°21'29" W

SKETCH NOT TO SCALE



Austin Engineering LLC

4211 HWY 81 E, LANCASTER, WI 53813
PHONE 608-723-6363 FAX 608-723-6702

JOB NUMBER: 05S076
FIELDBOOK: TDSR, 2507
G:\T3NR3W\T3NR3W
H:\TIE\T3NR3W\08SUM

DRAWN BY: SW AUSTIN
APPROVED: LL AUSTIN