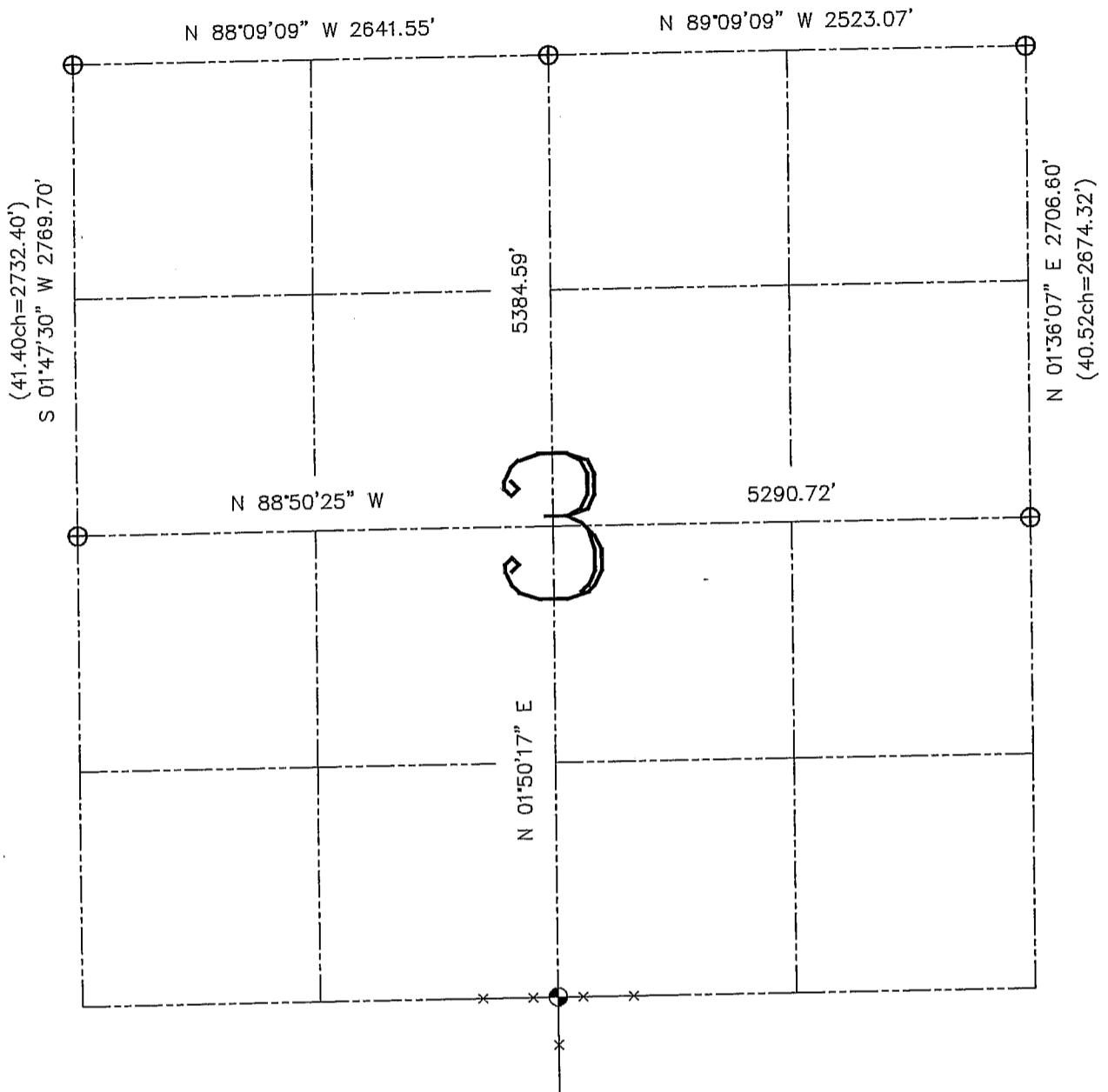


**U.S. PUBLIC LAND SURVEY MONUMENT RECORD – GRANT COUNTY, WI**

Summary of Section 3, Town 3 North, Range 3 West, Town of Potosi



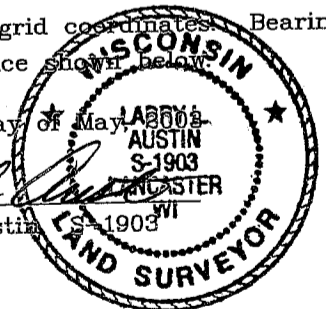
**LEGEND**

- ⊕ No. 6 rebar found with Grant County Aluminum Cap
- ⊙ No. 8 x 30" rebar set with Grant County Aluminum Cap – wt=2.67#/l.f.
- ( ) Recorded as
- x— Approximate location of existing fence

Relationship of all section corners to other section corners shall be shown hereon by bearing and distance or grid coordinates. Bearing reference shown below.

Dated this 10th day of May, 2003

*Larry L. Austin*  
Larry L. Austin



Bearings referenced to the East-West Quarter line of this Section, which is assumed to bear N 88°50'25" W.

SKETCH NOT TO SCALE

**AUSTIN ENGINEERING, LLC**  
4211 HWY 81 EAST, LANCASTER, WI 53813  
PHONE 608-723-6363 FAX 608-723-6702

FIELDBOOK: 2104  
G: \T4NR3W\31  
H: \TIE\T3NR3W\03SUM

CREW: BS-SB-SA-BD  
DRAWN BY: SW AUSTIN  
APPROVED: LL AUSTIN