

U. S. PUBLIC LAND SURVEY MONUMENT RECORD

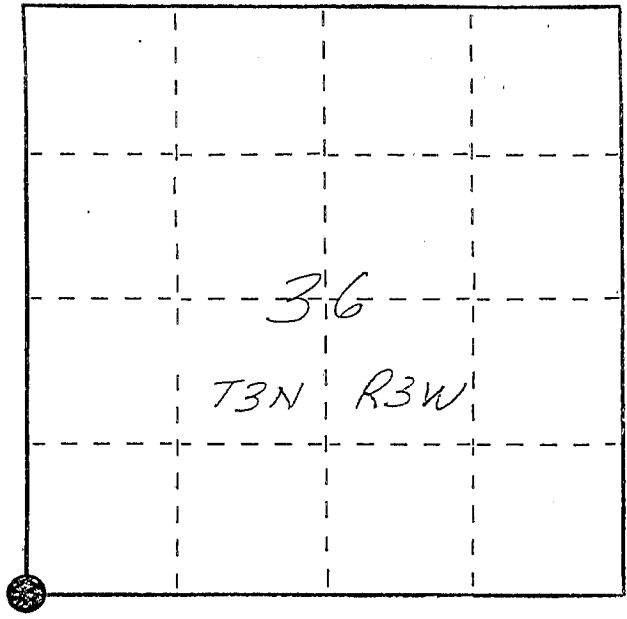
INSTRUCTIONS: This record shall show the location of the corner and shall include all of the following nine elements (a through i).

- (a) Identify the corner by reference to the U.S. public land survey system.
- = Corner monument restored.

SW corner section 36
 T3N R3W of the
 4th P.M.
 Town of Potosi
 Grant County, Wisconsin.



APR 27 1988



- (b) Describe any record evidence, monument evidence, occupational evidence, testimonial evidence or any other material evidence you considered, and whether the monument was found or placed.

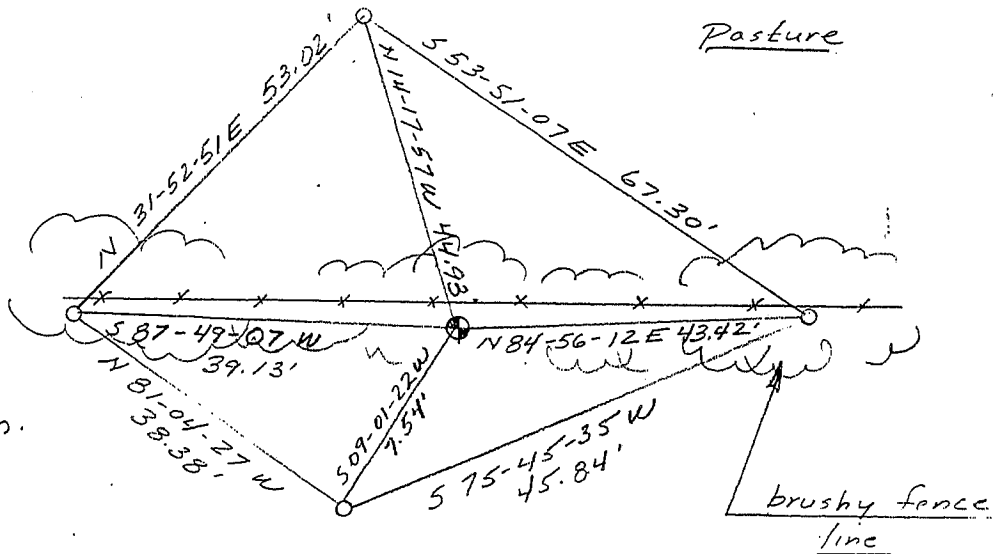
Monument set by intersecting south line of section 36 with west line of section 36. This location agrees with other corners set in the area. The south line section 36 was run from reestablished SE corner through a spike found at an ancient fence post at the SE-SW-SW 36. The west line of section 36 was run from the reestablished NW corner, southerly through a RR spike found at the NW-SW-SW 36. This location was accepted after considering other corners set in

- (c) In the plan view drawing below, provide reference ties to at least 4 witness monuments, or, if the location is within a municipality, to at least 2 witness monuments. (Witness monuments shall be made of concrete, natural stone, iron or other equally durable material, ~~except wood.~~) Describe witness monuments.

the area, the original survey notes, various monuments found, not of record, a 1978 survey by B.D. Bowden, a 1940 survey by E.E. Clarke, and the 1935 hwy 61 R/W plat.

- (d) Show a plan view drawing depicting the relevant monuments and reference ties which is sufficient in detail to enable accurate relocation of the corner monument if the corner monument is disturbed. Indicate north.

No Scale
 Bearings - Wis Grid



- Berntsen A-1 mon. set at grade
- Ref. mon. - 3/4" x 24" rebar w/cap.

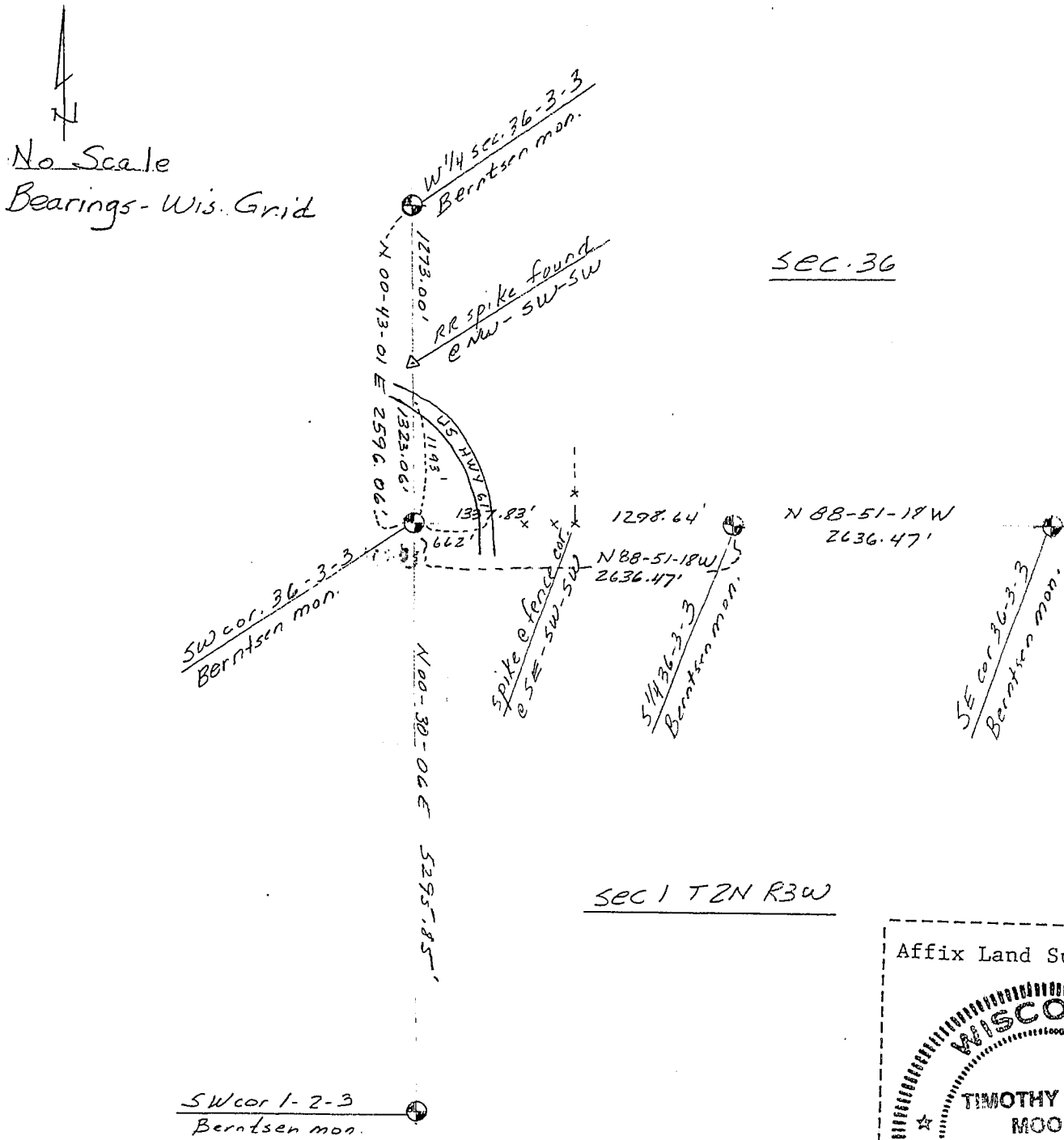
@cropland

(e) Describe any material discrepancy between the location of the corner as restored or reestablished and the location of that corner as previously restored or reestablished by distance and direction. Show the discrepancy on the plan view drawing under (d), above. Show the distances between the corner as previously restored or reestablished and (1) the corner as restored or reestablished, and (2) to at least 2 of the witness monuments shown on the drawing in (d), above.

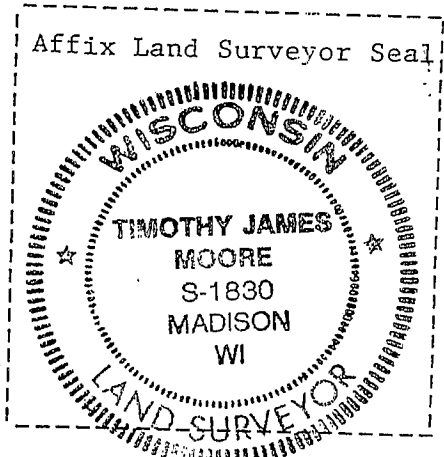
Bruce Bowden survey tied to W¹/₄ sec. 36 and SW cor. 36 but after retracing his survey nothing was found at these locations. Bowden's locations did not agree with E.E. Clarke's 1940 survey. Monument set after reestablishing W¹/₄ cor. 36 according to E.E. Clarke's survey. Bowden's RR spike was held for ^{line}.

(f) Was the corner restored through acceptance of (1) an obliterated evidence location, or, (2) a found perpetuated location?

(g&h) Was the corner reestablished through lost corner proportionate methods? If so, show the method, including the directions and distances to other public land survey corners used as evidence or used for proportioning in determining the corner location?



(i) I, Timothy J. Moore
 (type or print name) certify that the corner location shown on this record was determined by me or under my direction and control and that this U.S. Public Land Survey Monument Record is correct and complete to the best of my knowledge and belief.



Signature Timothy J. Moore Date 3-8-88