

U.S. PUBLIC LAND SURVEY MONUMENT RECORD - GRANT COUNTY, WI

Section 35, Town 3 North Range 3 West, Town of Potosi (a)

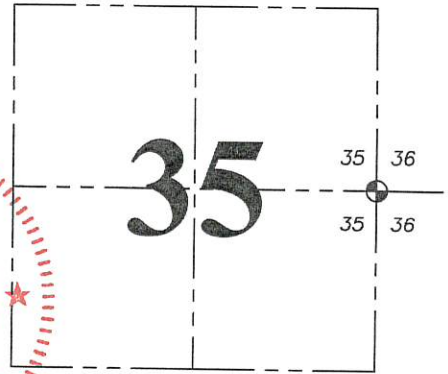
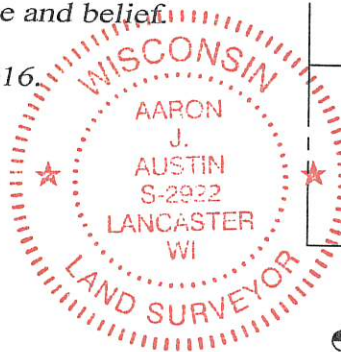
NOTE: This form is intended and designed to fulfill all requirements of the Wisconsin Administrative Code Chapter A-E 7.08, U.S. Public Land Survey Monument Record (3) (a) (b) (c) (d) (e) (f) (g) (h) (i).

CERTIFICATE: (i)

I, Aaron J. Austin, Wisconsin Professional Land Surveyor, do hereby certify that the corner location on this record was determined by me and/or under my direct supervision and that this U.S. Public Land Survey Monument Record is correct and complete to the best of my knowledge and belief.

Dated this 14th day of September, 2016.

Aaron J Austin
Aaron J. Austin, S-2922



⊕ = CORNER LOCATION

HISTORY OF CORNER ESTABLISHMENT:

Robert Clark set the original corner in 1833.
Bruce Bowden set a Railroad Spike at the corner on Certified Survey Map Number 117.
Timothy Moore set a Bernsten A-1 Monument and prepared a Survey Monument Record dated 3-8-1988.

DESCRIPTION OF CORNER EVIDENCE FOUND: (b) (f) (g) (h)

I set a 1/2" x 4 3/4" Steel Cotton Gin Spike at the retraced location of Moore's monument, based upon measurements taken to a Survey prepared by myself dated 5-14-2015 filed in Book 37, Page 5. I set four new witness corners after I verified the monument's location with G.P.S. and E.D.M. methods.

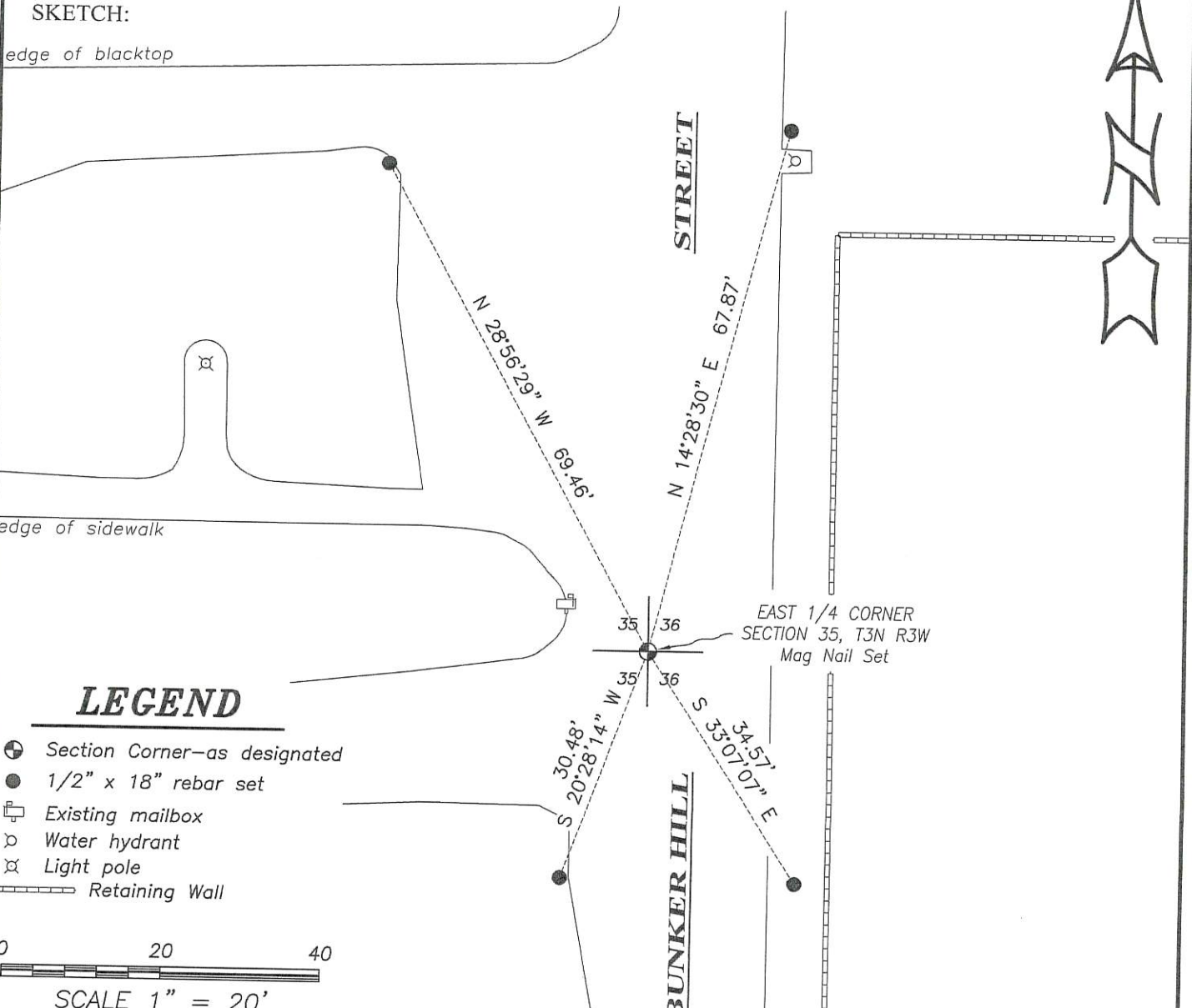
DESCRIPTION OF CORNER AND WITNESS MONUMENTS, references and accessories used to perpetuate the original or re-established location of this corner. (c) (d) (e)

Witnesses to corner location Shane Austin, Owen Austin. Drawn by Owen Austin.

SKETCH:

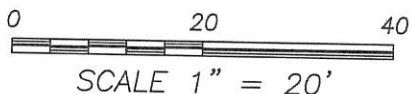
edge of blacktop

edge of sidewalk



LEGEND

- ⊕ Section Corner—as designated
- 1/2" x 18" rebar set
- ☐ Existing mailbox
- ⊘ Water hydrant
- ⊗ Light pole
- ▬▬▬ Retaining Wall



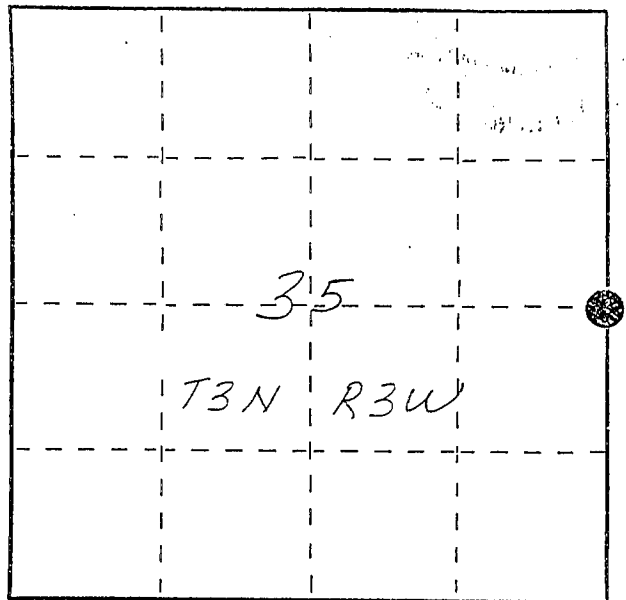
U. S. PUBLIC LAND SURVEY MONUMENT RECORD

INSTRUCTIONS: This record shall show the location of the corner and shall include all of the following nine elements (a through i).

(a) Identify the corner by reference to the U.S. public land survey system.

⊙ = Corner monument restored.

*E¹/₄ corner section 35
T3N R3W of the
4th P.M.
Town of Potosi
Grant County, Wisconsin*



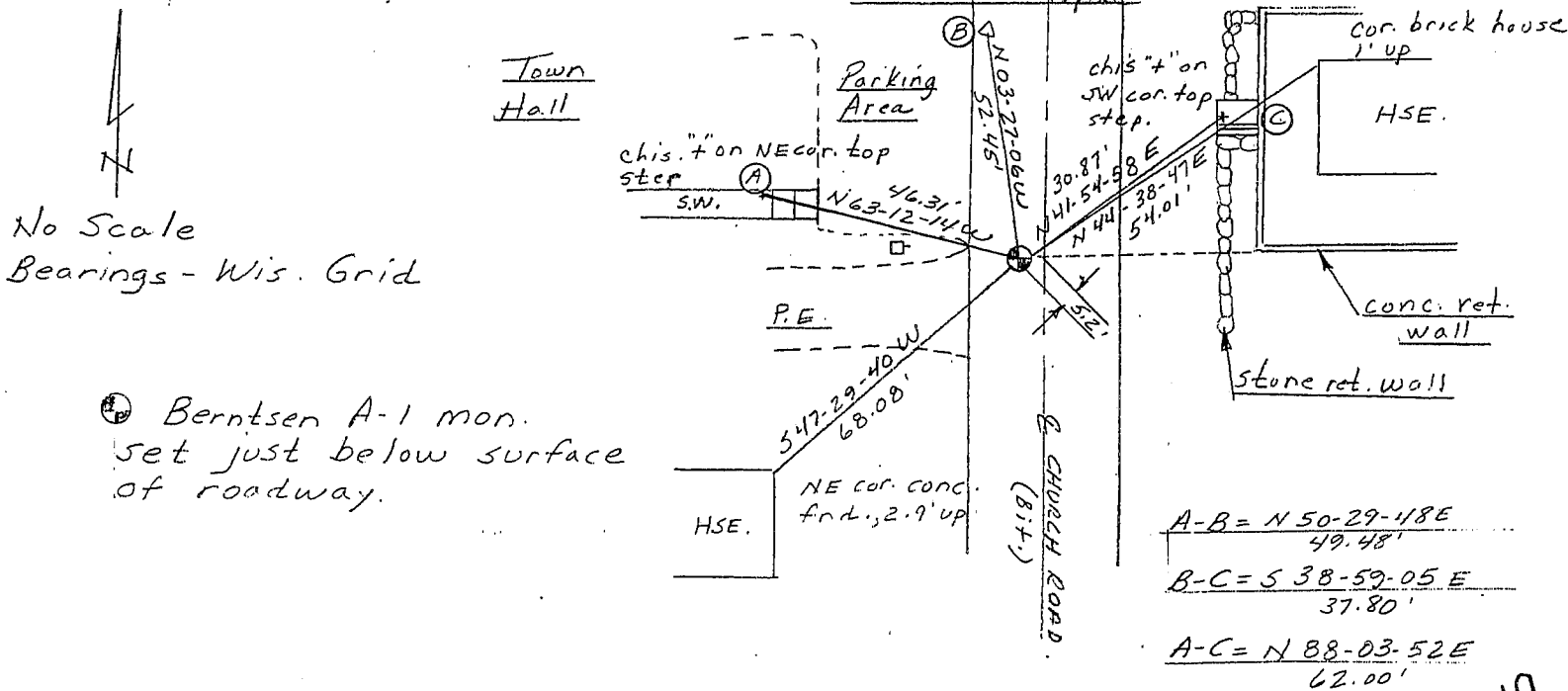
APR 27 1988

(b) Describe any record evidence, monument evidence, occupational evidence, testimonial evidence or any other material evidence you considered, and whether the monument was found or placed.

Monument set using a 1978 Bruce D. Bowden Survey and a 1940 E.E. Clarke survey. Hold Bowden's RR spike at NE-SE-SE 35 and went northerly the distance recorded in Clarke's survey to set the corner.

(c) In the plan view drawing below, provide reference ties to at least 4 witness monuments, or, if the location is within a municipality, to at least 2 witness monuments. (Witness monuments shall be made of concrete, natural stone, iron or other equally durable material, ~~except~~ ~~wood~~.) Describe witness monuments.

(d) Show a plan view drawing depicting the relevant monuments and reference ties which is sufficient in detail to enable accurate relocation of the corner monument if the corner monument is disturbed. Indicate north.



(e) Describe any material discrepancy between the location of the corner as restored or reestablished and the location of that corner as previously restored or reestablished by distance and direction. Show the discrepancy on the plan view drawing under (d), above. Show the distances between the corner as previously restored or reestablished and (1) the corner as restored or reestablished, and (2) to at least 2 of the witness monuments shown on the drawing in (d), above.

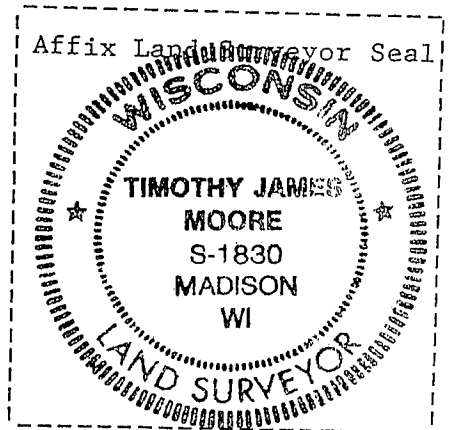
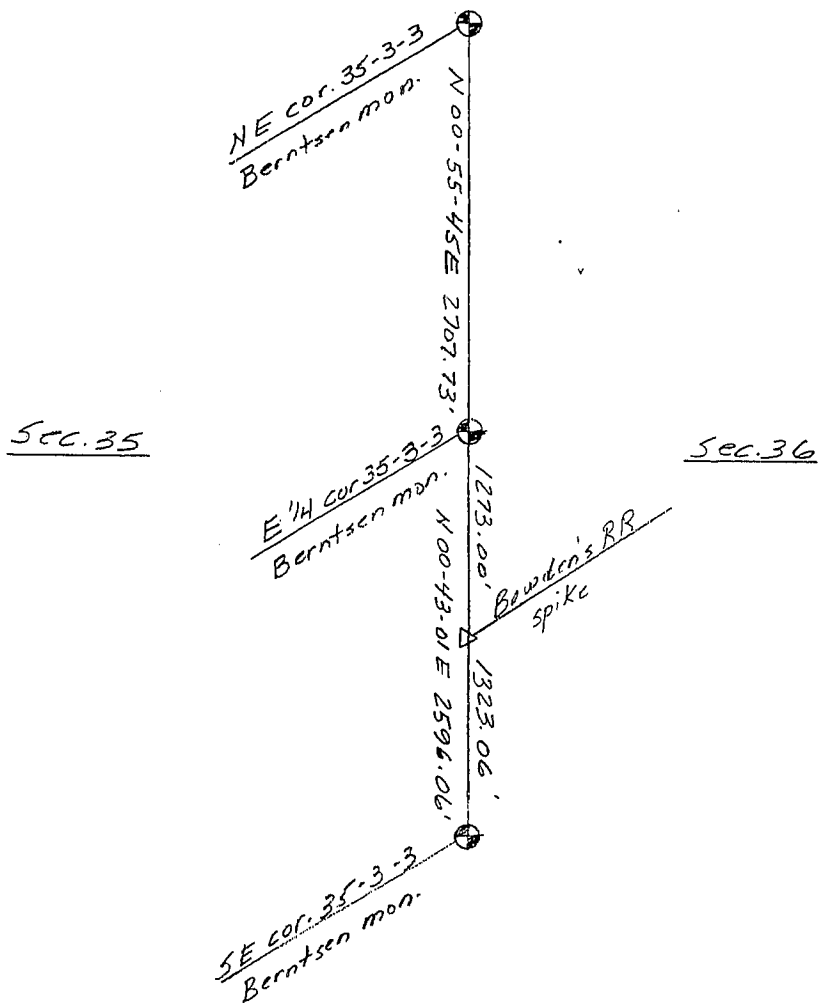
Bowden ties to the NE and SE corners of section 35 but when retracing his survey no corners could be found. His E 1/4 corner section 35 does not agree with Clarke's. Held Bowden's RR spike and set corner according to Clarke's survey.

(f) Was the corner restored through acceptance of (1) an obliterated evidence location, or, (2) a found perpetuated location?

(g&h) Was the corner reestablished through lost corner proportionate methods? If so, show the method, including the directions and distances to other public land survey corners used as evidence or used for proportioning in determining the corner location?



No Scale
Bearings - Wis Grid



(i) I, Timothy J. Moore
(type or print name) certify that the corner location shown on this record was determined by me or under my direction and control and that this U.S. Public Land Survey Monument Record is correct and complete to the best of my knowledge and belief.

Timothy J. Moore
Signature

3-8-88
Date