

U.S. PUBLIC LAND SURVEY MONUMENT RECORD - GRANT COUNTY, WI

Section 33, Town 3 North Range 3 West, Town of Potosi (a)

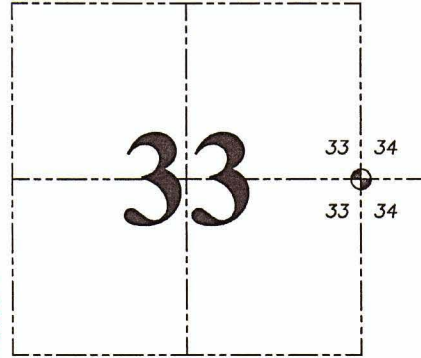
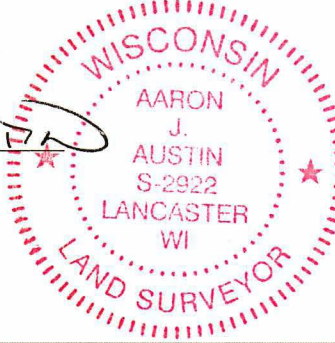
NOTE: This form is intended and designed to fulfill all requirements of the Wisconsin Administrative Code Chapter A-E 7.08, U.S. Public Land Survey Monument Record (3) (a) (b) (c) (d) (e) (f) (g) (h) (i).

CERTIFICATE: (i)

I, Aaron J. Austin, Wisconsin Professional Land Surveyor, do hereby certify that the corner location on this record was determined by me and/or under my direct supervision and that this U.S. Public Land Survey Monument Record is correct and complete to the best of my knowledge and belief.

Dated this 6th day of July, 2022.

Aaron J. Austin
Aaron J. Austin, S-2922



⊕ = CORNER LOCATION

Grant County Coordinates:
NAD 83 (2011)
Northing: 465,858.46
Easting: 816,137.85

HISTORY OF CORNER ESTABLISHMENT:

Original corner was set in 1833 by Robert Clark.
Larry Austin set a 1" Rebar with a Grant County Aluminum Cap and prepared a Survey Monument Record dated 9/2/2003.

DESCRIPTION OF CORNER EVIDENCE FOUND: (b) (f) (g) (h)

I found the Aluminum Capped Rebar that Larry set. I set four witness corners after I verified the Corner's location with G.P.S. and E.D.M. methods.

DESCRIPTION OF CORNER AND WITNESS MONUMENTS, references and accessories used to perpetuate the original or re-established location of this corner. (c) (d) (e)

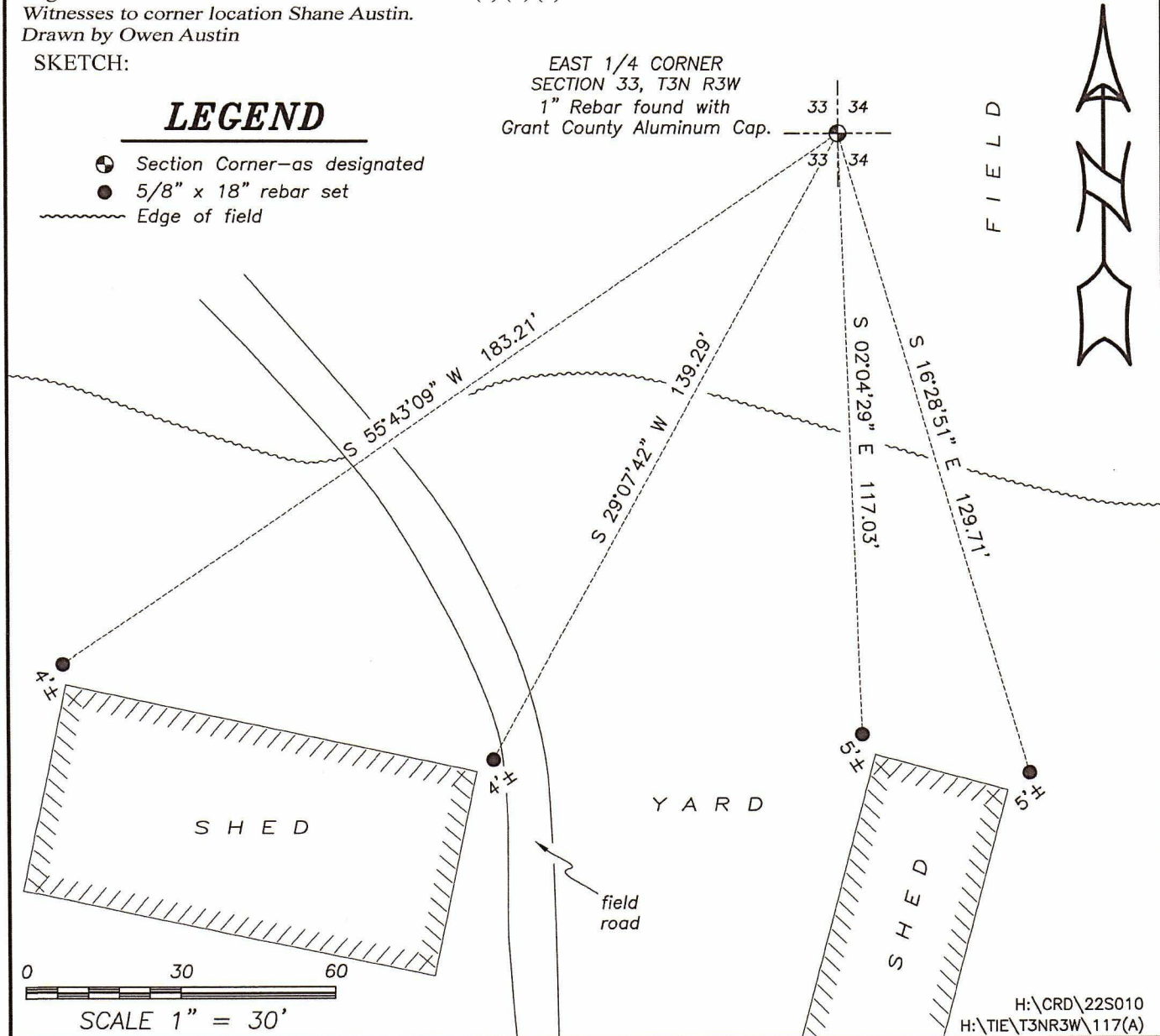
Witnesses to corner location Shane Austin.
Drawn by Owen Austin

SKETCH:

LEGEND

- ⊕ Section Corner—as designated
- 5/8" x 18" rebar set
- ~~~~~ Edge of field

EAST 1/4 CORNER
SECTION 33, T3N R3W
1" Rebar found with
Grant County Aluminum Cap.

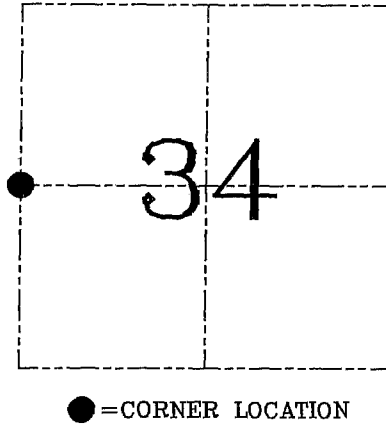
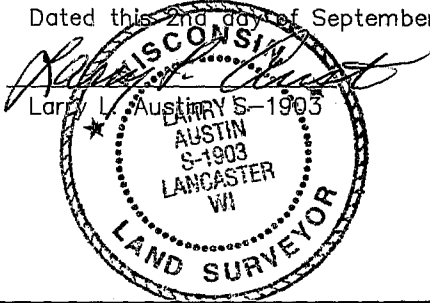


U.S. PUBLIC LAND SURVEY MONUMENT RECORD – GRANT COUNTY, WI
Section 34, Town 3 North Range 3 West, Town of Potosi

CERTIFICATE

I, Larry L. Austin, do hereby certify that the corner location on this record was determined by me and/or under my direct supervision and that this U.S. public land survey monument record is correct and complete to the best of my knowledge and belief.

Dated this 2nd day of September, 2003



HISTORY OF CORNER ESTABLISHMENT

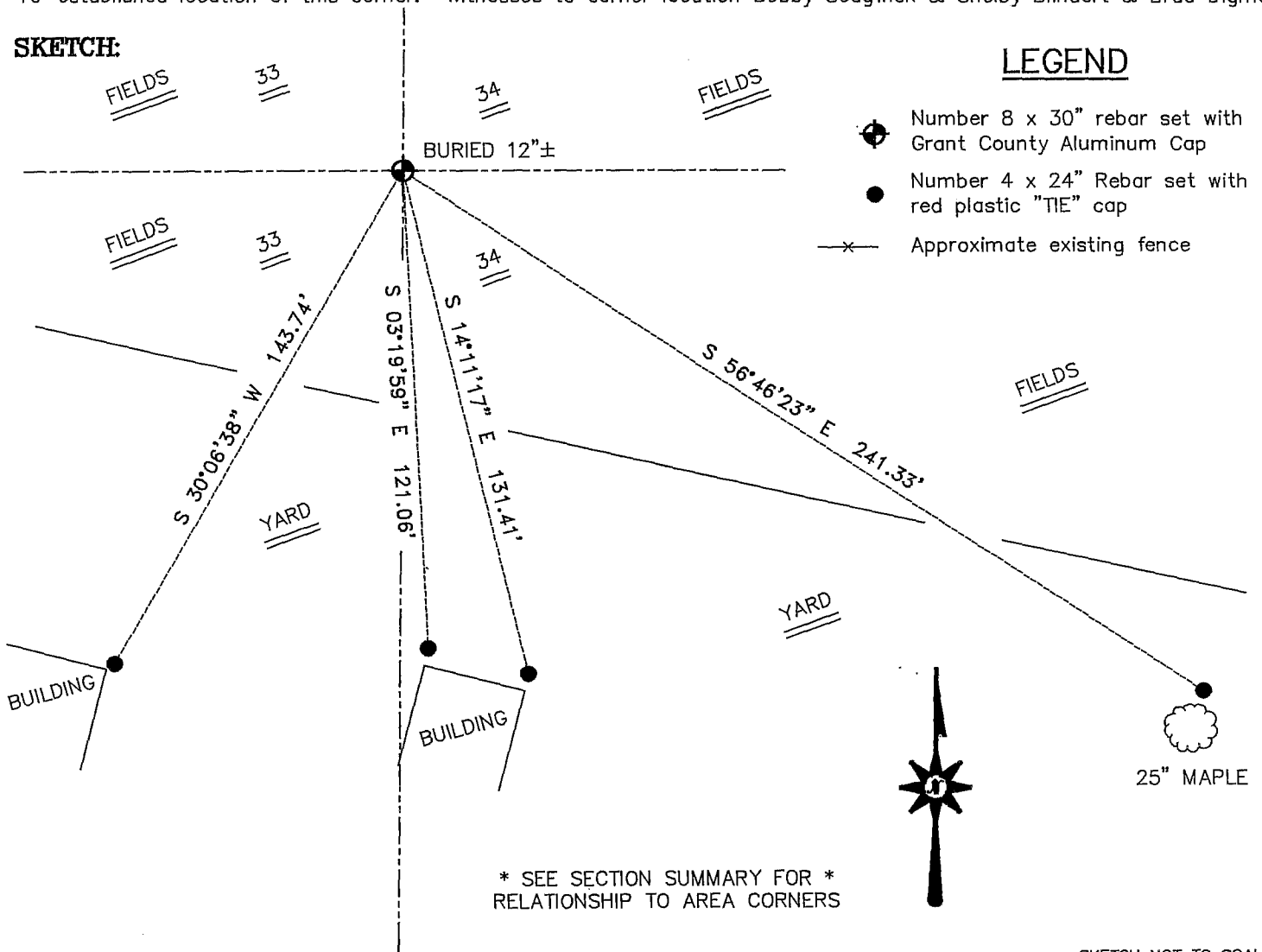
Corner was originally set in 1833 by Clark. In 1845 Wiltse tied to the corner while platting the Village of Potosi. No other record of the corner was found.

DESCRIPTION OF CORNER EVIDENCE FOUND

I reset the corner proportionately between the Northwest and Southwest corners of Section 34. Verified this location using EDM & GPS methods.

DESCRIPTION OF CORNER AND WITNESS MONUMENTS, references and accessories used to perpetuate the original or re-established location of this corner. Witnesses to corner location Bobby Sedgwick & Shelby Blindert & Brad Digman

SKETCH:



AUSTIN ENGINEERING, LLC
 4211 HWY 81 EAST, LANCASTER, WI 53813
 PHONE 608-723-6363 FAX 608-723-6702

FIELDBOOK: TDS RNGR, 2103
 G: \T3NR3W\34GCC
 H: \TIE\T3NR3W\117
 JOB NUMBER 03S134

DRAWN BY: SW AUSTIN
 APPROVED: LL AUSTIN

CORNER NUMBER 117