

GRANT COUNTY CERTIFIED LAND CORNER

CORNER NUMBER 114

CERTIFICATE:

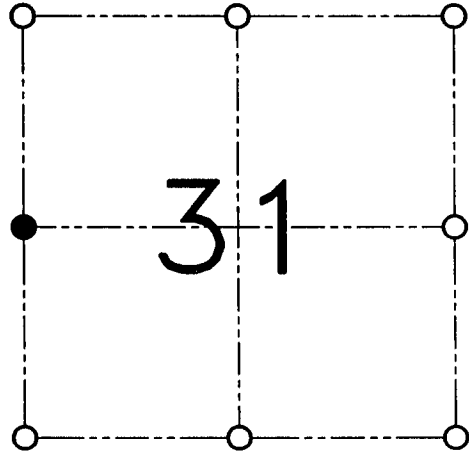
I, Larry L. Austin, do hereby certify that the corner location on this record was determined by me and/or under my direct supervision that this U.S. public land survey monument record is correct and complete to the best of my knowledge and belief.

Dated this 21st day of March, 2001

Larry L. Austin
Larry L. Austin, S-1903



SEAL



● = CORNER LOCATION

SECTION 31, T 3 N R 3 W
TOWN OF POTOSI

HISTORY OF ORIGINAL CORNER ESTABLISHMENT:

Corner was never originally set.
No other record of the corner was found.

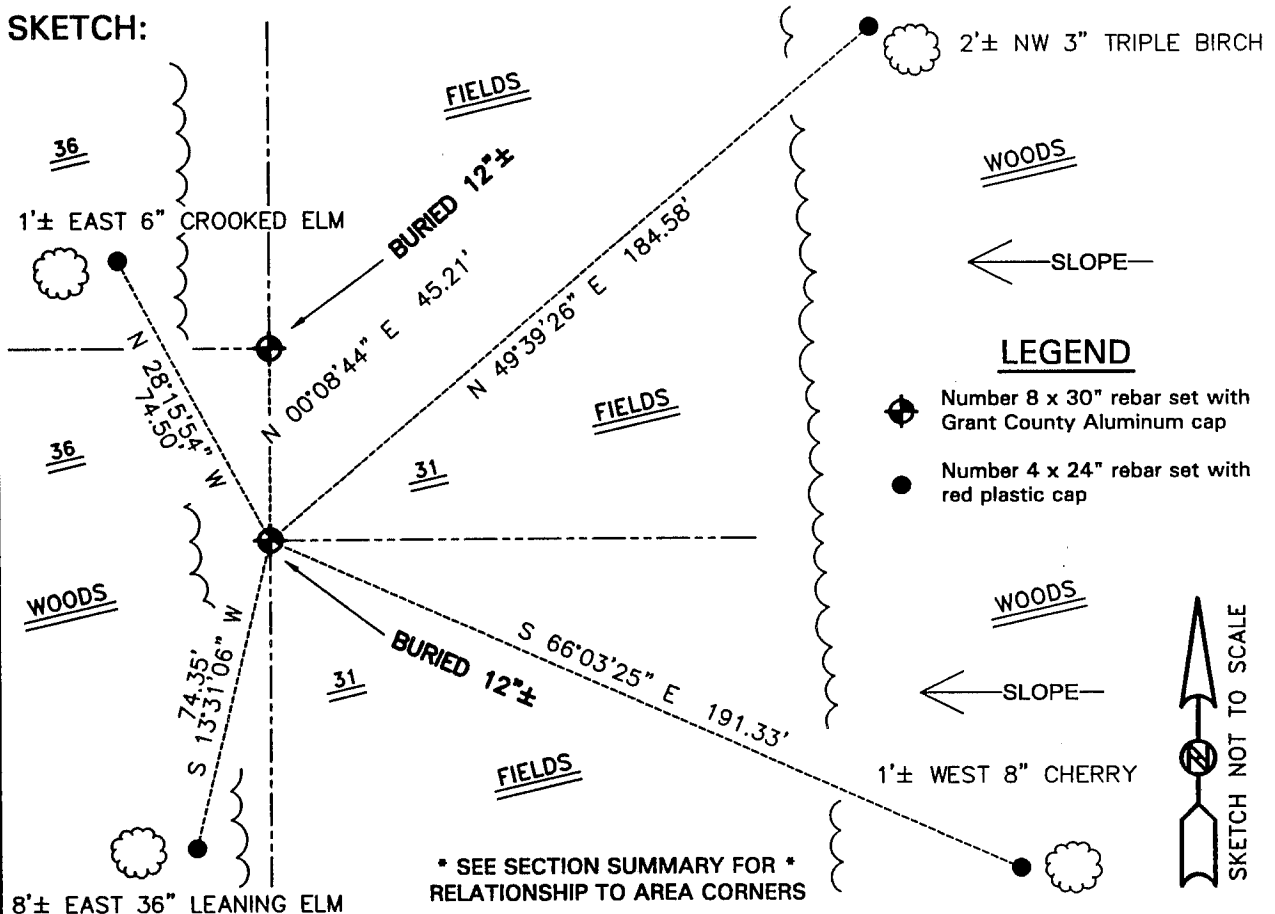
DESCRIPTION OF CORNER EVIDENCE FOUND:

I reset the corner at the proportioned offset from the East 1/4 corner of Section 36.
Verified this location using an EDM & GPS traverse of the area.

DESCRIPTION OF CORNER AND WITNESS MONUMENTS

references and accessories used to perpetuate the original or re-established location of this corner.

SKETCH:



AUSTIN ENGINEERING, LLC
4211 HWY 81 E, LANCASTER, WI 53813
PHONE 608-723-6363 FAX 608-723-6702

FIELDBOOK: SDR33, 2040
G:\T3NR3W\29
G:\SWA\TIE\T3NR3W\114

DRAWN BY: SW AUSTIN
APPROVED: LL AUSTIN
CREW: BS-SB-SA-TF
SHEET 1 OF 1