

# GRANT COUNTY CERTIFIED LAND CORNER

CORNER NUMBER 113

**CERTIFICATE:**

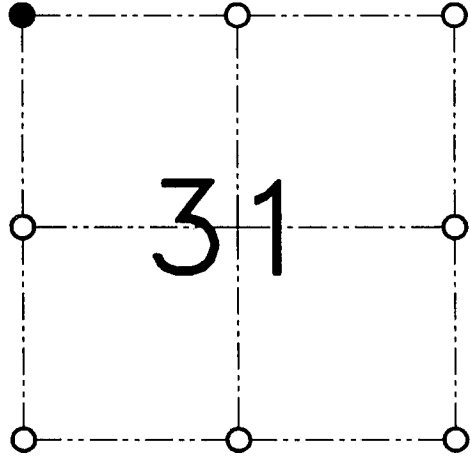
I, Larry L. Austin, do hereby certify that the corner location on this record was determined by me and/or under my direct supervision that this U.S. public land survey monument record is correct and complete to the best of my knowledge and belief.

Dated this 21st day of March, 2001

*Larry L. Austin*  
Larry L. Austin, S-1903



SEAL



● = CORNER LOCATION

SECTION 31, T 3 N R 3 W  
TOWN OF POTOSI

**HISTORY OF ORIGINAL CORNER ESTABLISHMENT:**

Corner was originally set in 1833 by Lucius Lyon. In 1997 Mike Larosa set a 1" Iron pipe but not at the exact location due to inaccessibility at the time of the survey.

**DESCRIPTION OF CORNER EVIDENCE FOUND:**

I found the 1" Iron pipe set by Larosa. I set the corner at the true location online between the Northeast and Southeast corners of Section 36 and at the recorded offset. Verified this location using EDM & GPS methods.

**DESCRIPTION OF CORNER AND WITNESS MONUMENTS**

references and accessories used to perpetuate the original or re-established location of this corner.

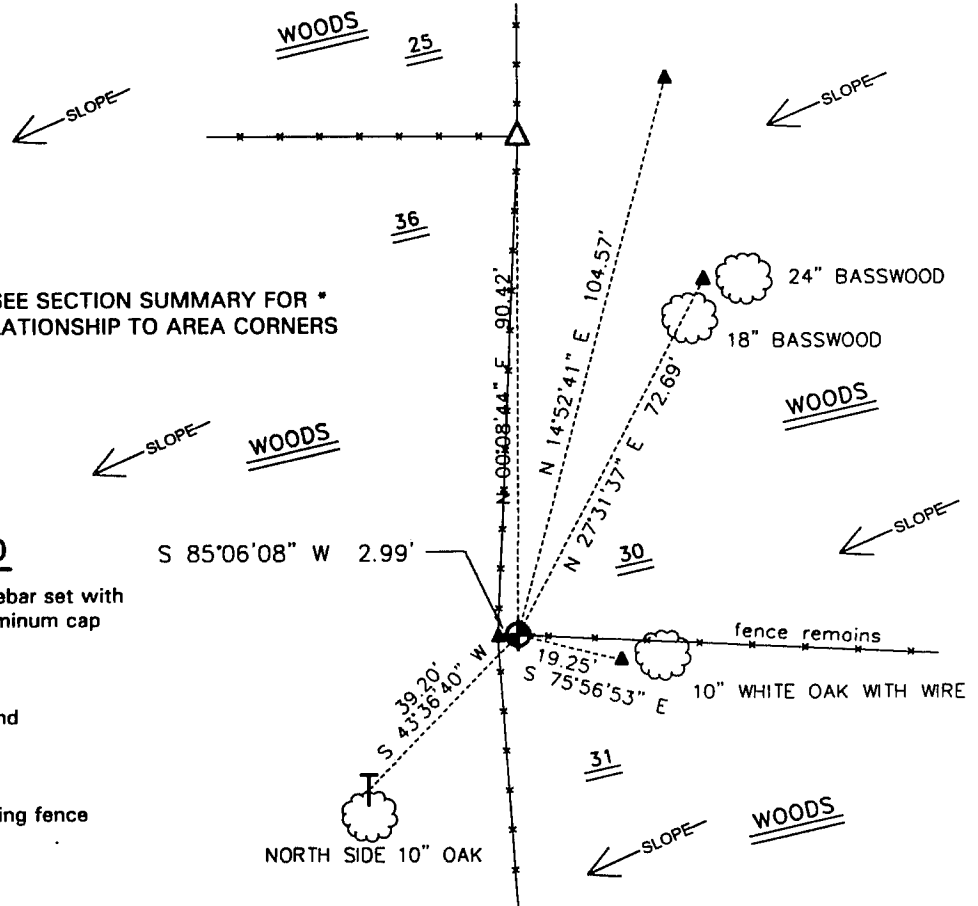
**SKETCH:**



\* SEE SECTION SUMMARY FOR \*  
RELATIONSHIP TO AREA CORNERS

**LEGEND**

- Number 8 x 30" rebar set with Grant County Aluminum cap
- △ 1" Iron pipe found
- ▲ 1/2" Iron pipe found
- ⊕ 60 penny nail set
- Approximate existing fence



**AUSTIN ENGINEERING, LLC**  
4211 HWY 81 E, LANCASTER, WI 53813  
PHONE 608-723-6363 FAX 608-723-6702

FIELDBOOK: SDR33, 2040  
G:\T3NR3W\29  
G:\SWA\TIE\T3NR3W\113

DRAWN BY: SW AUSTIN  
APPROVED: LL AUSTIN  
CREW: BS-SB-SA-TF  
SHEET 1 OF 1