

GRANT COUNTY CERTIFIED LAND CORNER

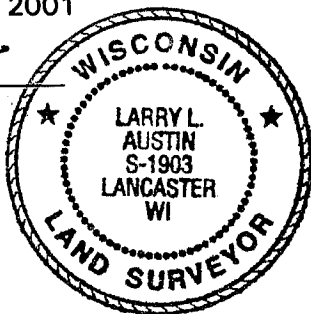
CORNER NUMBER 112

CERTIFICATE:

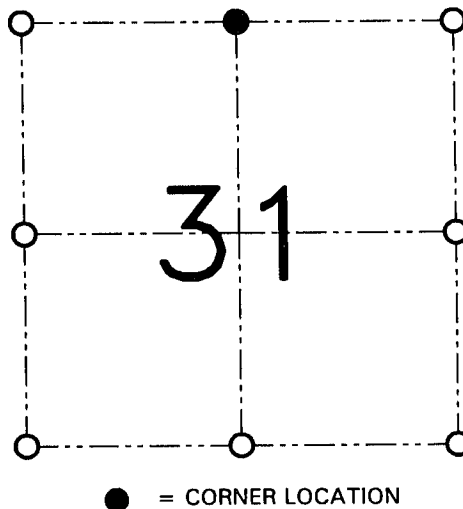
I, Larry L. Austin, do hereby certify that the corner location on this record was determined by me and/or under my direct supervision that this U.S. public land survey monument record is correct and complete to the best of my knowledge and belief.

Dated this 21st day of March, 2001

Larry L. Austin
Larry L. Austin, S-1903



SEAL



SECTION 31, T 3 N R 3 W
TOWN OF POTOSI

HISTORY OF ORIGINAL CORNER ESTABLISHMENT:

Corner was set in 1833 by Lucius Lyon.
In 1998 Thomas Buck set a #6 Iron bar at this location.

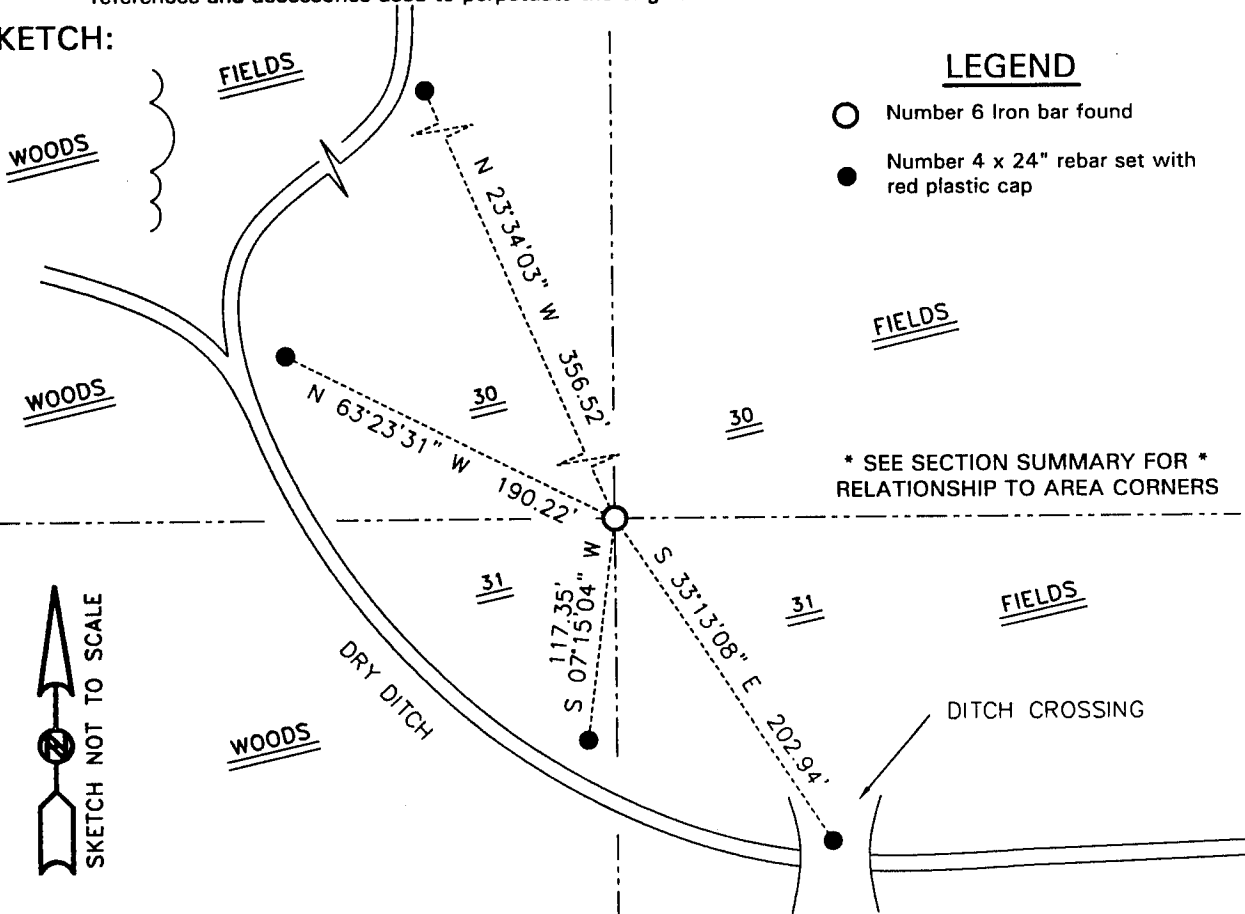
DESCRIPTION OF CORNER EVIDENCE FOUND:

I found the existing #6 iron bar and accepted it's location after an EDM & GPS traverse of the area.

DESCRIPTION OF CORNER AND WITNESS MONUMENTS

references and accessories used to perpetuate the original or re-established location of this corner.

SKETCH:



LEGEND

- Number 6 Iron bar found
- Number 4 x 24" rebar set with red plastic cap

* SEE SECTION SUMMARY FOR *
RELATIONSHIP TO AREA CORNERS



AUSTIN ENGINEERING, LLC
4211 HWY 81 E, LANCASTER, WI 53813
PHONE 608-723-6363 FAX 608-723-6702

FIELDBOOK: SDR33, 2040
G:\T3NR3W\29
G:\SWA\TIE\T3NR3W\112

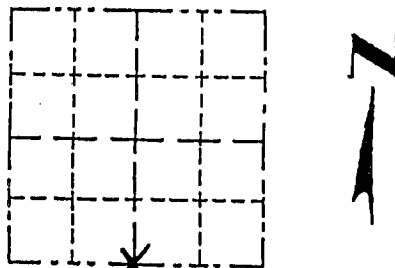
DRAWN BY: SW AUSTIN
APPROVED: LL AUSTIN
CREW: BS-SB-SA-TF
SHEET 1 OF 1

REC'D SEP 4 1998

Survey Monument Record

TYPE OF MONUMENT 3/4" X 24" IRON ROD
STATE PLANE COORDINATES: N _____
E _____
ELEVATION - M.S.L. DATUM: _____
THETA ANGLE: _____
FIELD BOOK: _____
PAGE _____

CORNER NO. _____
SECTION 30
TOWN 3 NORTH
RANGE 3 WEST

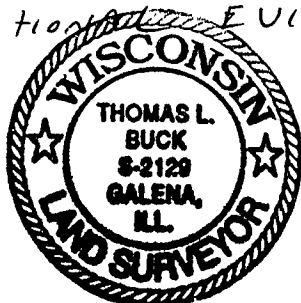


LOCATION
(Indicated by "X")
 FOUND PERPETUATED LOCATION
 OBLITERATED EVIDENCE LOCATION
 LOST CORNER (RESTORED BY PROPORTIONATE METHODS)

BASIS FOR MONUMENT LOCATION

(Use reverse side if necessary)
Show info such as: History of corner, with reference to Vol. and pg., dates, surveyor; exact description of monument replaced; if location computed, by taped or EDM traverse; landowner, remarks, etc.

I FOUND NO EVIDENCE AT THIS CORNER AND NO HISTORY SINCE THE ORIGINAL GOVERNMENT SURVEY. I PLACED THIS MONUMENT 24" DEEP IN A CORN FIELD AFTER G.P.S. OBSERVATIONS AND A E.D.M. TRAVERSE OF SECTION 30 AND THE SOUTH 1/2 OF SECTION 29. THE MONUMENT FITS WELL WITH OTHER MONUMENTS AND OCCUPATIONAL EVIDENCE WITHIN SECTION 30.



CERTIFIED CORRECT TO THE BEST OF MY KNOWLEDGE AND BELIEF

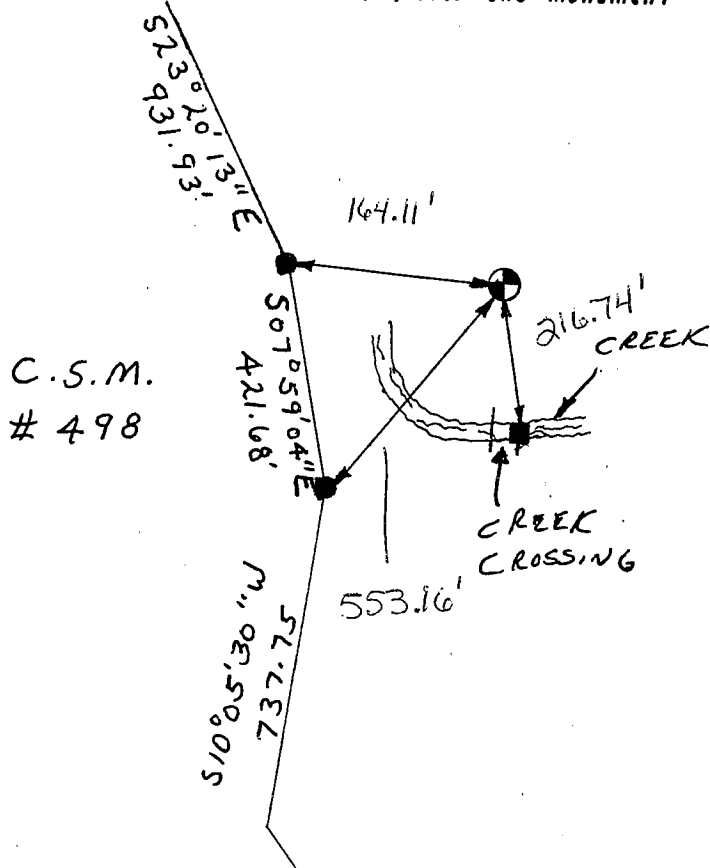
Thomas Buck

Registered Land Surveyor

DATE: 8/27/98

TIE SKETCH

Show at least three (3) ties and monument



C.S.M.
498

No SCALE

LEGEND

- ⊕ = 3/4" X 24" IRON ROD SET FOR SECTION CORNER
- = 3/4" X 24" IRON ROD SET FOR LOT CORNER
- = P.K. NAIL w/SHINER SET ON TOP OF WOOD POST