

GRANT COUNTY CERTIFIED LAND CORNER

CORNER NUMBER 111

CERTIFICATE:

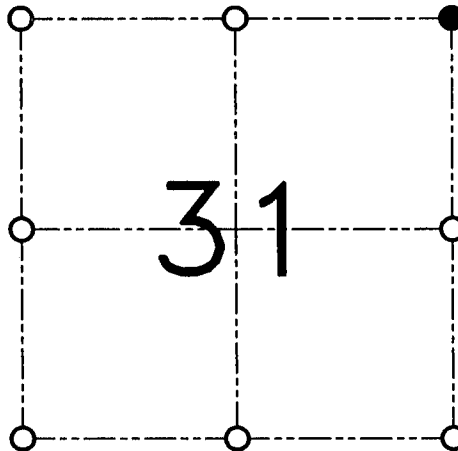
I, Larry L. Austin, do hereby certify that the corner location on this record was determined by me and/or under my direct supervision that this U.S. public land survey monument record is correct and complete to the best of my knowledge and belief.

Dated this 21st day of March, 2001

Larry L. Austin
Larry L. Austin, S-1903



SEAL



● = CORNER LOCATION

SECTION 31, T 3 N R 3 W
TOWN OF POTOSI

HISTORY OF ORIGINAL CORNER ESTABLISHMENT:

Corner was set in 1833 by Lucius Lyon.
No other record of the corner was found.

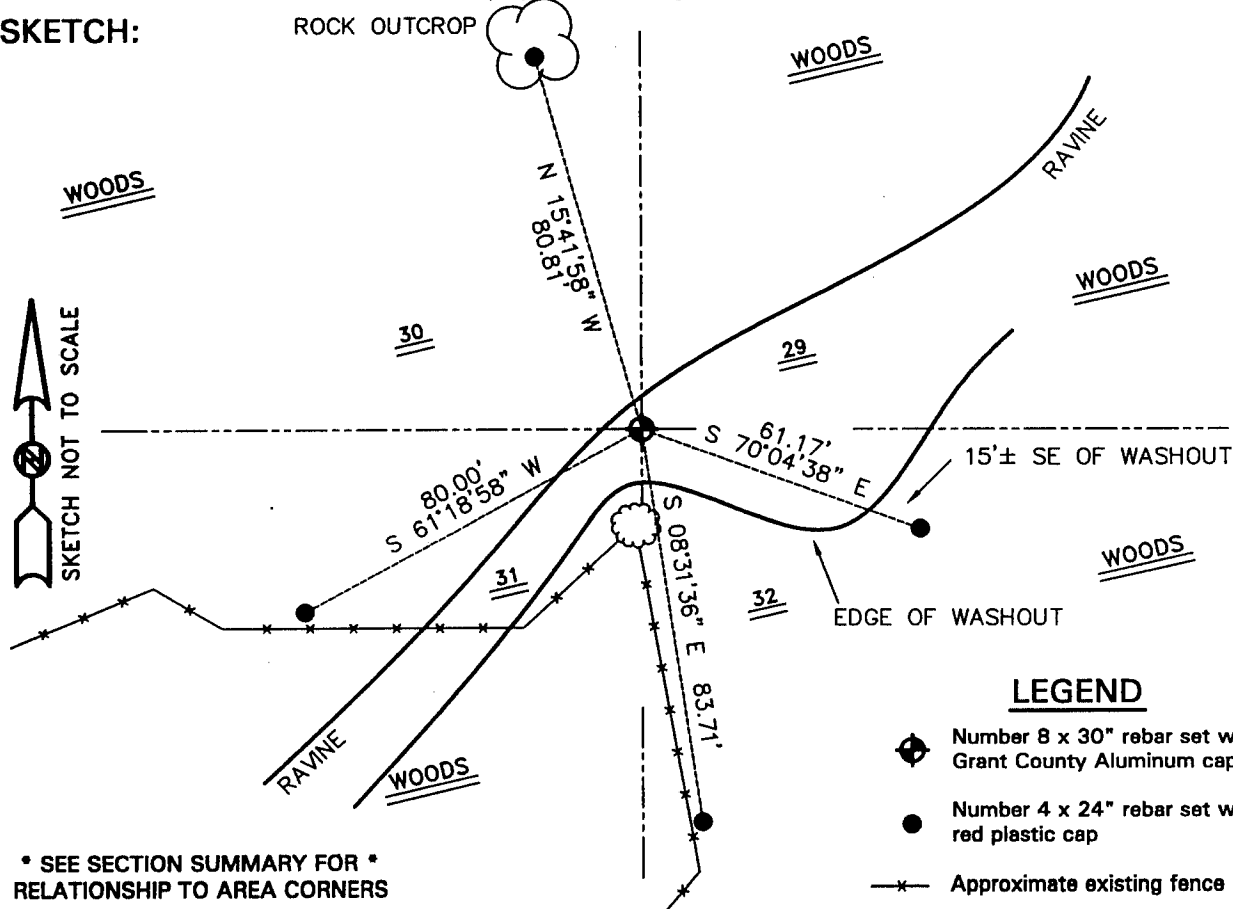
DESCRIPTION OF CORNER EVIDENCE FOUND:

Corner was set proportionately along the East line of the
Northeast 1/4. Verified this location using EDM & GPS methods.

DESCRIPTION OF CORNER AND WITNESS MONUMENTS

references and accessories used to perpetuate the original or re-established location of this corner.

SKETCH:



LEGEND

- Number 8 x 30" rebar set with Grant County Aluminum cap
- Number 4 x 24" rebar set with red plastic cap
- *— Approximate existing fence

* SEE SECTION SUMMARY FOR *
RELATIONSHIP TO AREA CORNERS

AUSTIN ENGINEERING, LLC
4211 HWY 81 E, LANCASTER, WI 53813
PHONE 608-723-6363 FAX 608-723-6702

FIELDBOOK: SDR33, 2040
G:\T3NR3W\29
G:\SWA\TIE\T3NR3W\111

DRAWN BY: SW AUSTIN
APPROVED: LL AUSTIN
CREW: BS-SB-SA-TF
SHEET 1 OF 1