

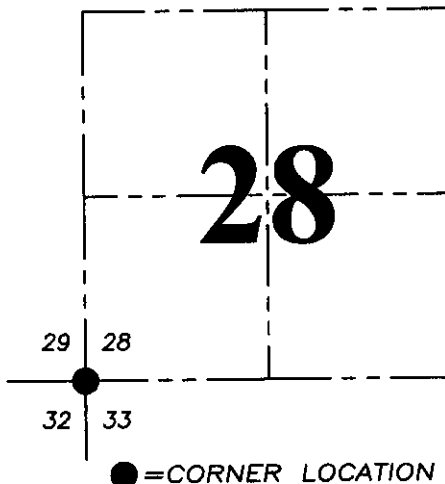
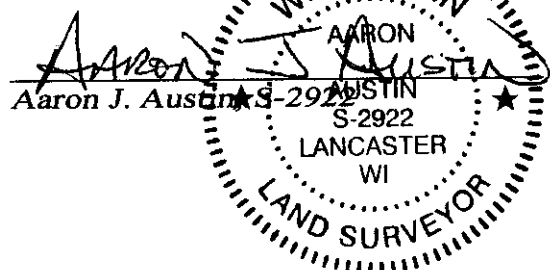
U.S. PUBLIC LAND SURVEY MONUMENT RECORD - GRANT COUNTY, WI

Section 28, Town 3 North Range 3 West, Town of Potosi

CERTIFICATE:

I, Aaron J. Austin, Wisconsin Professional Land Surveyor, do hereby certify that the corner location on this record was determined by me and/or under my direct supervision and that this U.S. Public Land Survey Monument Record is correct and complete to the best of my knowledge and belief.

Dated this 30th day of NOVEMBER, 2015.



HISTORY OF CORNER ESTABLISHMENT:

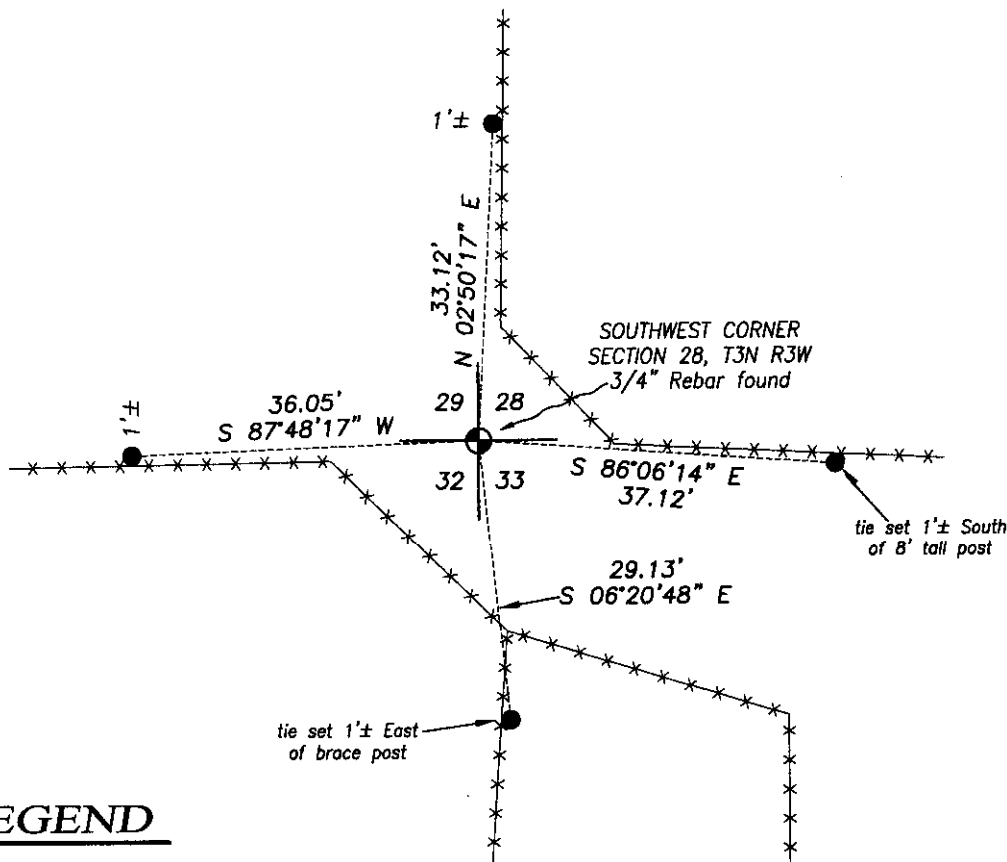
1833 Robert Clark set original corner.
 1850- George Struntz tied to the corner on a Survey in Book B, Page 194.
 1850-George Struntz tied to the corner on a Survey in Book B, Page 195.
 1991-Sean Walsh reset the corner and filed a Government Corner Record for this corner on a Survey filed in Book P, Page 123.
 Several recent surveys have used Walsh's corner location.

DESCRIPTION OF CORNER EVIDENCE FOUND:

I found and accepted a 3/4" rebar set by Sean Walsh. I was not able to recover the Witness Corners set by Walsh. I reset four new Witness Corners as shown hereon. This corner was verified by E.D.M. and G.P.S. methods.

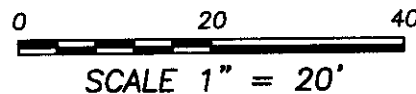
DESCRIPTION OF CORNER AND WITNESS MONUMENTS, references and accessories used to perpetuate the original or re-established location of this corner. Witnesses to corner location Shane Austin.

SKETCH:



LEGEND

- ⊙ Section Corner--as designated
- Number 4 x 12" Rebar set with red plastic "TIE" cap
- x-x- Existing Fence



4211 HWY 81 E, LANCASTER, WI 53813
 PHONE: 608-723-6363 FAX: 608-723-6702

JOB NO: 15s037
 H:\CRD\15s037
 H:\TIE\T3NR3W\109

FIELDBOOK: TDSR
 DRAWN BY: AJ AUSTIN
 CREW: SW AUSTIN

JUL 1 2016

GOVERNMENT CORNER RECORD

SOUTHEAST CORNER, SECTION 29, TOWNSHIP 3 NORTH, RANGE 3 EAST - WEST,

TOWN, ~~CITY OR VILLAGE~~ OF POTOSI

TYPE OF MONUMENT: 3/4" X 24" IRON ROD PLACED ELEVATION - M.S.L. DATUM

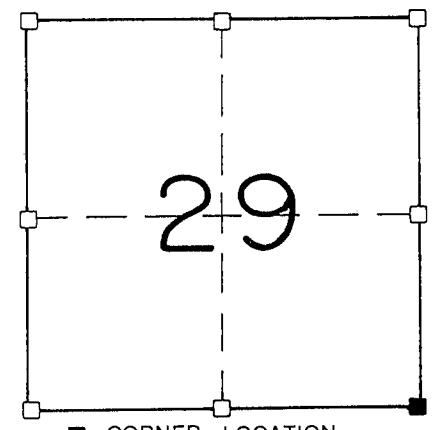
WITNESSES TO CORNER LOCATION

SEAN M. WALSH

PATRICK J. DEDERICH

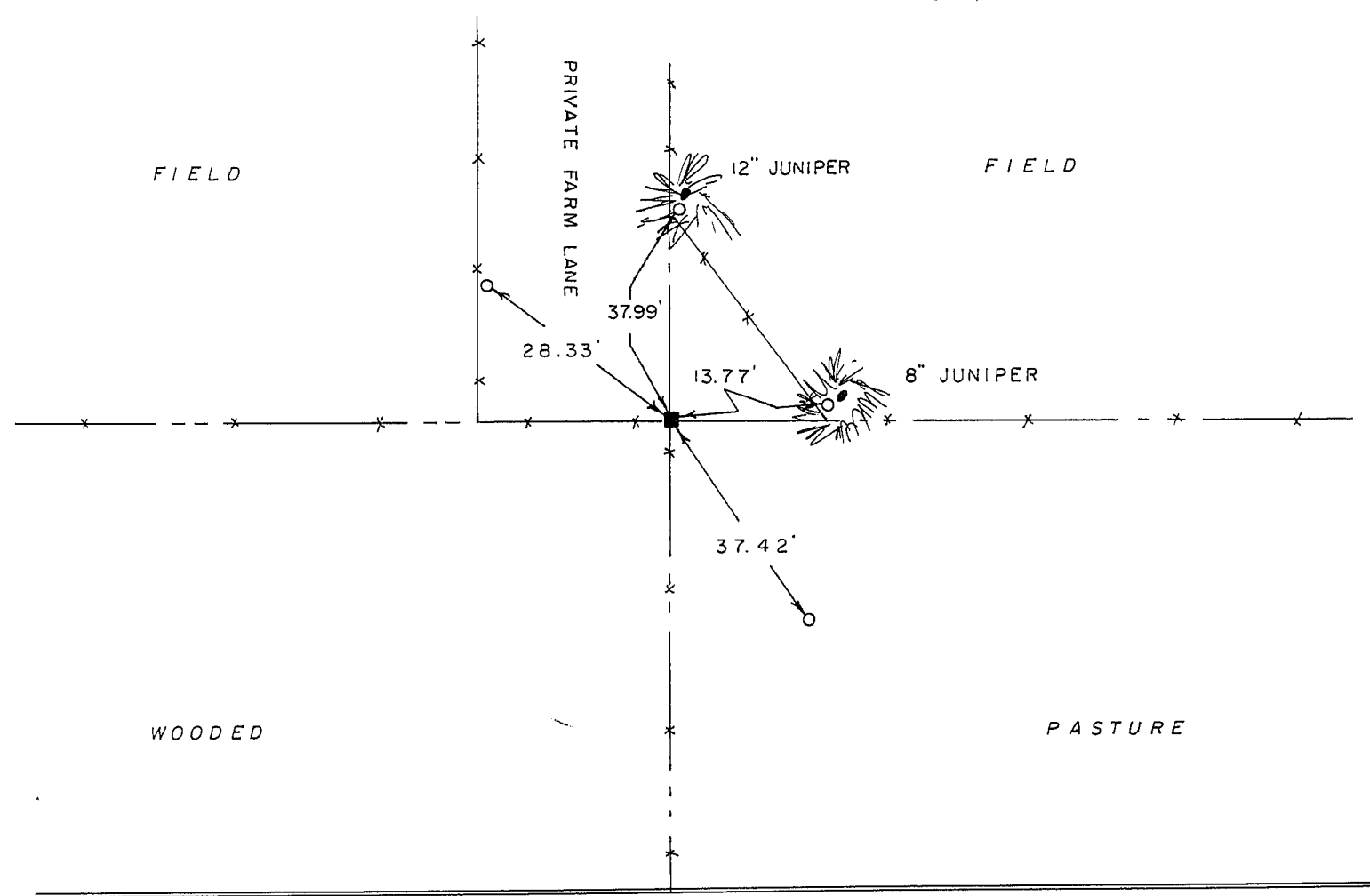
SECTION 29, T 3 N, R 3 #W

TOWN OF POTOSI



NORTH

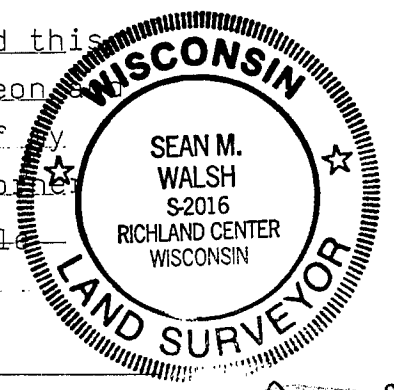
TIE SKETCH
(SHOW ALL HELPFUL FEATURES)



SURVEYOR'S CERTIFICATE

SEAL S. 2016

Sean M. Walsh, DO HEREBY CERTIFY THAT I have established this corner in accordance with the information contained hereon that this information is correct and true to the best of my information, knowledge and belief. I established this corner at the occupied location as there was no other acceptable evidence available. I found a 3/4" iron rod (over)



SET THIS 14TH DAY OF JUNE, 19 91

Sean M. Walsh
REGISTERED LAND SURVEYOR

P109A

approximately 26 feet west near the corner of the lane fence and the East/West fence shown on the sketch, the iron had been disturbed and was laying on its side partially exposed: The occupied location which I used fits very well with other occupied and monumented corners within section 29 and the surrounding area