

GRANT COUNTY CERTIFIED LAND CORNER

CORNER NO. 105

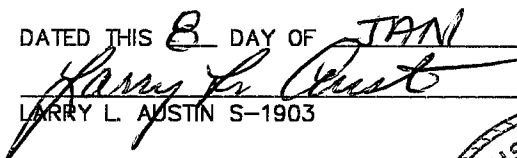
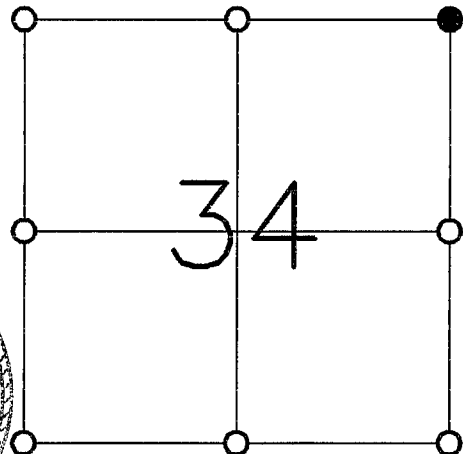
T 3 N R 3 W
TOWN OF POTOSI

CERTIFICATE:

I, LARRY L. AUSTIN, DO HEREBY CERTIFY THAT ON 12 DAY OF DECEMBER, 1998, I FOUND EVIDENCE OF THE SOUTHWEST CORNER OF SECTION 34, TOWN 3 NORTH, RANGE 3 WEST, OF THE FOURTH PRINCIPAL MERIDIAN, AND I RE-ESTABLISHED SAID CORNER ACCORDING TO THE WISCONSIN STATUTES AS SHOWN AND DESCRIBED HEREON.

DATED THIS 8 DAY OF JAN ~~1998~~ ¹⁹⁹⁹

LARRY L. AUSTIN S-1903

● = CORNER LOCATION

HISTORY OF ORIGINAL CORNER ESTABLISHMENT:

CORNER SET ORIGINALLY IN 1833 BY ROBERT CLARK. CORNER SET IN 1980 BY DAVE DAVIS AND NO MONUMENT WAS FOUND. CORNER WAS SET IN 1988 BY D.O.T. (TIMOTHY JAMES) CAST ALUMINUM MONUMENT WAS FOUND.

DESCRIPTION OF CORNER EVIDENCE FOUND:

I SET THE CORNER BASED ON THE ORIGINAL DISTANCE ON THE SUBDIVISION OF SECTION 34 ON THE EAST LINE OF THE NORTHEAST 1/4. THIS LOCATION FIT LOCAL EVIDENCE. (STREETS, LOTS, ECT.) VERIFIED THIS LOCATION USING E.D.M. AND G.P.S. METHODS.

DESCRIPTION OF CORNER AND WITNESS MONUMENTS, REFERENCES AND ACCESSORIES USED TO PERPETUATE THE ORIGINAL OR RE-ESTABLISHED LOCATION OF THIS CORNER:

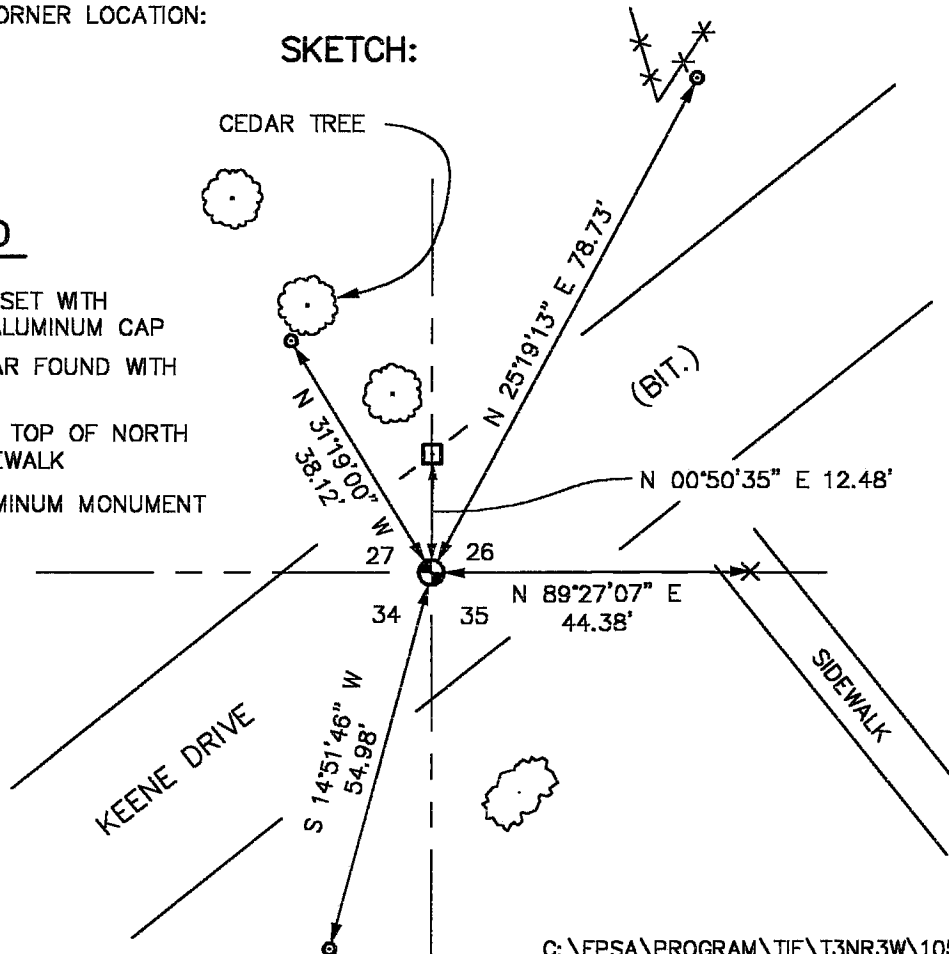
WITNESS TO THE CORNER LOCATION:

BOBBY SEDGWICK
SHELBY BLINDERT

SKETCH:

LEGEND

- 1" X 30" REBAR SET WITH GRANT COUNTY ALUMINUM CAP
- 3/4" X 24" REBAR FOUND WITH D.O.T. CAP
- × CHISELED "X" ON TOP OF NORTH END OF THE SIDEWALK
- D.O.T. CAST ALUMINUM MONUMENT FOUND



NOT TO SCALE

C:\EPSA\PROGRAM\TIE\T3NR3W\105

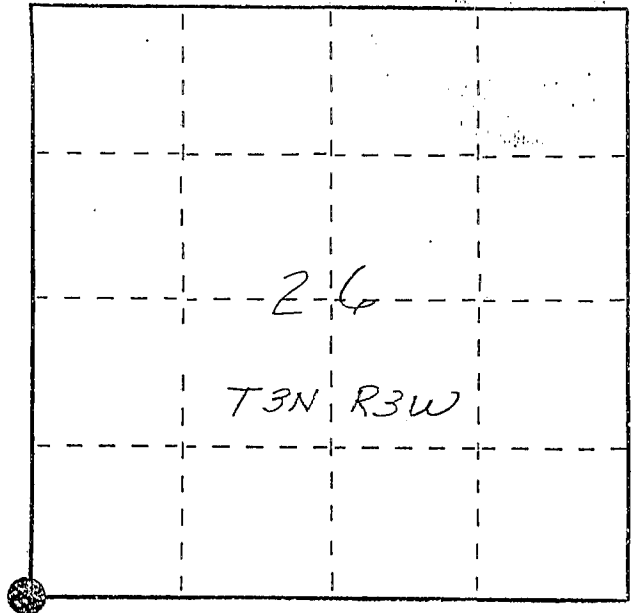
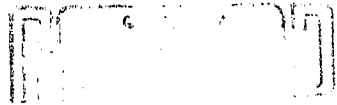
U. S. PUBLIC LAND SURVEY MONUMENT RECORD

INSTRUCTIONS: This record shall show the location of the corner and shall include all of the following nine elements (a through i).

(a) Identify the corner by reference to the U.S. public land survey system.

● = Corner monument restored.

SW corner section 26
T3N R3W of the
4th P.M.
Town of Potosi
Grant County, Wisconsin



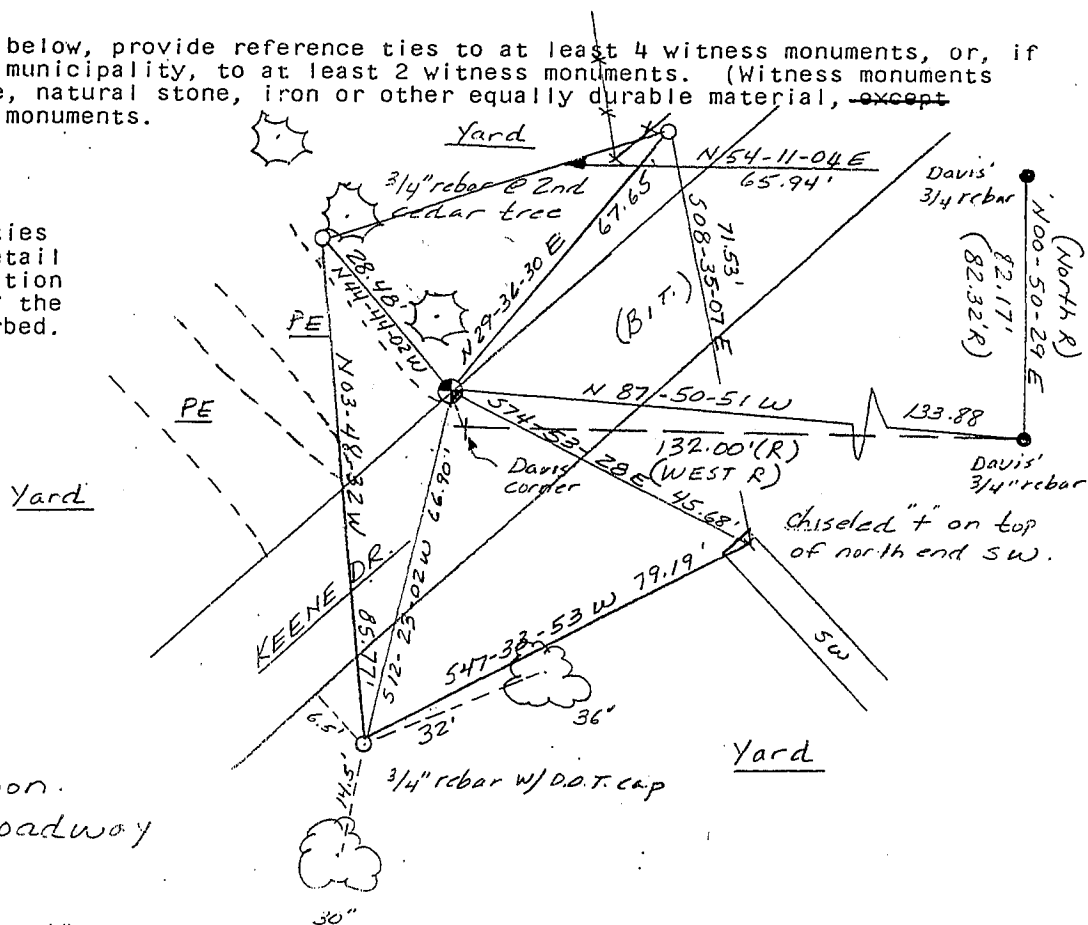
APR 27, 1988

(b) Describe any record evidence, monument evidence, occupational evidence, testimonial evidence or any other material evidence you considered, and whether the monument was found or placed.
Monument set as shown on Sedgwick's Green Acres Subdivision Plat. There is a discrepancy with a 1980 D. Davis survey but his intent was to hold what is recorded on Sedgwick's Green Acres Subdivision Plat as far as I can tell. No monument was found as mentioned in the above recorded surveys.

(c) In the plan view drawing below, provide reference ties to at least 4 witness monuments, or, if the location is within a municipality, to at least 2 witness monuments. (Witness monuments shall be made of concrete, natural stone, iron or other equally durable material, ~~except wood.~~) Describe witness monuments.

(d) Show a plan view drawing depicting the relevant monuments and reference ties which is sufficient in detail to enable accurate relocation of the corner monument if the corner monument is disturbed. Indicate north.

No Scale
Bearings - Wis Grid



- Berntsen A-1 mon. set just below roadway surface
- Ref. mon. - 3/4" x 24" rebar w/cap.

Davis' corner to monument set =
N 30-16-12 W 3.58'

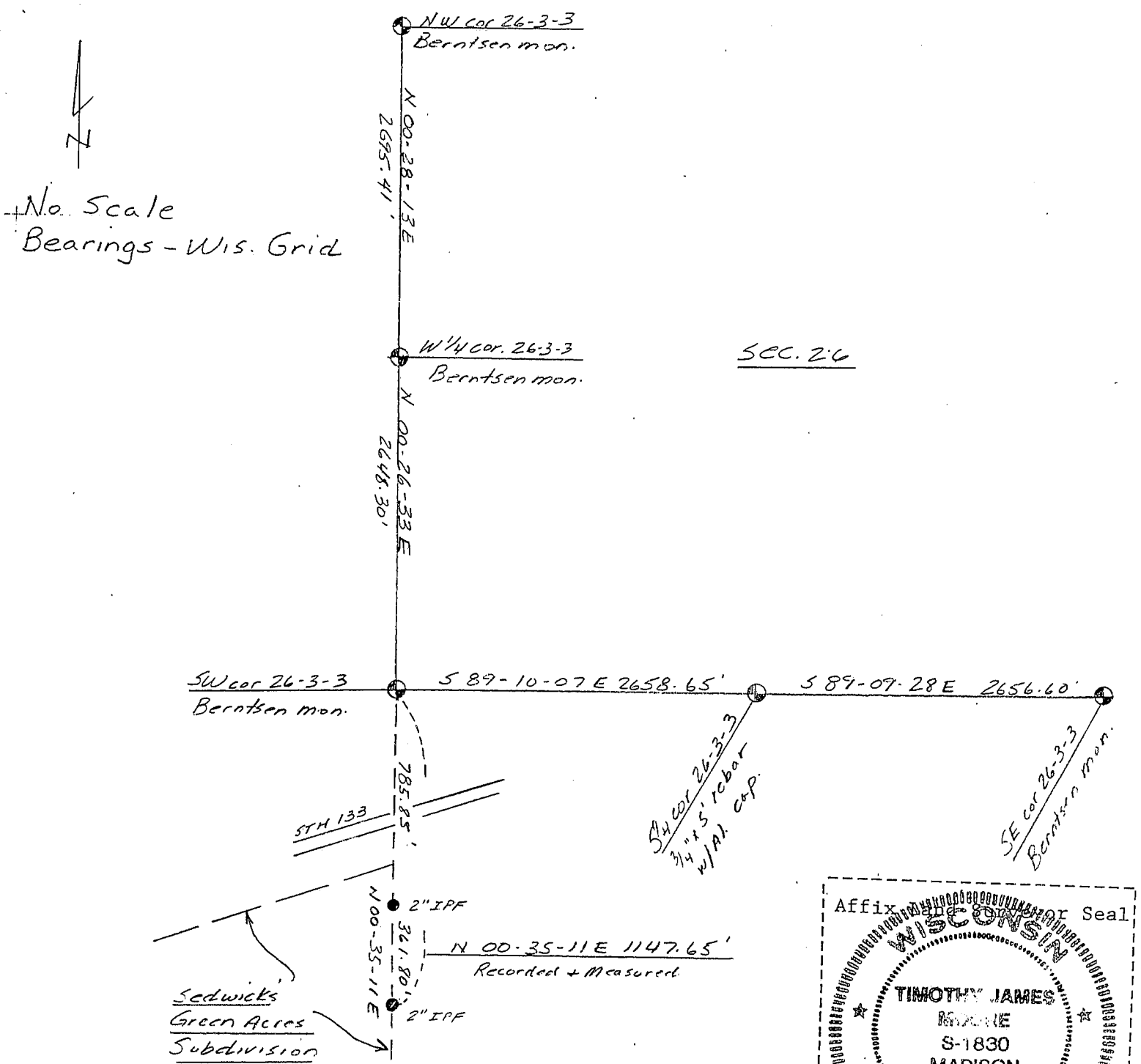
(e) Describe any material discrepancy between the location of the corner as restored or reestablished and the location of that corner as previously restored or reestablished by distance and direction. Show the discrepancy on the plan view drawing under (d), above. Show the distances between the corner as previously restored or reestablished and (1) the corner as restored or reestablished, and (2) to at least 2 of the witness monuments shown on the drawing in (d), above.

Dave Davis' survey monuments and Sedgwick's Green Acres Subdivision monuments were tied in. On Davis' survey he ties to Sedgwick's Subdivision and intended to use corner location as shown on Subdivision Plat. However, Davis' SW corner of section 26 falls Southeasterly of record location.

(f) Was the corner restored through acceptance of (1) an obliterated evidence location, or, (2) a found perpetuated location?

Corner location, as shown on Sedgwick's Green Acres Subdivision, was accepted and monumented.

(g&h) Was the corner reestablished through lost corner proportionate methods? If so, show the method, including the directions and distances to other public land survey corners used as evidence or used for proportioning in determining the corner location?



(i) I, Timothy J. Moore
 (type or print name) certify that the corner location shown on this record was determined by me or under my direction and control and that this U.S. Public Land Survey Monument Record is correct and complete to the best of my knowledge and belief.

Timothy J. Moore 70 3-8-88
 Signature Date