

33103

# U.S. PUBLIC LAND SURVEY MONUMENT RECORD - GRANT COUNTY, WI

Section 36, Town 3 North Range 3 West, Town of Potosi (a)

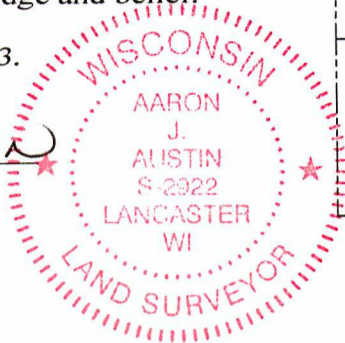
NOTE: This form is intended and designed to fulfill all requirements of the Wisconsin Administrative Code Chapter A-E 7.08, U.S. Public Land Survey Monument Record (3) (a) (b) (c) (d) (e) (f) (g) (h) (i).

**CERTIFICATE: (i)**

I, Aaron J. Austin, Wisconsin Professional Land Surveyor, do hereby certify that the corner location on this record was determined by me and/or under my direct supervision and that this U.S. Public Land Survey Monument Record is correct and complete to the best of my knowledge and belief.

Dated this 29th day of March, 2023.

*Aaron J. Austin*  
Aaron J. Austin, S-2922



● = CORNER LOCATION

Grant County Coordinates:  
NAD 83 (2011)  
Northing: 468,520.04  
Easting: 826,750.19

HISTORY OF CORNER ESTABLISHMENT:

Original corner was set in 1833 by Robert Clark.  
Douglas Malliet et a Railroad Spike and prepared a Survey Monument Recorded dated 4-24-1985.

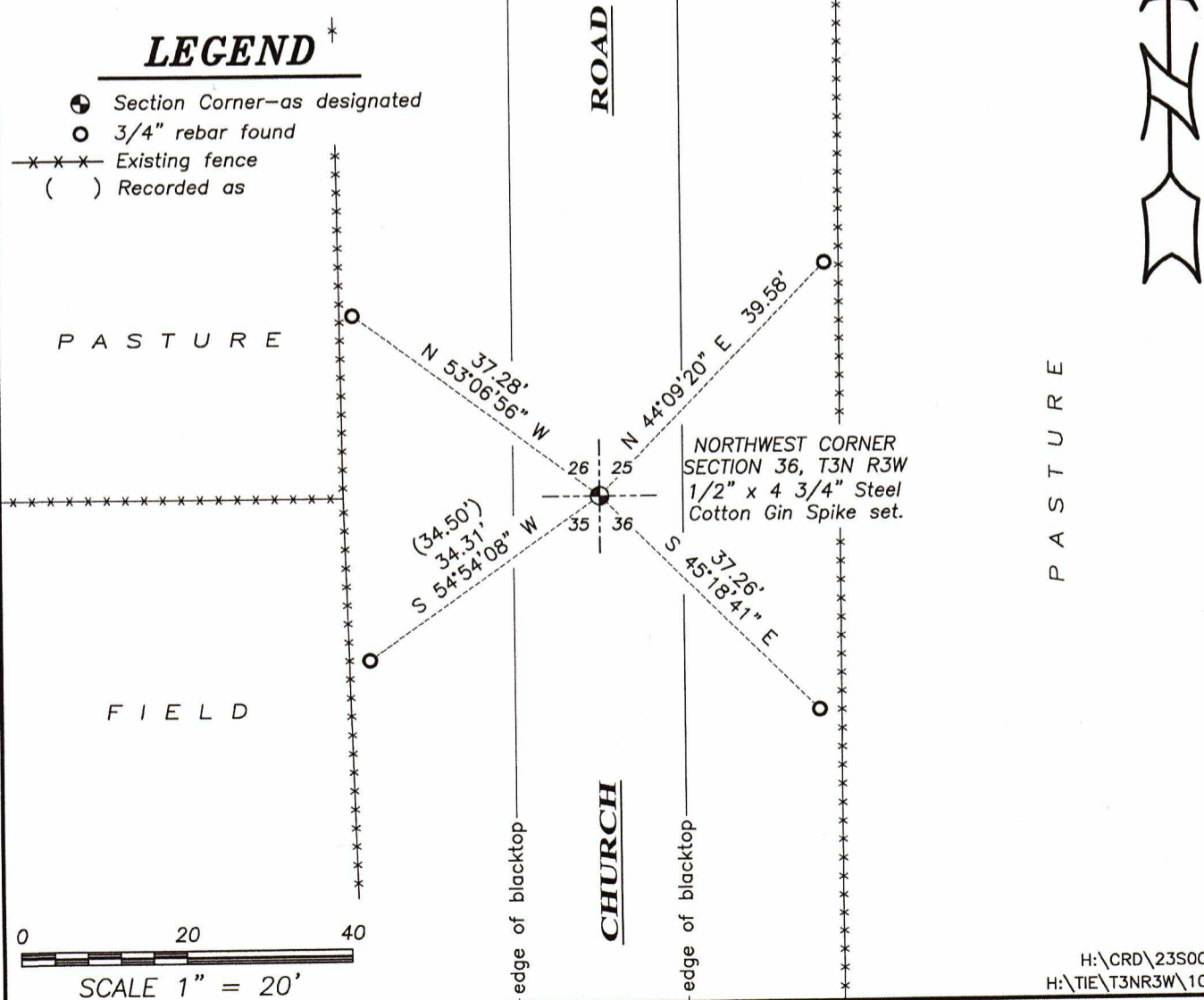
DESCRIPTION OF CORNER EVIDENCE FOUND: (b) (f) (g) (h)

I did not find the Railroad spike Malliet set. I found four witness corners and used them to set a 1/2" x 4 3/4" Cotton Gin Spike. I verified the Monument's location with G.P.S. and E.D.M. methods.

DESCRIPTION OF CORNER AND WITNESS MONUMENTS: references and accessories used to perpetuate the original or re-established location of this corner. (c) (d) (e)

Witnesses to corner location Owen Austin, Tanner Austin.  
Drawn by: Owen Austin.

SKETCH:



# U.S. PUBLIC LAND SURVEY MONUMENT RECORD

CORNER DESCRIPTION: SE CORNER, SECTION 26, T 3 N, R 3W

STATE PLANE COORDINATES: N \_\_\_\_\_, E \_\_\_\_\_

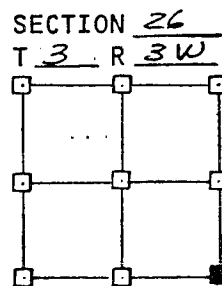
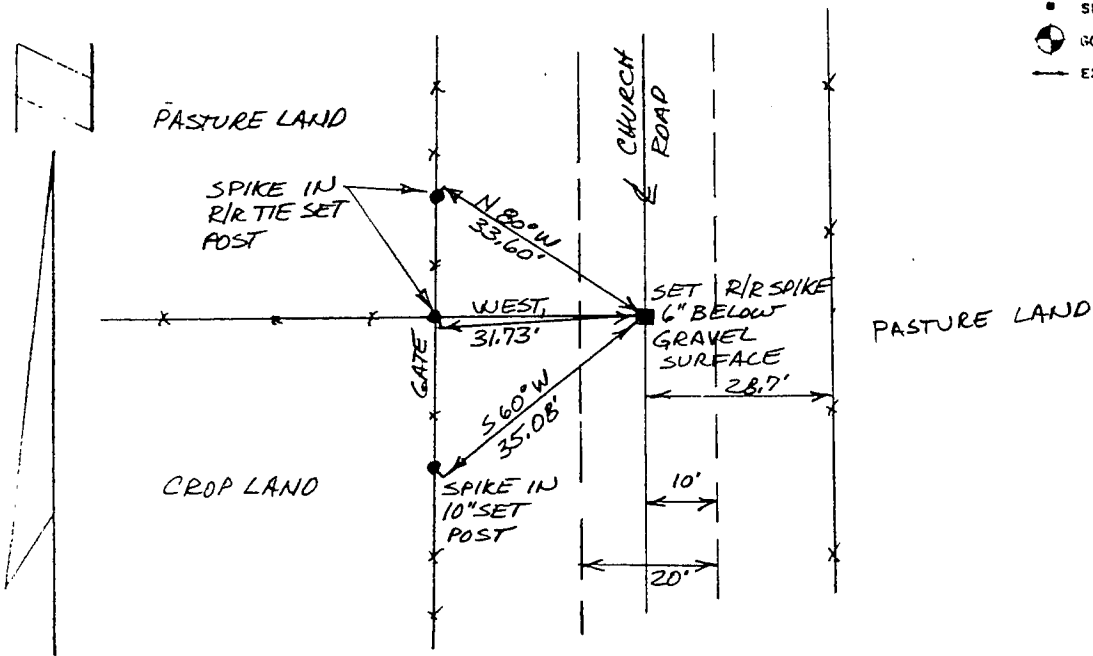
THETA ANGLE: \_\_\_\_\_

HORIZONTAL DATUM: WISCONSIN STATE PLANE COORDINATE SYSTEM, SOUTH ZONE

EVIDENCE: EXISTING TOWN ROAD AND FENCE TO THE WEST

MONUMENT: FOUND , PLACED   
 METHOD OF RESTORATION (RE-ESTABLISHMENT):  
 ACCEPTED EXISTING MONUMENT  
 ACCEPTED OCCUPATION  
 LOST CORNER PROPORTIONATE METHODS  
 DATE CORNER SET: 4/24/85

- LEGEND**
- ▲ SET #6 REBAR, 113 LBS PER LINEAL FT. MIN. WT.
  - SET 1" X 24" IRON PIPE, 113 LBS PER LINEAL FT. MIN. WT.
  - SET 2" X 30" IRON PIPE, 365 LBS. PER LINEAL FT. MIN. WT.
  - FOUND 1" IRON PIPE
  - FOUND 2" IRON PIPE
  - FOUND R/R SPIKE
  - SET R/R SPIKE
  - ⊙ GOVERNMENT CORNER
  - EXISTING FENCE

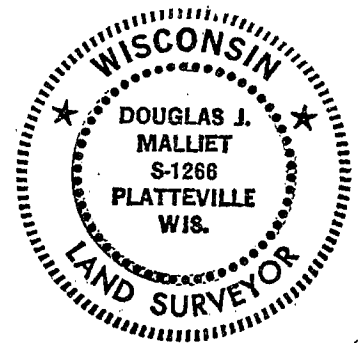


NOT TO SCALE THIS CONFORMS TO WISCONSIN ADMINISTRATIVE CODE A-E 5.02

SURVEYOR'S AFFIDAVIT:  
 STATE OF WISCONSIN)  
GRANT COUNTY) SS

I hereby certify that I, DOUGLAS J. MALLIET, have complied with the Wisconsin State Statutes, Statutes of the United States, and the rules and regulations made by the Secretary of the Interior the location of the corner shown above.

DATE OF SURVEY: 4/24/85  
Douglas J. Malliet  
 REGISTERED LAND SURVEYOR  
 # 1266



**D. F. BURBACH MUNICIPAL & CIVIL ENGINEERS**

410 NORTH SECOND STREET • PLATTEVILLE, WISCONSIN 53818 • (608) 348-3262

p. 103