

33102

U.S. PUBLIC LAND SURVEY MONUMENT RECORD - GRANT COUNTY, WI

Section 36, Town 3 North Range 3 West, Town of Potosi (a)

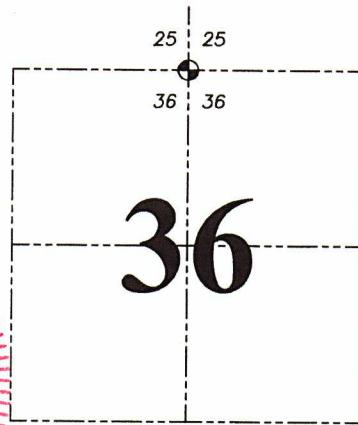
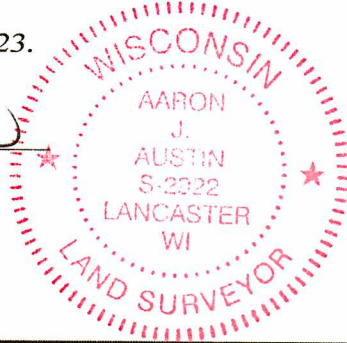
NOTE: This form is intended and designed to fulfill all requirements of the Wisconsin Administrative Code Chapter A-E 7.08, U.S. Public Land Survey Monument Record (3) (a) (b) (c) (d) (e) (f) (g) (h) (i).

CERTIFICATE: (i)

I, Aaron J. Austin, Wisconsin Professional Land Surveyor, do hereby certify that the corner location on this record was determined by me and/or under my direct supervision and that this U.S. Public Land Survey Monument Record is correct and complete to the best of my knowledge and belief.

Dated this 29th day of March, 2023.

Aaron J. Austin
Aaron J. Austin, S-2922



Grant County Coordinates:
NAD 83 (2011)
Northing: 468,529.47
Easting: 829,375.64

⊕ = CORNER LOCATION

HISTORY OF CORNER ESTABLISHMENT:

Original corner was set in 1833 by Robert Clark.
Larry Austin set a Grant County Aluminum Monument and prepared a Survey Monument Record dated 3-1-1996.

DESCRIPTION OF CORNER EVIDENCE FOUND: (b) (f) (g) (h)

I found the Aluminum Monument and three witness corners Larry set. I set one additional witness corner after I verified the Monument's location with G.P.S. and E.D.M. methods.

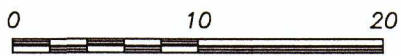
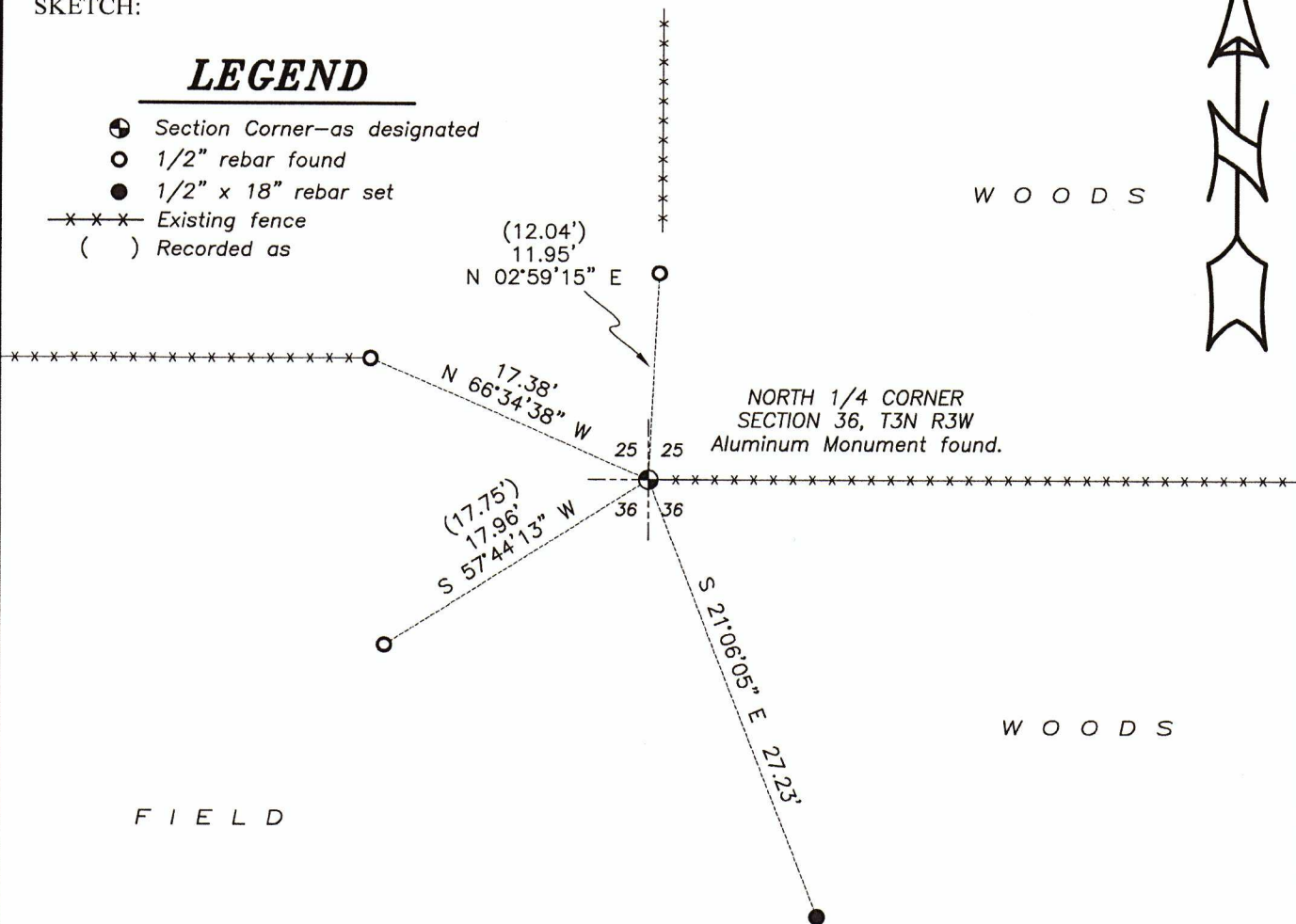
DESCRIPTION OF CORNER AND WITNESS MONUMENTS, references and accessories used to perpetuate the original or re-established location of this corner. (c) (d) (e)

Witnesses to corner location Owen Austin, Tanner Austin.
Drawn by: Owen Austin

SKETCH:

LEGEND

- ⊕ Section Corner—as designated
- 1/2" rebar found
- 1/2" x 18" rebar set
- x-x-x- Existing fence
- () Recorded as



SCALE 1" = 10'

Survey Monument Record

TYPE OF MONUMENT GRANT CO. Alum. Mon.

STATE PLANE COORDINATES: N _____
E _____

ELEVATION — M.S.L. DATUM: _____

THETA ANGLE: _____

FIELD BOOK: 9105

PAGE 18

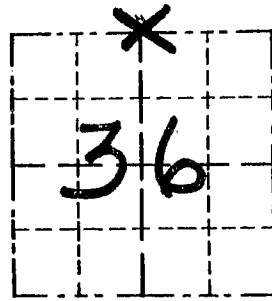
CORNER NO. 102

SECTION 36

TOWN 3N

RANGE 3W

N 1/4 COR



LOCATION
(Indicated by "X")

BASIS FOR MONUMENT LOCATION

(Use reverse side if necessary)

ORIGINAL CORNER SET
1833 BY ROBERT
CLARK; NO RECORD FOUND
OF CORNER SINCE ORIGINAL
SURVEY. A NORTH-SOUTH FENCE
WAS USED FOR E-W LOCATION
AND A FENCE RUNNING EAST
WAS ACCEPTED FOR N-S LOCATION.

SEAL:



ALUMINUM MONUMENT WAS PLACED
AFTER VERIFICATION BY EDM
TRAVERSE OF THE AREA.

CERTIFIED CORRECT

Larry L. Austin
Registered Land Surveyor

DATE: 3-1-96

TIE SKETCH

Show at least three (3) ties and monument

LEGEND

- ⊕ GRANT COUNTY ALUMINUM MONUMENT SET
- 3/8" x 12" IRON SPIKES SET FLUSH = TIES
- * * * EXISTING FENCE

