

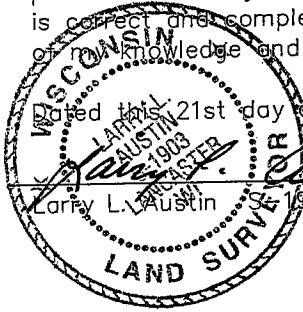
**U.S. PUBLIC LAND SURVEY MONUMENT RECORD – GRANT COUNTY, WI**

**Section 36, Town 3 North Range 3 West, Town of Potosi**

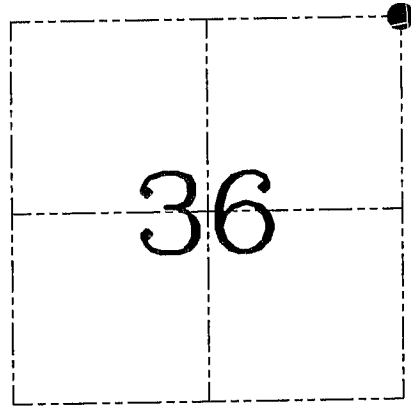
**CERTIFICATE**

I, Larry L. Austin, do hereby certify that the corner location on this record was determined by me and/or under my direct supervision and that this U.S. public land survey monument record is correct and complete to the best of my knowledge and belief.

Dated this 21st day of August, 2003



Larry L. Austin 2003



● = CORNER LOCATION

**HISTORY OF CORNER ESTABLISHMENT**

Corner was originally set in 1832 by Lyon. In 1869 Allen tied to the original corner. In 1875 Barber was at the corner. No other record of the corner was found.

**DESCRIPTION OF CORNER EVIDENCE FOUND**

I was unable to locate any evidence to the location of the corner. I reset the corner based on physical evidence of the Allen and Barber surveys. Verified this location using EDM & GPS methods.

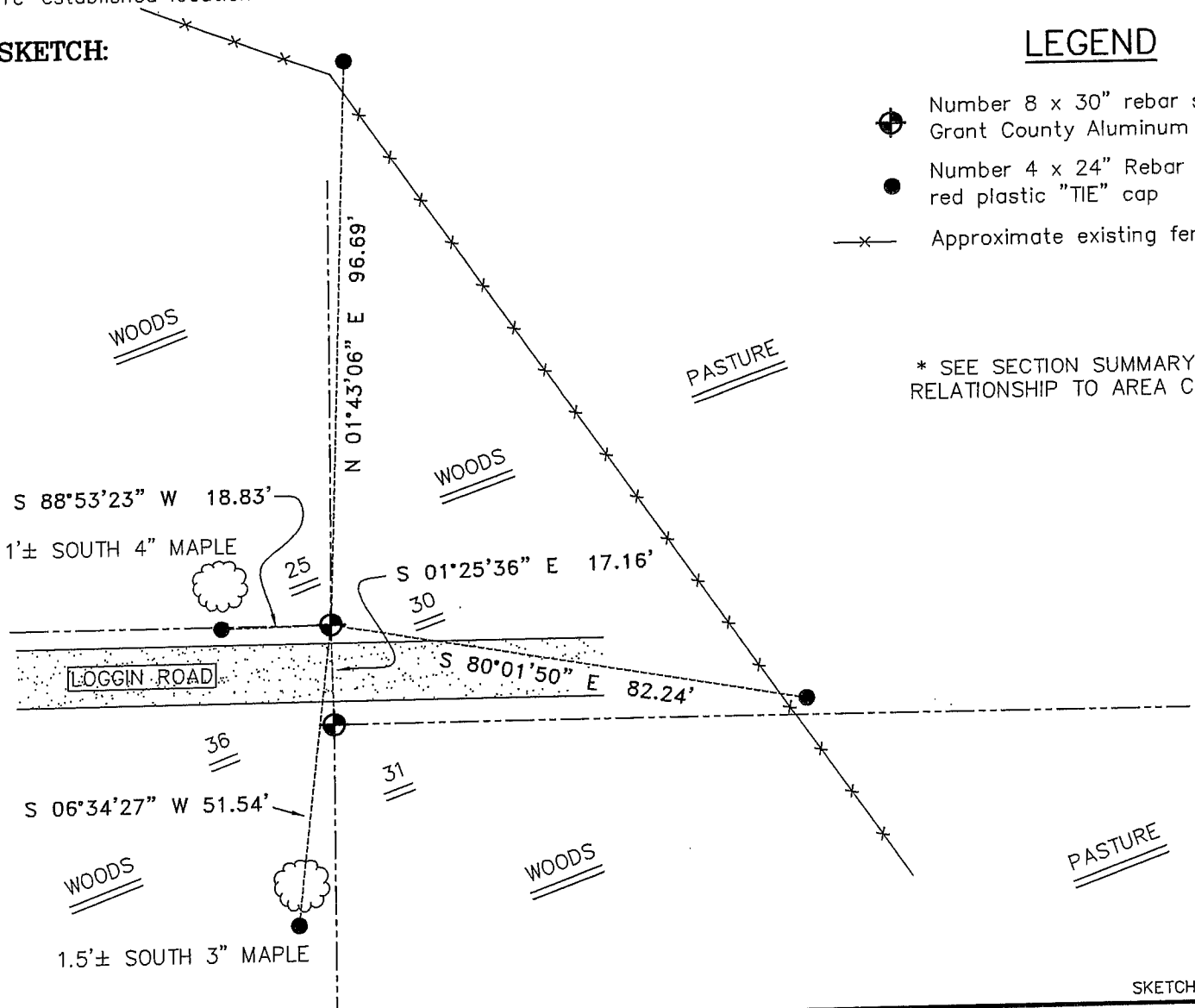
**DESCRIPTION OF CORNER AND WITNESS MONUMENTS**, references and accessories used to perpetuate the original or re-established location of this corner. Witnesses to corner location Bobby Sedgwick & Shane Austin & Brad Digman

**SKETCH:**

**LEGEND**

- Number 8 x 30" rebar set with Grant County Aluminum Cap
- Number 4 x 24" Rebar set with red plastic "TIE" cap
- x— Approximate existing fence

\* SEE SECTION SUMMARY FOR \*  
RELATIONSHIP TO AREA CORNERS



SKETCH NOT TO SCALE

**AUSTIN ENGINEERING, LLC**

4211 HWY 81 EAST, LANCASTER, WI 53813  
PHONE 608-723-6363 FAX 608-723-6702

FIELDBOOK: TDS RNGR, 2230

G: \T3NR3W\36

H: \TIE\T3NR3W\121

JOB NUMBER 03S197

DRAWN BY: SW AUSTIN

APPROVED: LL AUSTIN

**CORNER NUMBER 101**