

U.S. PUBLIC LAND SURVEY MONUMENT RECORD - GRANT COUNTY, WI

Section 26, Town 3 North Range 3 West, Town of Potosi (a)

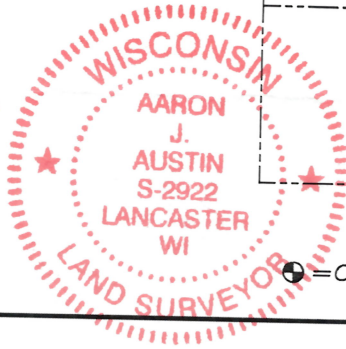
NOTE: This form is intended and designed to fulfill all requirements of the Wisconsin Administrative Code Chapter A-E 7.08, U.S. Public Land Survey Monument Record (3) (a) (b) (c) (d) (e) (f) (g) (h) (i).

CERTIFICATE: (i)

I, Aaron J. Austin, Wisconsin Professional Land Surveyor, do hereby certify that the corner location on this record was determined by me and/or under my direct supervision and that this U.S. Public Land Survey Monument Record is correct and complete to the best of my knowledge and belief.

Dated this 29th day of April, 2021.

Aaron J Austin
Aaron J. Austin, S-2922



Grant County Coordinates:
NAD 83 (2011)
Northing: 471,180.13
Easting: 826,727.55

● = CORNER LOCATION

HISTORY OF CORNER ESTABLISHMENT:

Original corner was set in 1833 by Robert Clark.
Douglas Malliet set a Railroad Spike and prepared a Survey Monument Record dated 4/24/1985.
Bruce Bowden found an Aluminum Monument on a Survey filed in Book P Page 67 dated 4-16-1991.
Larry Austin found an Aluminum Monument on a Survey filed in Book 1 Page 16 dated 9-19-1997.

DESCRIPTION OF CORNER EVIDENCE FOUND: (b) (f) (g) (h)

I set a Railroad Spike from previous measurements on a survey filed in Book 34 Page 47 dated 10-4-2013. I established four witness corners after I verified the Monument's location with G.P.S. and E.D.M. methods.

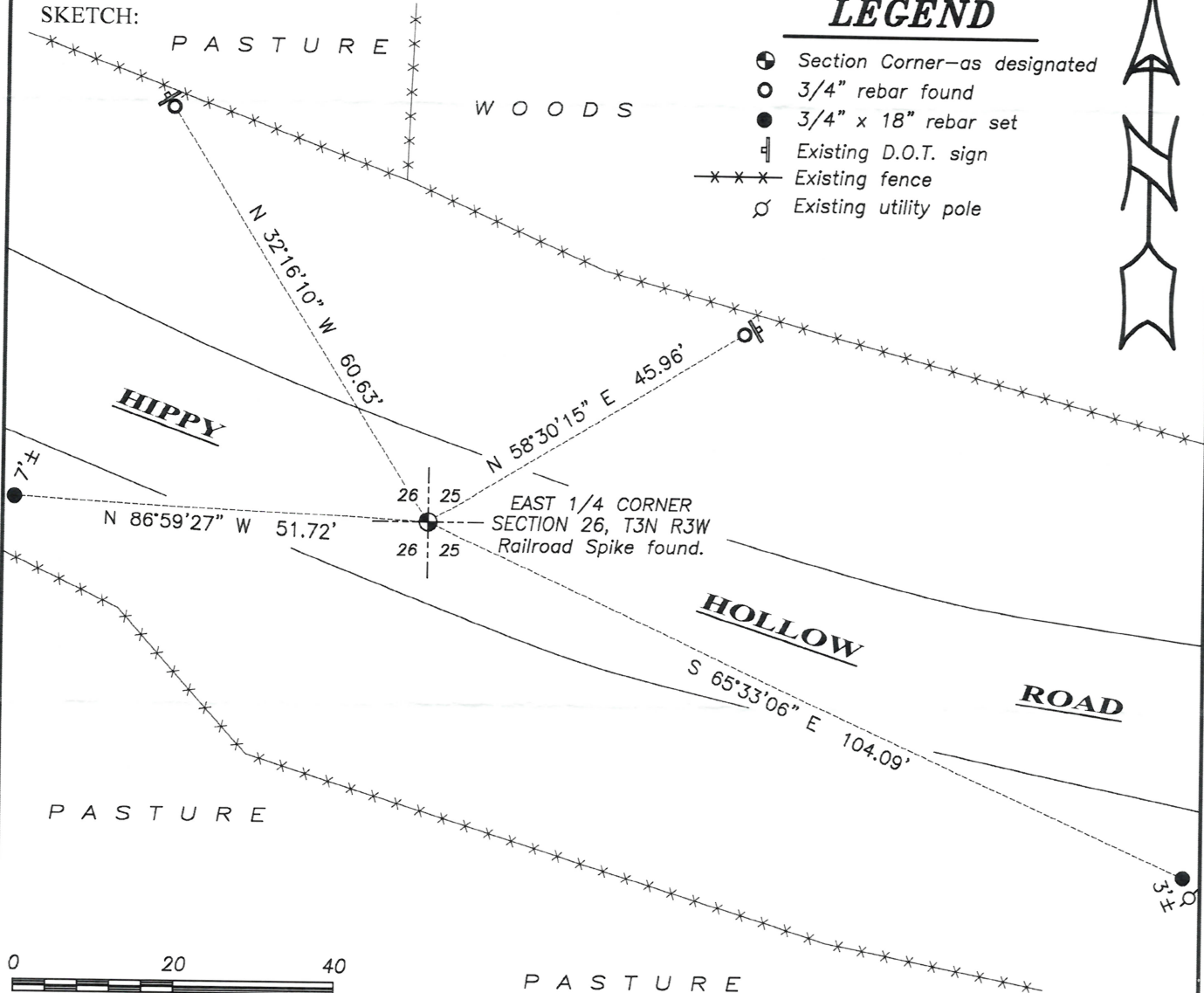
DESCRIPTION OF CORNER AND WITNESS MONUMENTS,

references and accessories used to perpetuate the original or re-established location of this corner. (c) (d) (e)
Witnesses to corner location Shane Austin, Owen Austin.
Drawn by: Owen Austin.

SKETCH:

LEGEND

- Section Corner—as designated
- 3/4" rebar found
- 3/4" x 18" rebar set
- ⊥ Existing D.O.T. sign
- *** Existing fence
- ⊕ Existing utility pole



US. PUB' IC LAND SURVEY MONUMENT RECORD

CORNER DESCRIPTION: E 1/4 CORNER, SECTION 26, T 3 N, R 3 W

STATE PLANE COORDINATES: N _____, E _____

THETA ANGLE: _____

HORIZONTAL DATUM: WISCONSIN STATE PLANE COORDINATE SYSTEM, SOUTH ZONE

EVIDENCE: ROAD SURVEY PERFORMED DEC. 6, 1853 CALLS FOR E ROAD AT E 1/4 CORNER, USED E OF ROAD AND ANCIENT FENCE AS EVIDENCE

MONUMENT: FOUND , PLACED

METHOD OF RESTORATION (RE-ESTABLISHMENT):

ACCEPTED EXISTING MONUMENT

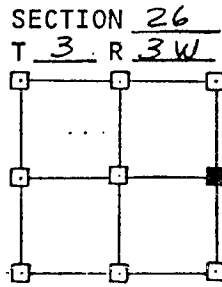
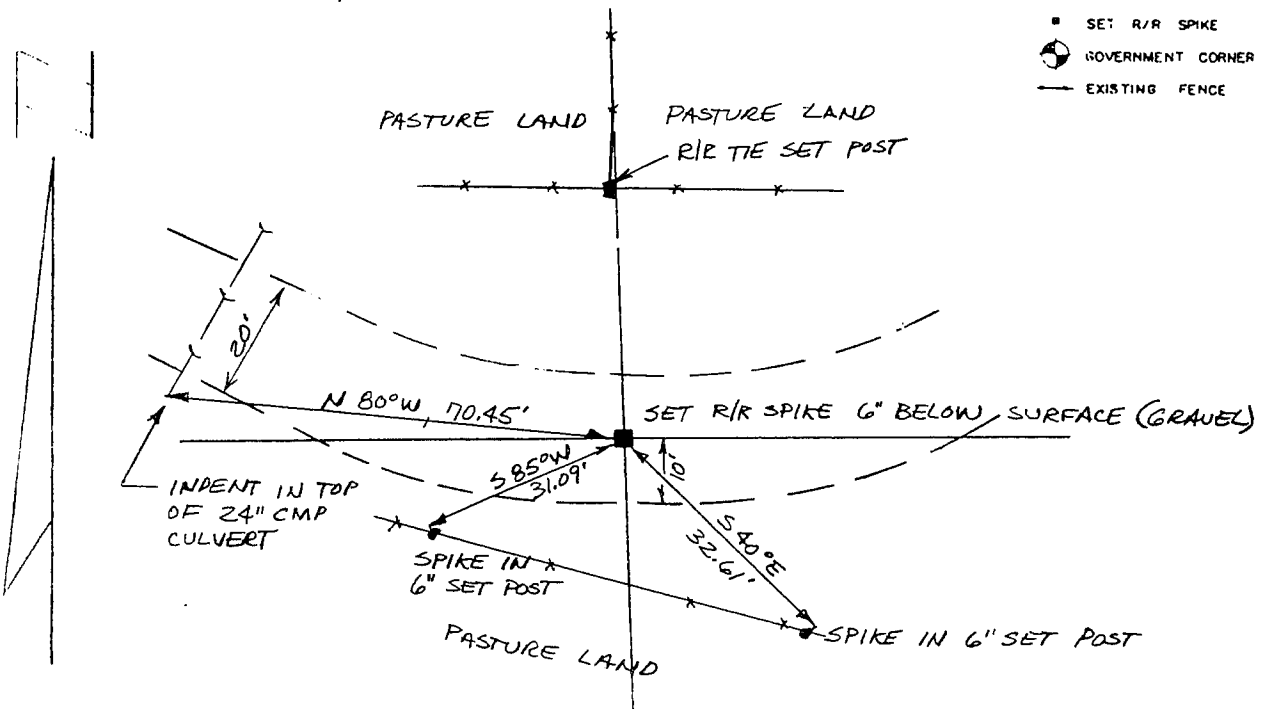
N , E ACCEPTED OCCUPATION

N , E LOST CORNER PROPORTIONATE METHODS

DATE CORNER SET: 4/24/85

LEGEND

- ▲ SET #6 REBAR, 113 LBS PER LINEAL FT. MIN. WT
- SET 1" X 24" IRON PIPE, 113 LBS PER LINEAL FT. MIN WT
- SET 2" X 30" IRON PIPE, 365 LBS PER LINEAL FT MIN WT
- FOUND 1" IRON PIPE
- FOUND 2" IRON PIPE
- FOUND R/R SPIKE
- SET R/R SPIKE
- ⊙ GOVERNMENT CORNER
- EXISTING FENCE



NOT TO SCALE THIS CONFORMS TO WISCONSIN ADMINISTRATIVE CODE A-E 5.02

SURVEYOR'S AFFIDAVIT:

STATE OF WISCONSIN)
GRANT COUNTY) SS

I hereby certify that I, DOUGLAS J. MALLIET, have complied with the Wisconsin State Statutes, Statutes of the United States, and the rules and regulations made by the Secretary of the Interior in the location of the corner shown above.

DATE OF SURVEY: 4/24/85 Douglas J. Malliet
 REGISTERED LAND SURVEYOR
 # 1266



D. F. BURBACH MUNICIPAL & CIVIL ENGINEERS

410 NORTH SECOND STREET • PLATTEVILLE, WISCONSIN 53818 • (608) 348-3262

p. 99