

33099.5

U.S. PUBLIC LAND SURVEY MONUMENT RECORD - GRANT COUNTY, WI

Section 25, Town 3 North Range 3 West, Town of Potosi (a)

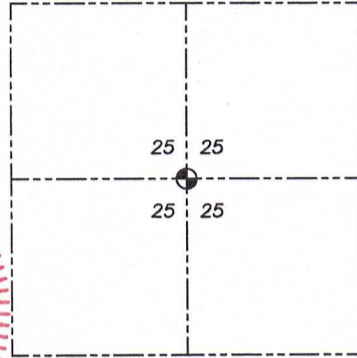
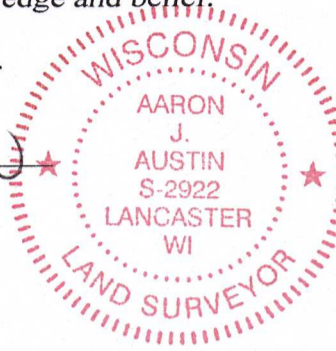
NOTE: This form is intended and designed to fulfill all requirements of the Wisconsin Administrative Code Chapter A-E 7.08, U.S. Public Land Survey Monument Record (3) (a) (b) (c) (d) (e) (f) (g) (h) (i).

CERTIFICATE: (i)

I, Aaron J. Austin, Wisconsin Professional Land Surveyor, do hereby certify that the corner location on this record was determined by me and/or under my direct supervision and that this U.S. Public Land Survey Monument Record is correct and complete to the best of my knowledge and belief.

Dated this 14th day of July, 2023.

Aaron J. Austin
Aaron J. Austin, S-2922



⊙ = CORNER LOCATION

Grant County Coordinates:
NAD 83 (2011)
Northing: 471,166.46
Easting: 829,372.77

HISTORY OF CORNER ESTABLISHMENT:

Original corner was not set with the Original Government Survey.
Corner was established on a Survey filed in Book C, Page 109 dated 9-4-1854.

DESCRIPTION OF CORNER EVIDENCE FOUND: (b) (f) (g) (h)

I established the Corner by setting a 3/4" x 18" Rebar equidistant between the North 1/4, South 1/4, West 1/4, and East 1/4. This was the method used on Survey in Book, C, Page 109. I set four witness corners after I verified the Monument's location with G.P.S. and E.D.M. methods.

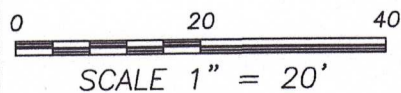
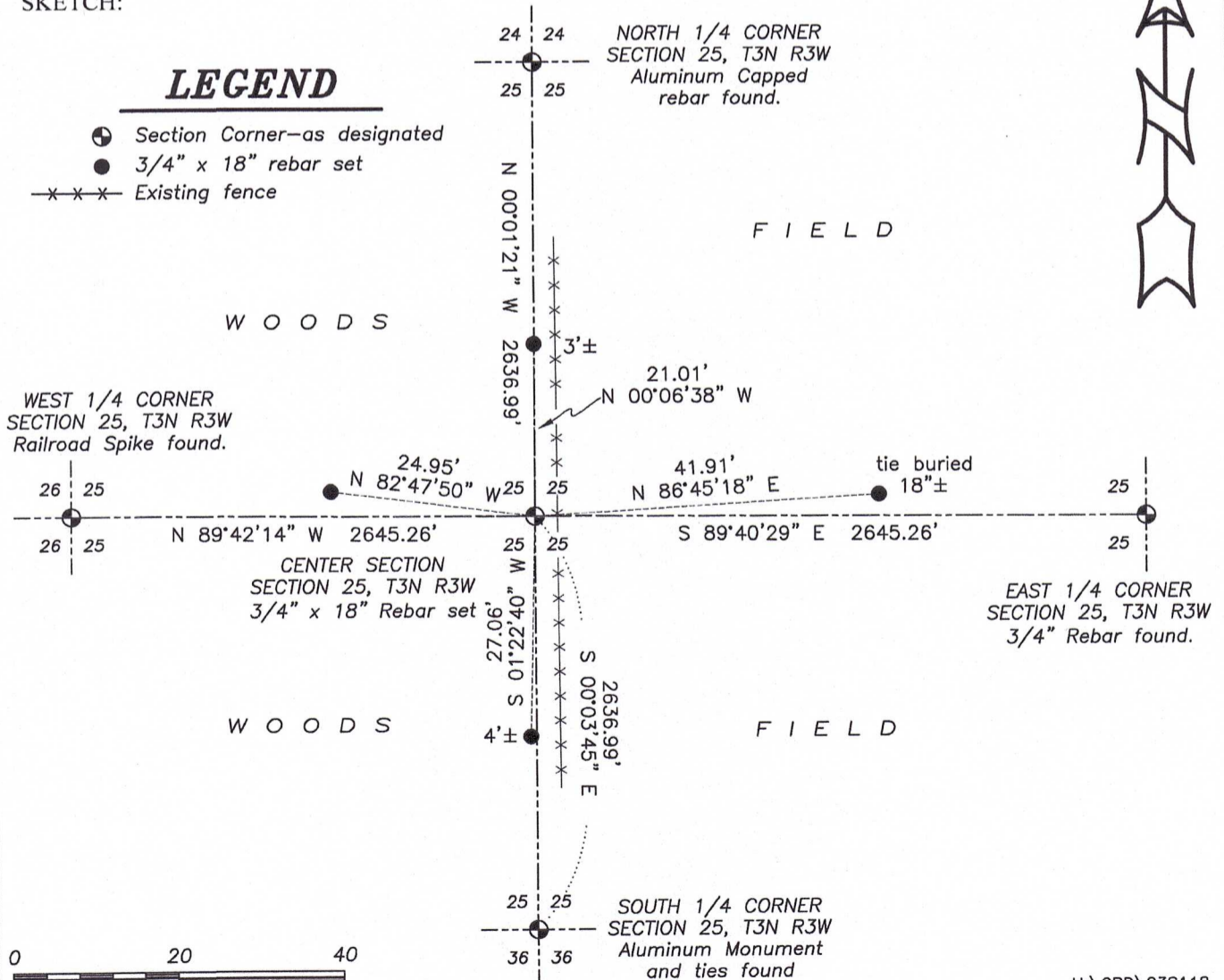
DESCRIPTION OF CORNER AND WITNESS MONUMENTS, references and accessories used to perpetuate the original or re-established location of this corner. (c) (d) (e)

Witnesses to corner location Shane Austin, Tanner Austin.
Drawn by: Owen Austin.

SKETCH:

LEGEND

- ⊙ Section Corner—as designated
- 3/4" x 18" rebar set
- x-x-x- Existing fence



H:\CRD\23S118
H:\TIE\T3NR3W\99.5