

GRANT COUNTY

REC'D MAR 8 1996
Survey Monument Record

CORNER NO. 96
 SECTION 29
 TOWN 3 N
 RANGE 3 W

TYPE OF MONUMENT COUNTY MONUMENT SET

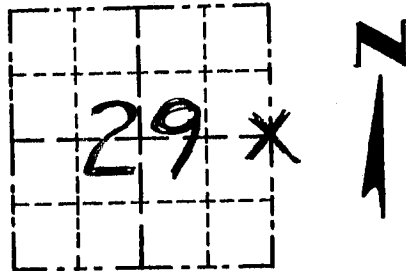
STATE PLANE COORDINATES: N _____
 E _____

ELEVATION — M.S.L. DATUM: _____

THETA ANGLE: _____

FIELD BOOK: 9503

PAGE 27



LOCATION
 (Indicated by "X")

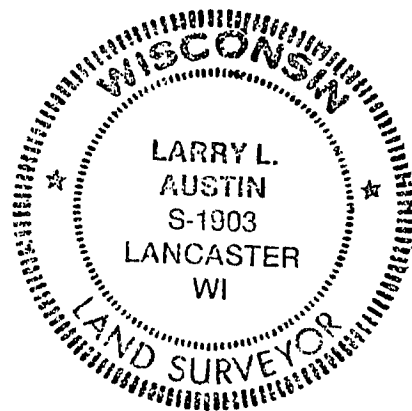
BASIS FOR MONUMENT LOCATION

(Use reverse side if necessary)

Show info such as: History of corner, with reference to Vol. and pg., dates, surveyor; exact description of monument replaced; if location computed, by taped or EDM traverse; landowner, remarks, etc.

SEAL:

- ORIGINAL CORNER SET IN 1833 BY ROBERT CLARK.
- THE CORNER WAS REESTABLISHED IN 1991 BY SEAN WALSH. DOUBLING THE FORTY DISTANCE WAS USED.



- CORNER WAS RESET AT EQUIDISTANT BETWEEN THE NE + SE CORNER WHICH MATCHES $\frac{1}{2}$ PROJECTIONS EAST - WEST

CERTIFIED CORRECT

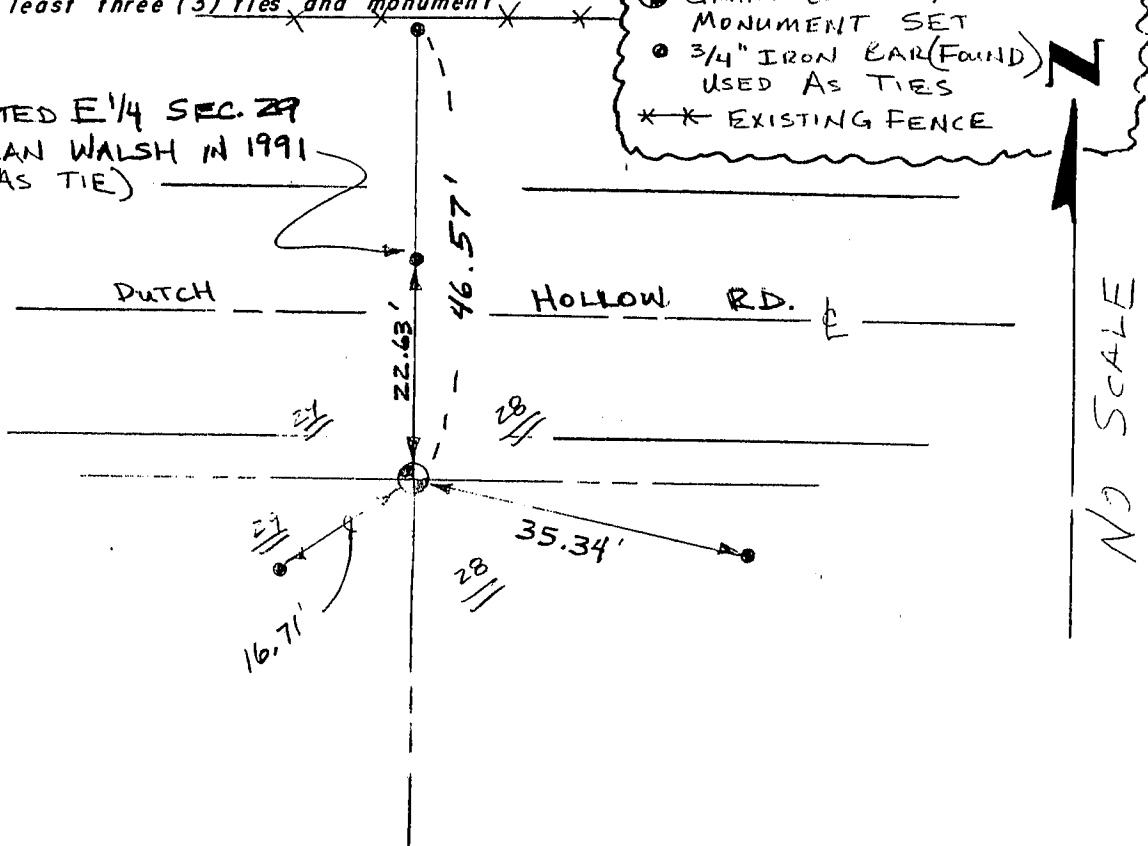
Larry L. Austin
 Registered Land Surveyor

DATE: 2/1/96

TIE SKETCH

Show at least three (3) ties and monument

PURPORTED E 1/4 SEC. 29
 BY SEAN WALSH IN 1991
 (USED AS TIE)



NO SCALE

JUL 1 1991

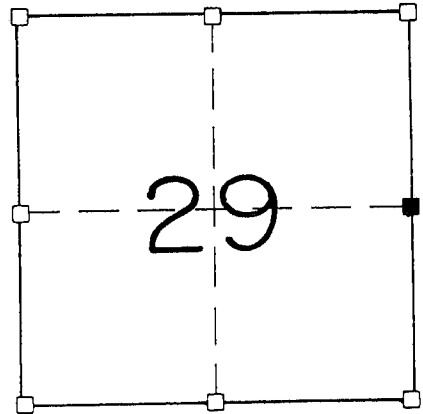
GOVERNMENT CORNER RECORD

EAST 1/4 CORNER, SECTION 29, TOWNSHIP 3 NORTH, RANGE 3 EAST - WEST,
TOWN, CITY OR VILLAGE OF POTOSI
TYPE OF MONUMENT: 3/4" X 24" IRON ROD SET ELEVATION - M.S.L. DATUM

WITNESSES TO CORNER LOCATION

SEAN M. WALSH
PATRICK J. DEDERICH

SECTION 29, T. 3 N, R. 3 EW
TOWN OF POTOSI



■ - CORNER LOCATION
○ - 3/4" X 24" IRON ROD SET

TIE SKETCH
(SHOW ALL HELPFUL FEATURES)

FIELD

FIELD

DUTCH

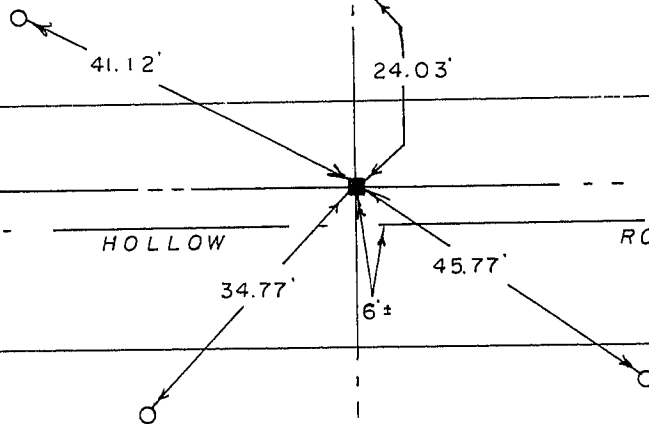
HOLLOW

ROAD

GRAVEL

YARD

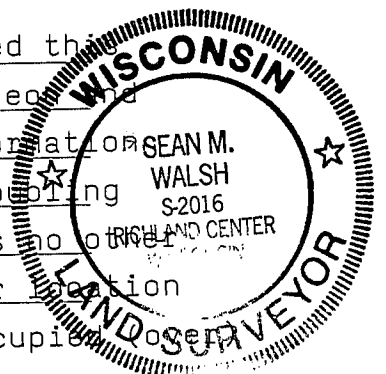
SHED



SURVEYOR'S CERTIFICATE

SEAL S. 2016

I, Sean M. Walsh, DO HEREBY CERTIFY THAT I have established this corner in accordance with the information contained hereon and that this information is correct to the best of my information, knowledge and belief. I established this location by doing the forty distance and line from the South as there was no evidence either record or physical to support any other location for this corner, this location fits well with other occupiers.
DATED THIS 14TH DAY OF JUNE, 1991



REGISTERED LAND SURVEYOR

1000

and monumented corners within section 29 and the surrounding area.