

# SECTION CORNER TIE SHEET

To the N 1/4 corner of Section 30, Town 3 North, Range 3 West, Potosi Township, Grant County, Wisconsin.

I, Terrance L. Genske, hereby certify that I have complied with the Wisconsin Statutes, Statutes of the United States, and the rules and regulations made by the Secretary of the Interior in the location of the corner shown below.

Terrance L. Genske  
Terrance L. Genske  
6/12/80



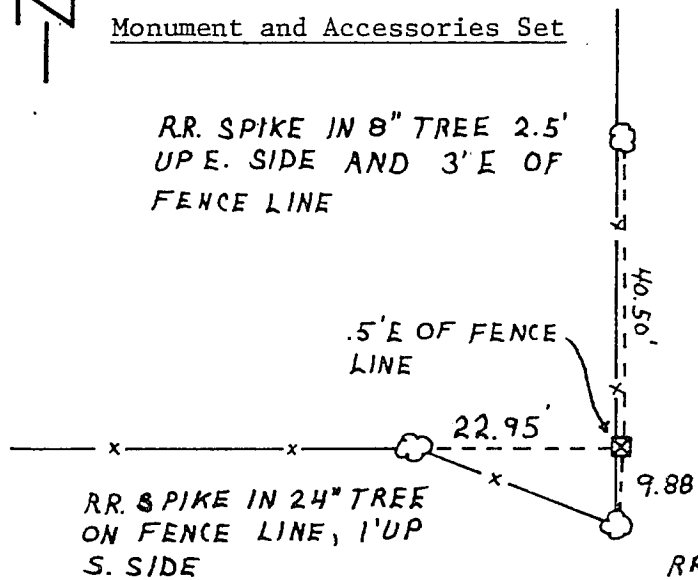
Description of Original Monument and Accessories

Wood post set by Robert Clark on January 24, 1833  
White oak 18N16E 27 links  
White oak 14N15W 21 links

Monument and Accessories Set

LEGEND  
☒ ALUMINUM MONUMENT SET

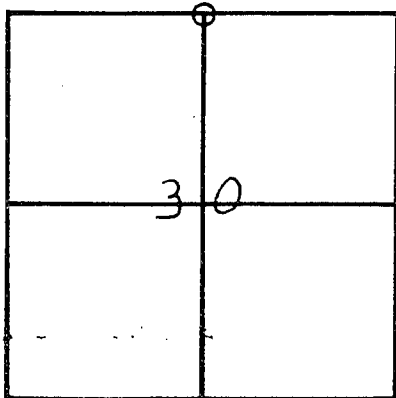
RR SPIKE IN 8" TREE 2.5'  
UP E. SIDE AND 3' E OF  
FENCE LINE



NOTE: MONUMENT SET  
1" ABOVE GRADE

RR SPIKE IN 24" TREE  
ON FENCE LINE, 1' UP  
S. SIDE

RR SPIKE IN 10" TREE ON  
FENCE LINE, 1' UP E. SIDE



Description of Corner Evidence

Corner set by physical evidence as follows:

WISCONSIN  
TERRANCE L. GENSKE  
S-1443  
MADISON, WIS.  
LAND SURVEYOR  
6/17/80  
Terrance L. Genske

