

# U.S. PUBLIC LAND SURVEY MONUMENT RECORD - GRANT COUNTY, WI

Section 27, Town 3 North Range 3 West, Town of Potosi

**CERTIFICATE:**

I, Aaron J. Austin, Wisconsin Professional Land Surveyor, do hereby certify that the corner location on this record was determined by me and/or under my direct supervision and that this U.S. Public Land Survey Monument Record is correct and complete to the best of my knowledge and belief.

Dated this 17th day of December, 2015.

AARON  
AUSTIN  
S-2922  
LANCASTER  
WI  
AUSTIN  
AND SURVEYOR



**HISTORY OF CORNER ESTABLISHMENT:**

1833-Robert Clark set the original corner.  
1981-David Davis reset the corner and prepared a Certified Land Corner record for the corner.  
Several surveys have accepted Davis's corner location.

**DESCRIPTION OF CORNER EVIDENCE FOUND:**

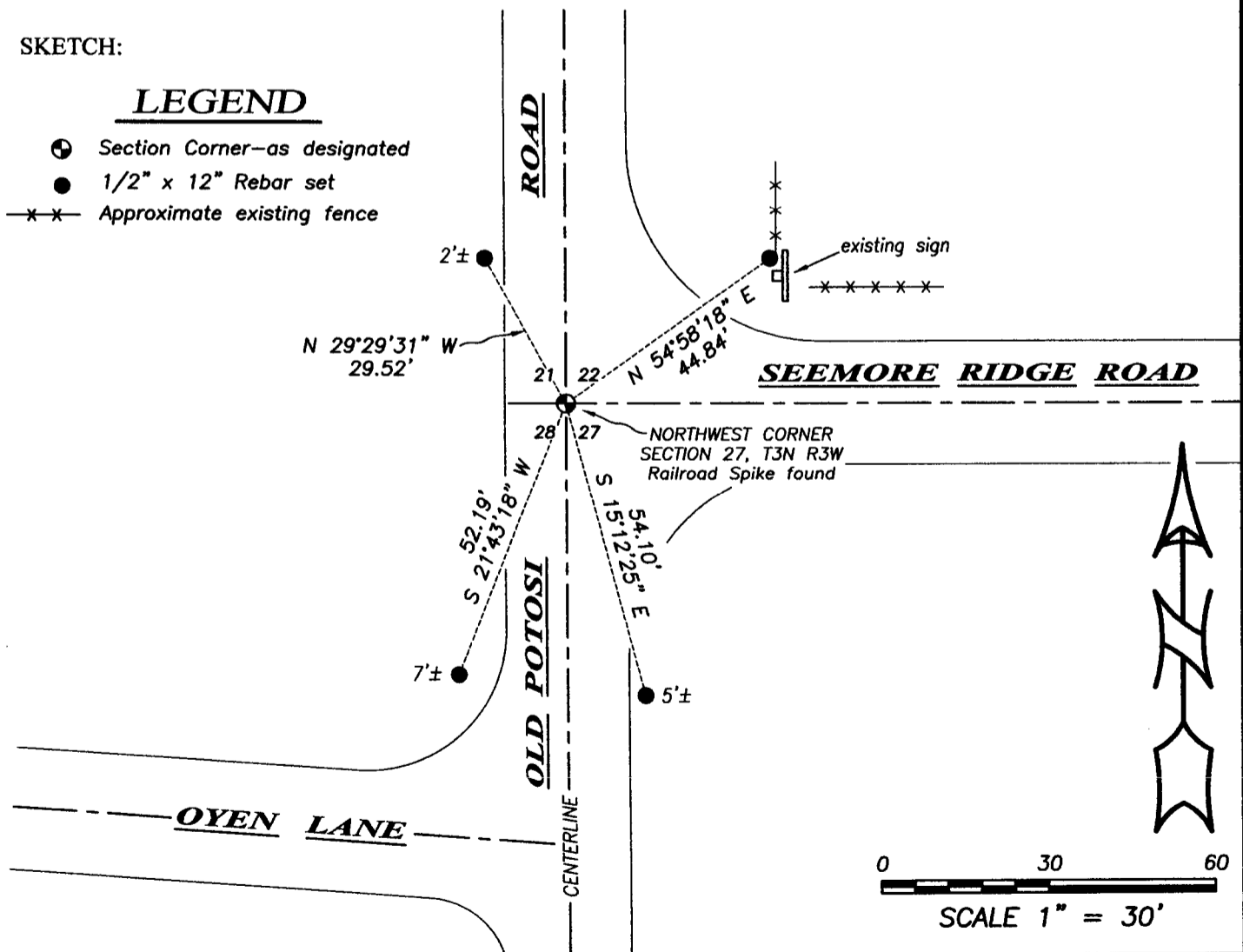
I found the Railroad spike set by Davis at the intersection of Old Potosi Road and Seemore Ridge Road. I set 4 new witness corners after I verified it's location with G.P.S. and E.D.M. methods.

**DESCRIPTION OF CORNER AND WITNESS MONUMENTS, references and accessories used to perpetuate the original or re-established location of this corner. Witnesses to corner location Shane Austin.**

**SKETCH:**

**LEGEND**

- ⊙ Section Corner—as designated
- 1/2" x 12" Rebar set
- x — Approximate existing fence



**Austin Engineering LLC**  
austinengineeringllc.com

4211 HWY 81 E, LANCASTER, WI 53813  
PHONE: 608-723-6363 FAX: 608-723-6702

JOB NO: 15s224  
H:CRD\15s224  
H:\TIE\T3NR3W\87

FIELDBOOK: TDSR  
DRAWN BY: AJ AUSTIN  
CREW: SW AUSTIN

CERTIFIED LAND CORNER

STATE OF WISCONSIN )  
 COUNTY OF GRANT ) S.S.

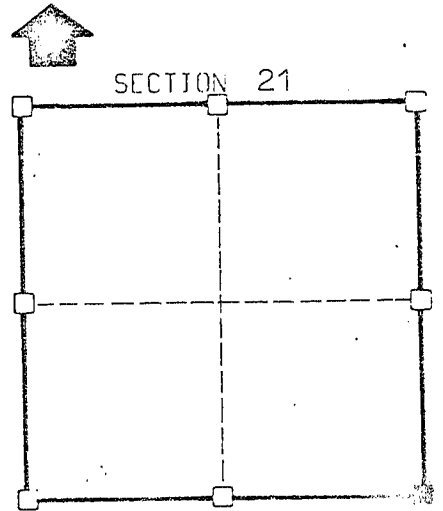
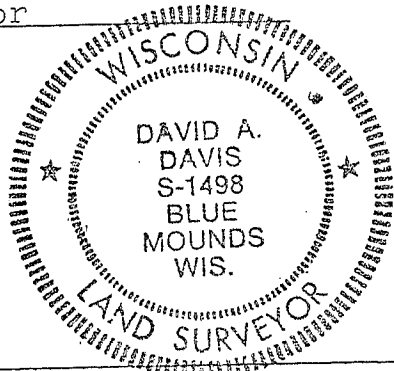
CERTIFICATE  
 I, David A. Davis, do hereby certify  
 that on the \_\_\_\_\_ day of December 1980,  
 I found (evidence) (~~no evidence~~) of the Southeast  
 corner of Section 21, T 3N, R 3W,  
 Fourth Principal Meridian, and I re-established  
 said corner according to the Wisconsin Statutes  
 as shown and described hereon.

Dated this 22 day of September 1981

David A. Davis

Registered land surveyor  
 Title

SOUTHWEST ENGINEERING, INC.  
 206 S. Iowa Street  
 DODGEVILLE, WIS. 53533



SECTION 21  
 = corner location  
 T 3 N R 3 W  
 Town of: Potosi

Seal

History of original corner establishment:

3 - 1881 surveys by J. C. Scott - Bearing trees not found.

Accepted intersection of travelled centerlines of Old Potosi Rd. & See More Ridge Rd.

Description of corner evidence found:

Description of corner and witness monuments, references and accessories used to perpetuate the original or re-established location of this corner:

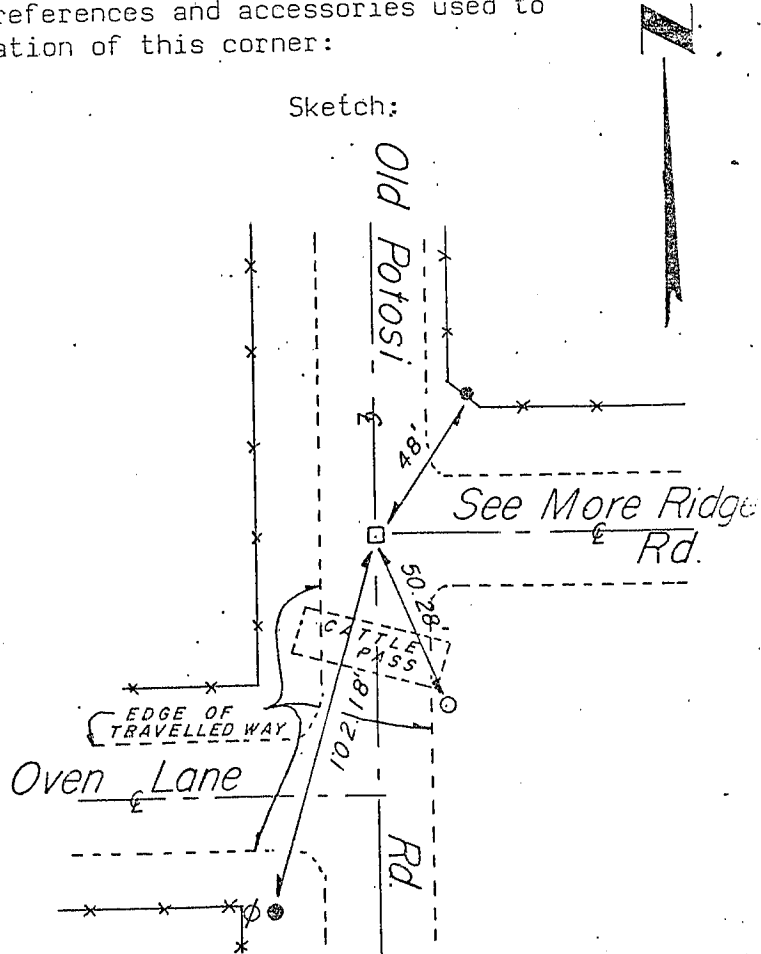
Witnesses to corner location:

Sketch:

\_\_\_\_\_  
 \_\_\_\_\_  
 \_\_\_\_\_  
 \_\_\_\_\_

Legend

- R.R. Spike
- 1" Ø Iron pipe
- 1-1/2" Iron pipe
- ⊙ Power pole
- ✕✕ Fenceline



SURVEY CONTROL ORDER

Horizontal				
Vertical				
Corner	East(X)	North(Y)	Elevation(Z)	Zone
Control Sta. Name				