

U.S. PUBLIC LAND SURVEY MONUMENT RECORD

Section 27, Town 3 North Range 3 West, Town of Potosi, Grant County, Wisconsin

CERTIFICATE

I, Larry L. Austin, do hereby certify that the corner location on this record was determined by me and/or under my direct supervision and that this U.S. public land survey monument record is correct and complete to the best of my knowledge and belief.

Aaron J. Austin
 Aaron J. Austin, S-2922



● = CORNER LOCATION

HISTORY OF CORNER

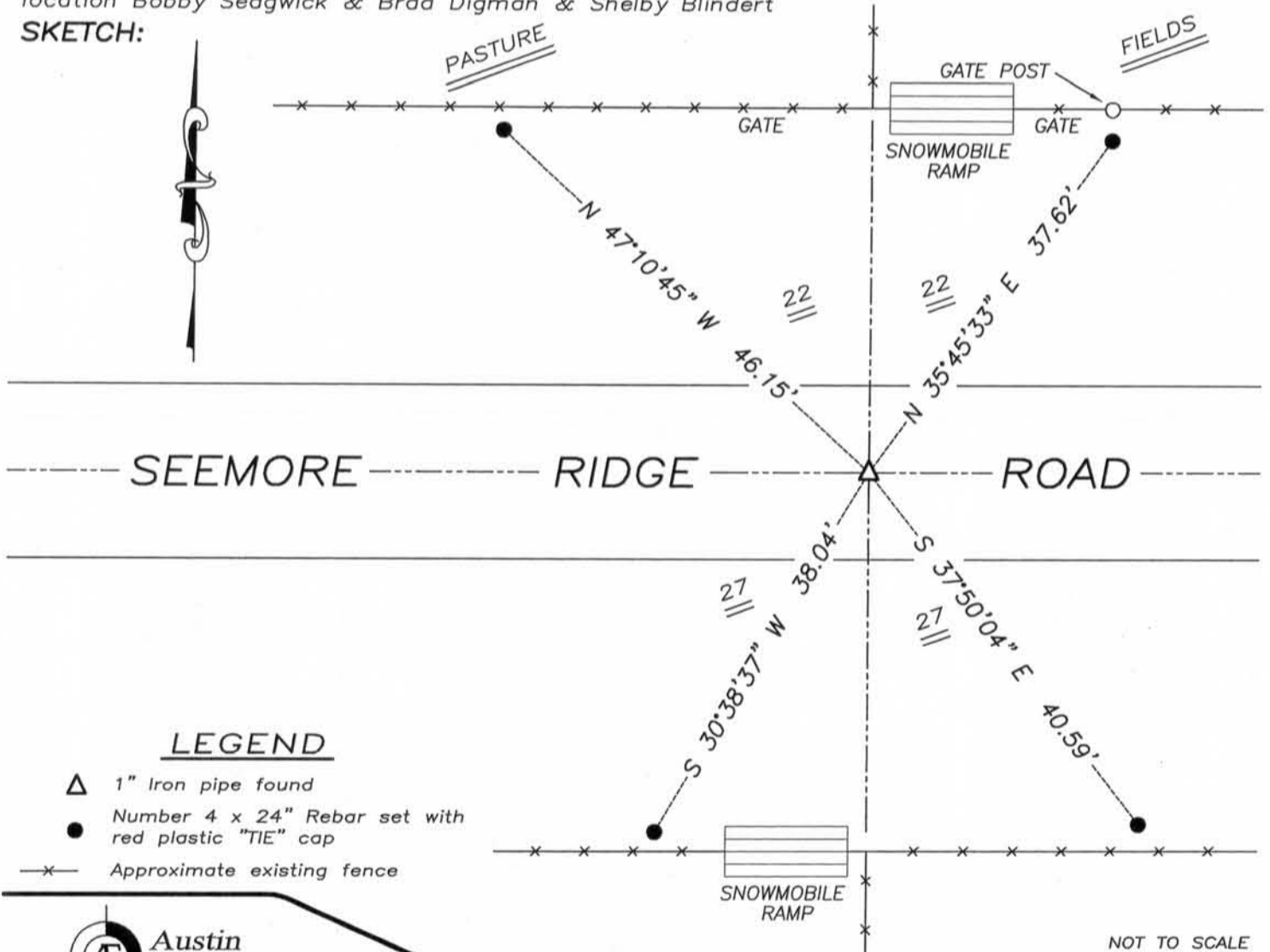
Corner was originally set in 1833 by Clark. No other record of the corner was found.

CORNER EVIDENCE FOUND

I found an existing 1" iron pipe at an occupied location. I accepted it's location after an EDM & GPS traverse of the area.

DESCRIPTION OF CORNER AND WITNESS MONUMENTS, references and accessories used to perpetuate the original or re-established location of this corner. Witnesses to monument location Bobby Sedgwick & Brad Digman & Shelby Blindert

SKETCH:



LEGEND

- △ 1" Iron pipe found
- Number 4 x 24" Rebar set with red plastic "TIE" cap
- x- Approximate existing fence

NOT TO SCALE



Austin Engineering LLC
 austinengineeringllc.com

4211 HWY 81 E, LANCASTER, WI 53813
 PHONE: 608-723-6363 FAX: 608-723-6702

JOB NUMBER 10S237-JENTZ
 FIELDBOOK: TDSR, 10-04
 G:\T3NR3W\34GCC
 H:\TIE\T3NR3W\86

DRAWN BY: SW AUSTIN
 APPROVED: AJ AUSTIN