

U.S. PUBLIC LAND SURVEY MONUMENT RECORD - GRANT COUNTY, WI

Section 25, Town 3 North Range 3 West, Town of Potosi (a)

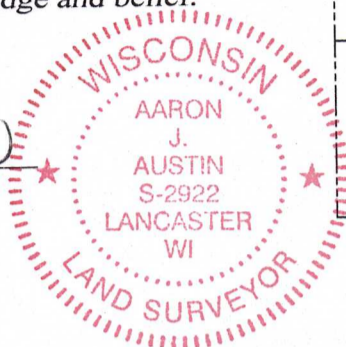
NOTE: This form is intended and designed to fulfill all requirements of the Wisconsin Administrative Code Chapter A-E 7.08, U.S. Public Land Survey Monument Record (3) (a) (b) (c) (d) (e) (f) (g) (h) (i).

CERTIFICATE: (i)

I, Aaron J. Austin, Wisconsin Professional Land Surveyor, do hereby certify that the corner location on this record was determined by me and/or under my direct supervision and that this U.S. Public Land Survey Monument Record is correct and complete to the best of my knowledge and belief.

Dated this 14th day of July, 2023.

Aaron J. Austin
Aaron J. Austin, S-2922



⊕ = CORNER LOCATION

Grant County Coordinates:
NAD 83 (2011)
Northing: 473,803.45
Easting: 829,371.73

HISTORY OF CORNER ESTABLISHMENT:

Original corner was set in 1833 by Robert Clark.
Steven Rossman set a 3/4" Rebar on a C.S.M. #613 dated 3-17-2000.
Aaron Austin found a 3/4" Rebar and placed a Grant County Aluminum Cap and prepared a Survey Monument Record dated 10-4-2013.

DESCRIPTION OF CORNER EVIDENCE FOUND: (b) (f) (g) (h)

I found the Aluminum Capped Rebar and two witness corners. I set two additional witness corners after I verified the Monument's location with G.P.S. and E.D.M. methods.

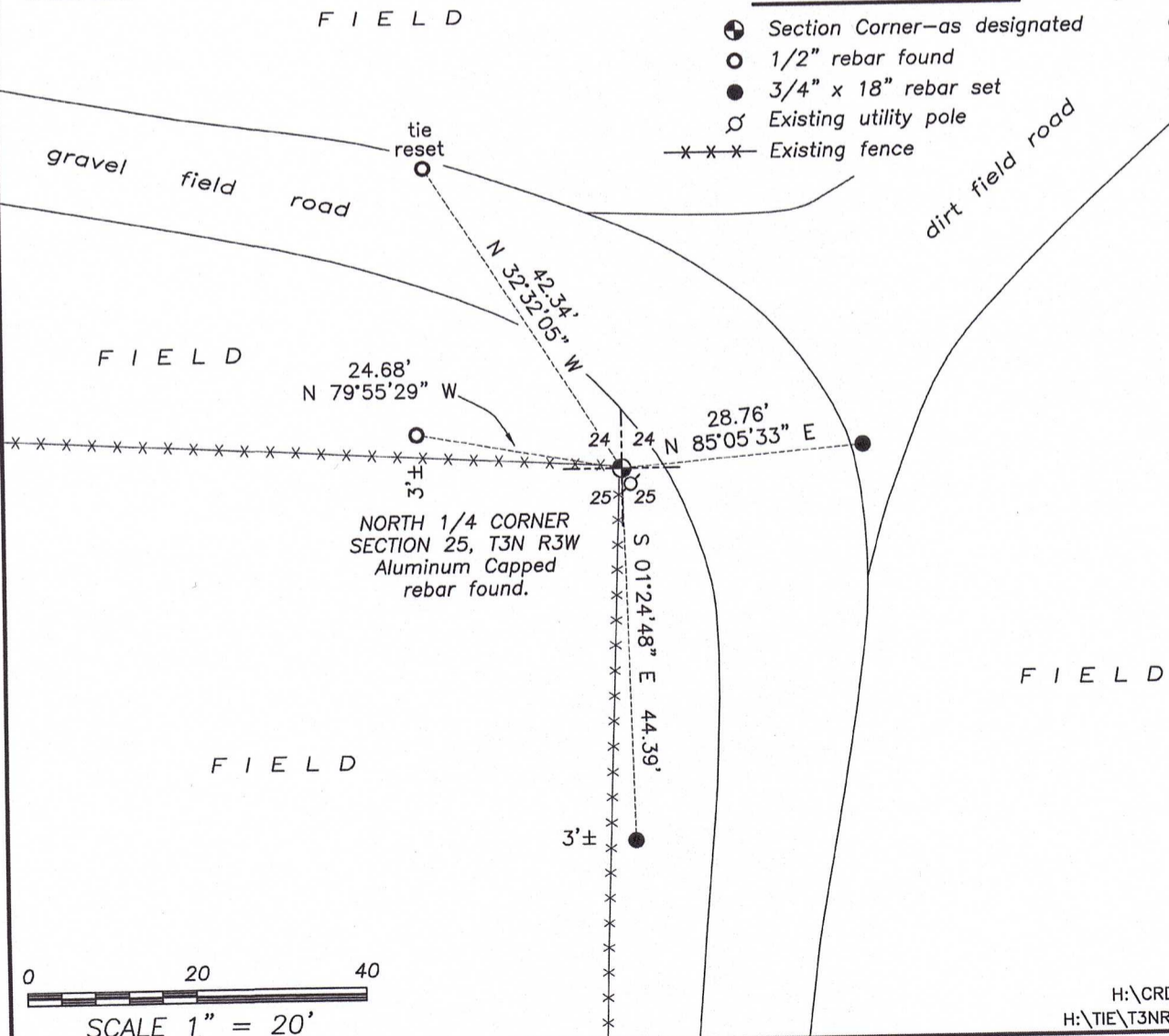
DESCRIPTION OF CORNER AND WITNESS MONUMENTS, references and accessories used to perpetuate the original or re-established location of this corner: (c) (d) (e)

Witnesses to corner location Owen Austin, Tanner Austin.
Drawn by: Owen Austin.

SKETCH:

LEGEND

- ⊕ Section Corner—as designated
- 1/2" rebar found
- 3/4" x 18" rebar set
- ⊕ Existing utility pole
- x-x-x Existing fence



U.S. PUBLIC LAND SURVEY MONUMENT RECORD - GRANT COUNTY, WI

Section 25, Town 3 North Range 3 West, Town of Potosi

CERTIFICATE:

I, Aaron J. Austin, do hereby certify that the corner location on this record was determined by me and/or under my direct supervision and that this U.S. Public Land Survey Monument Record is correct and complete to the best of my knowledge and belief.

Dated this 4th day of October, 2013.

Aaron J. Austin
 Aaron J. Austin, S-2922



● = CORNER LOCATION

HISTORY OF CORNER ESTABLISHMENT:

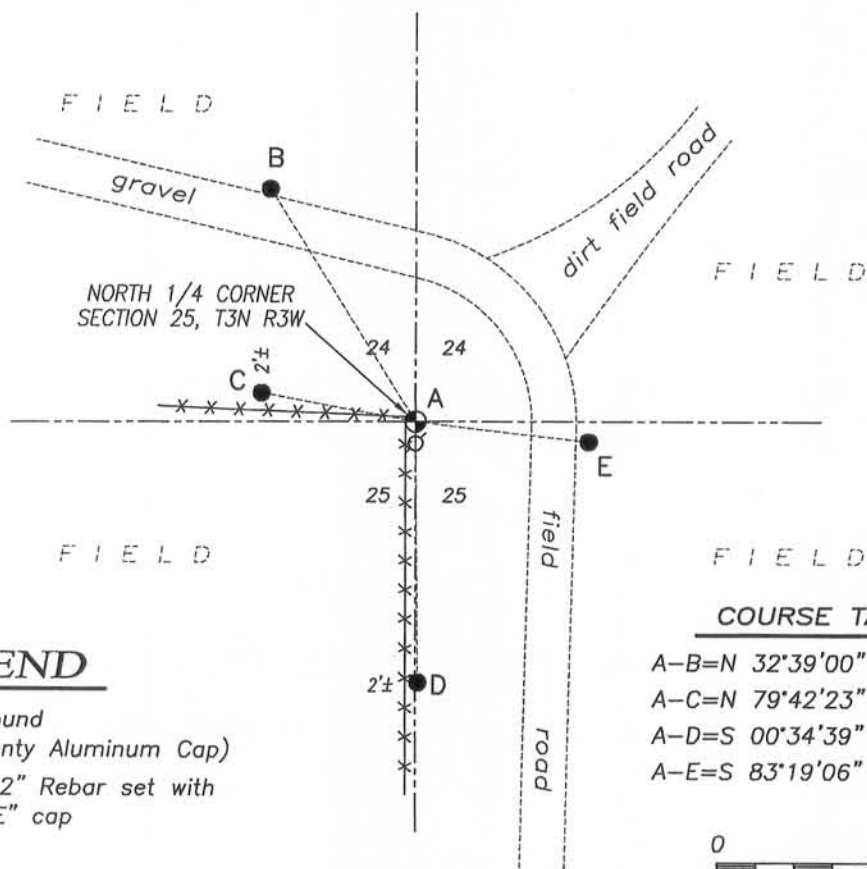
- 1833 Robert Clark set original corner.
- 1844 Wiltse tied to this corner on a survey. (Book A, Page 205)
- 1854 Clark tied to this corner on a survey. (Book C, Page 75)
- 1854 Clark tied to this corner on a survey. (Book C, Page 109)
- 1855 Overton tied to this corner on a survey. (Book B, Page 408)
- 2000 Rossman tied to this corner on a survey. (C.S.M. No. 613)
- 2001 L. Austin tied to this corner on a survey. (C.S.M. No. 728)
- 2005 L. Austin tied to this corner on a survey. (Book 17, Page 8)
- 2011 A. Austin tied to this corner on a survey. (Book 29, Page 4)
- 2011 A. Austin tied to this corner on a survey. (Book 30, Page 34)
- 2011 A. Austin tied to this corner on a survey. (Book 30, Page 83)

DESCRIPTION OF CORNER EVIDENCE FOUND:

In 2000 Steve Rossman set a No. 6 rebar at this location as shown on Certified Survey Map No. 613 recorded in Volume 5 of Certified Survey Maps on Page 20 as Document No. 617398, Grant County Registry. This rebar has been accepted used on several surveys in Sections 24 and 25. I found the No. 6 rebar and placed a Grant County Aluminum Cap on it and set ties as shown hereon.

DESCRIPTION OF CORNER AND WITNESS MONUMENTS, references and accessories used to perpetuate the original or re-established location of this corner. Witnesses to corner location Shane Austin.

SKETCH:

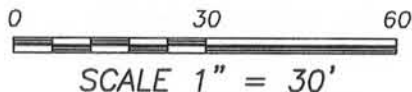


LEGEND

- ⊙ No. 6 rebar found (Set Grant County Aluminum Cap)
- Number 4 x 12" Rebar set with red plastic "TIE" cap
- ⊘ Utility pole
- x-x- Existing fence

COURSE TABLE

A-B=N	32°39'00" W	42.69'
A-C=N	79°42'23" W	24.68'
A-D=S	00°34'39" E	40.49'
A-E=S	83°19'06" E	27.47'



4211 HWY 81 E, LANCASTER, WI 53813
 PHONE: 608-723-6363 FAX: 608-723-6702

JOB NO: 13s159
 G:\13s159
 H:\TIE\T3NR3W\82

FIELDBOOK: TDSR
 DRAWN BY: AJ AUSTIN
 CREW: SW AUSTIN