

CERTIFIED LAND CORNER

STATE OF WISCONSIN)
COUNTY OF GRANT) S.S.

CERTIFICATE

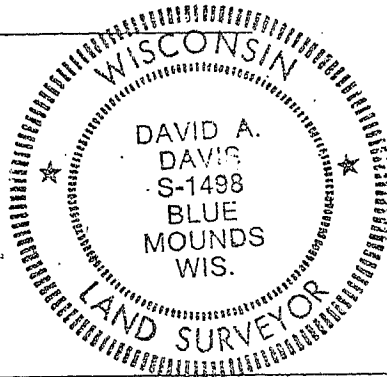
I, David A. Davis, do hereby certify that on the _____ day of December 1980, I found (evidence) ~~(no evidence)~~ of the East 1/4 corner of Section 21, T 3 N, R 3 W, Fourth Principal Meridian, and I re-established said corner according to the Wisconsin Statutes as shown and described hereon.

Dated this 22 day of September 1981

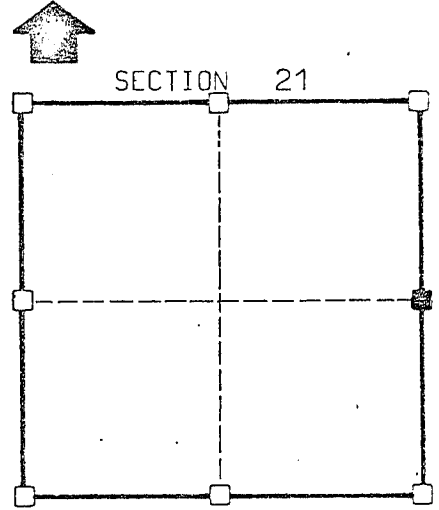
David A. Davis

Registered land surveyor
Title

SOUTHWEST ENGINEERING, INC.
206 S. Iowa Street
DODGEVILLE, WIS. 53533



Seal



■ = corner location

T 3 N R 3 W

Town of: Potosi

History of original corner establishment:

1881 survey by J. C. Scott - His bearing trees not found.
1871 survey by Geo. McFall found original corner.

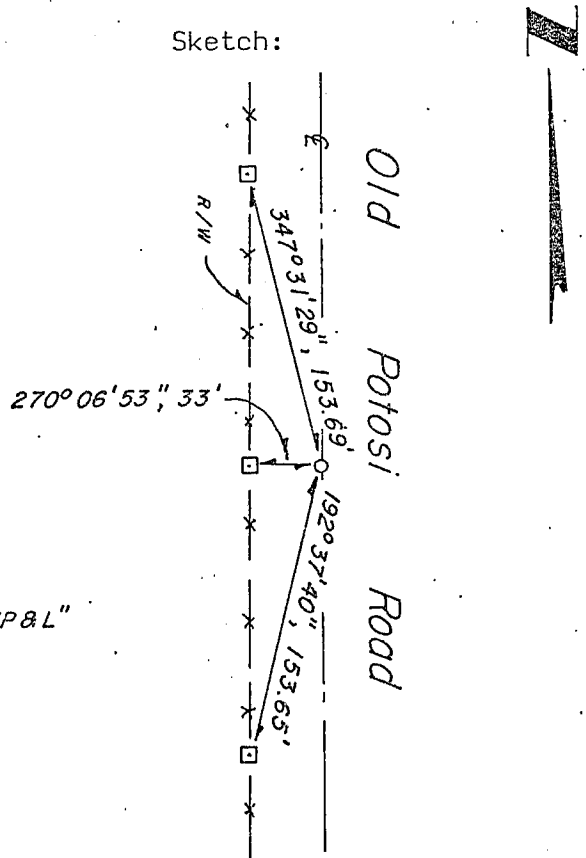
Description of corner evidence found:

Accepted travelled centerline of Old Potosi Road at fences East & West.

Description of corner and witness monuments, references and accessories used to perpetuate the original or re-established location of this corner:

Witnesses to corner location:

Sketch:



Legend

- No. 6 (3/4" Ø) Rebar
- 3-3/4" Ø Aluminum Monument marked "WP&L"
- *-* Fenceline

SURVEY CONTROL ORDER

Horizontal		WISCONSIN COORDINATE SYSTEM		
Vertical	East (X)	North (Y)	Elevation (Z)	Zone
Corner				
Control Sta. Name				