

U.S. PUBLIC LAND SURVEY MONUMENT RECORD - GRANT COUNTY, WI

Section 20, Town 3 North Range 3 West, Town of Potosi (a)

NOTE: This form is intended and designed to fulfill all requirements of the Wisconsin Administrative Code Chapter A-E 7.08, U.S. Public Land Survey Monument Record (3) (a) (b) (c) (d) (e) (f) (g) (h) (i).

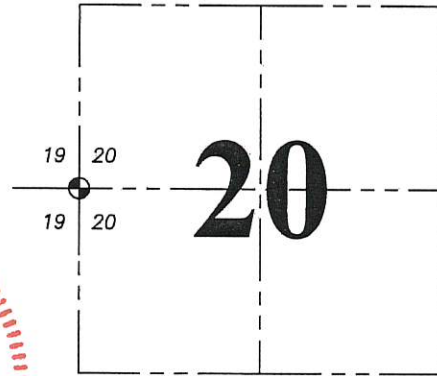
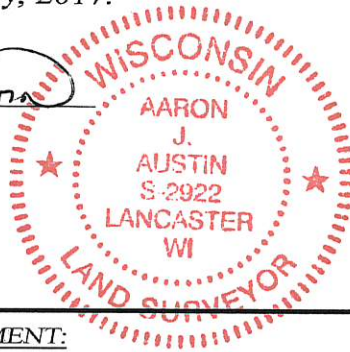
Corner No. 075

CERTIFICATE: (i)

I, Aaron J. Austin, Wisconsin Professional Land Surveyor, do hereby certify that the corner location on this record was determined by me and/or under my direct supervision and that this U.S. Public Land Survey Monument Record is correct and complete to the best of my knowledge and belief.

Dated this 28th day of February, 2017.

Aaron J. Austin
 Aaron J. Austin, S-2922



⊙ = CORNER LOCATION

Grant County Coordinates:
 NAD 83 (2011)
 Northing: 476406.68
 Easting: 805498.78

HISTORY OF CORNER ESTABLISHMENT:

Original corner was set in 1833 by Clark
 Larry Austin reset the corner and prepared a Survey Monument Record dated 8-1-2007.

DESCRIPTION OF CORNER EVIDENCE FOUND: (b) (f) (g) (h)

I found all four witness corners as established by Larry Austin and reset corner from those ties. Corner location was verified with G.P.S. and E.D.M. methods

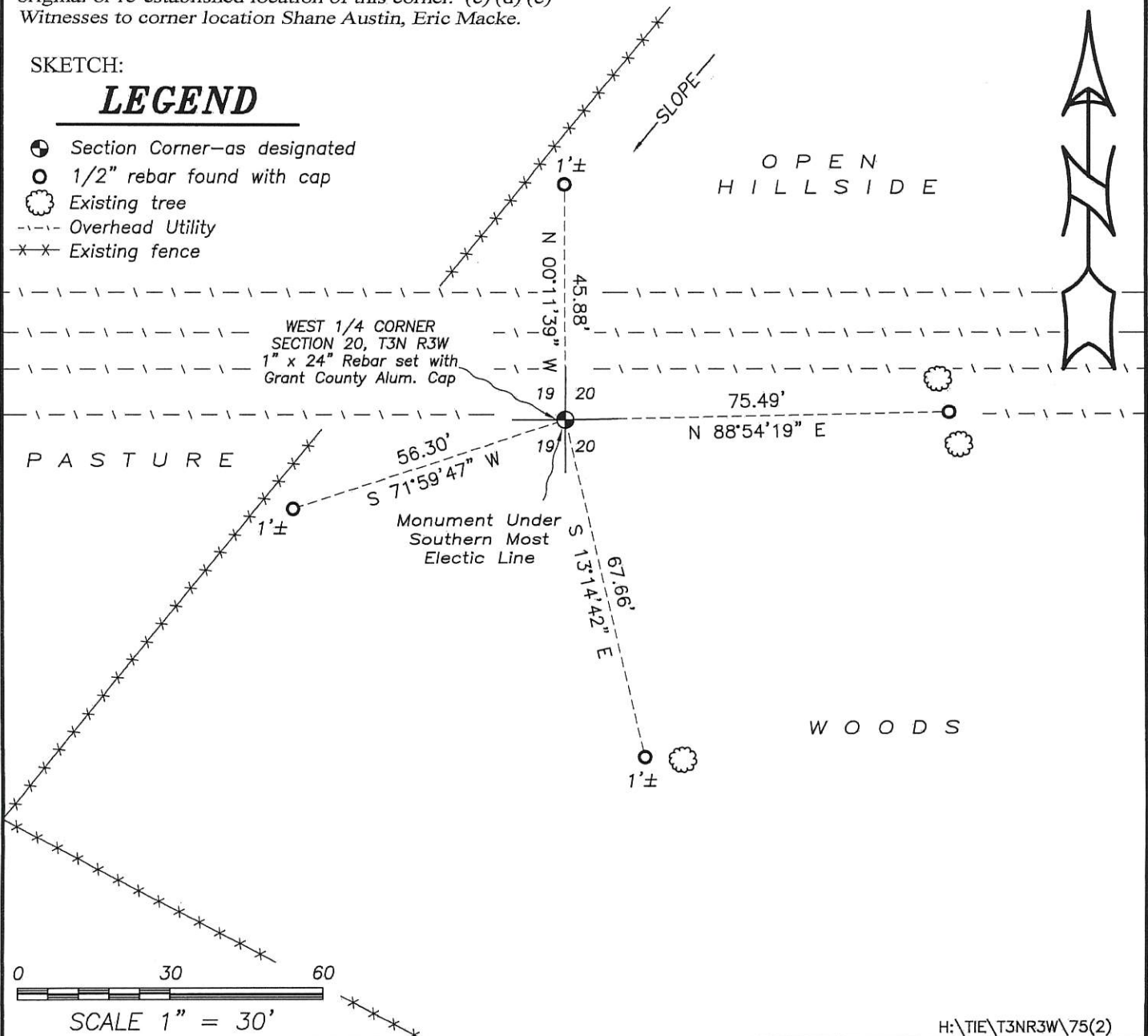
DESCRIPTION OF CORNER AND WITNESS MONUMENTS, references and accessories used to perpetuate the original or re-established location of this corner. (c) (d) (e)

Witnesses to corner location Shane Austin, Eric Macke.

SKETCH:

LEGEND

- ⊙ Section Corner—as designated
- 1/2" rebar found with cap
- ⊗ Existing tree
- - - Overhead Utility
- * * * Existing fence

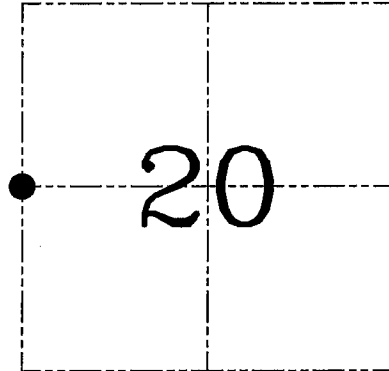


U.S. PUBLIC LAND SURVEY MONUMENT RECORD – GRANT COUNTY, WI
Section 20, Town 3 North Range 3 West, Town of Potosi

CERTIFICATE

I, Larry L. Austin, do hereby certify that the corner location on this record was determined by me and/or under my direct supervision and that this U.S. public land survey monument record is correct and complete to the best of my knowledge and belief.

Larry L. Austin
 Larry L. Austin, S-1903



● = CORNER LOCATION

HISTORY OF CORNER ESTABLISHMENT

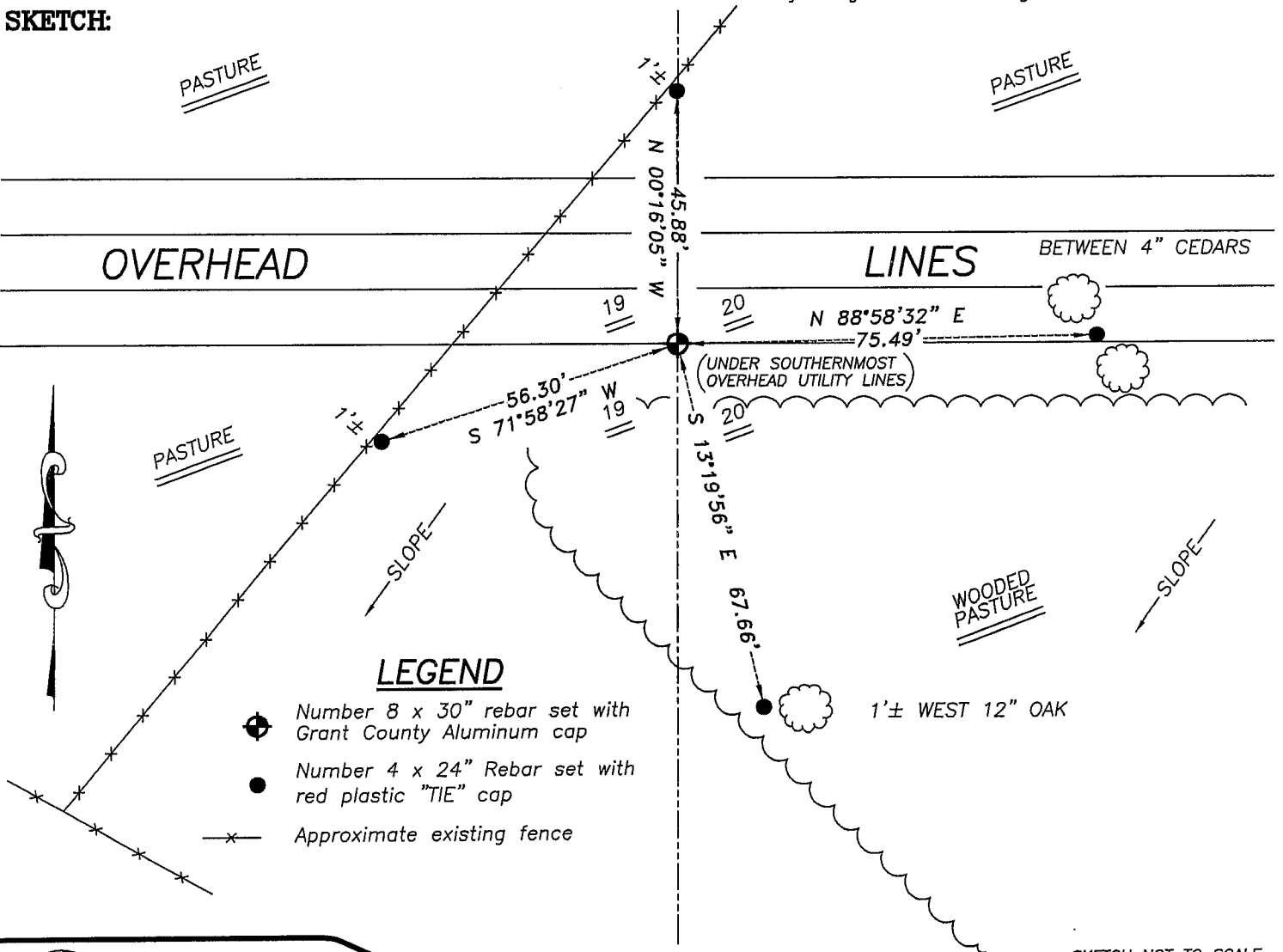
Corner was originally set in 1833 by Clark. In 1845 Stuntz tied to the original corner. In 1881 Scott tied to the corner with new bearing trees after finding remains of former ones. No other record of the corner was found.

DESCRIPTION OF CORNER EVIDENCE FOUND

No evidence of the original or subsequent surveys was found. I reset the corner proportionately and on-line between the Northwest and Southwest corners of Section 20. Verified this location using EDM & GPS methods.

DESCRIPTION OF CORNER AND WITNESS MONUMENTS, references and accessories used to perpetuate the original or re-established location of this corner. Witnesses to corner location Bobby Sedgwick & Brad Digman & Shane Austin

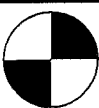
SKETCH:



LEGEND

- Number 8 x 30" rebar set with Grant County Aluminum cap
- Number 4 x 24" Rebar set with red plastic "TIE" cap
- x- Approximate existing fence

SKETCH NOT TO SCALE



Austin Engineering LLC

4211 HWY 81 E, LANCASTER, WI 53813
 PHONE 608-723-6363 FAX 608-723-6702

JOB NUMBER 07S092
 FIELDBOOK: TDSR, 2700
 G:\T3NR3W\34GCC
 H:\TIE\T3NR3W\75

DRAWN BY: SW AUSTIN
 APPROVED: LL AUSTIN