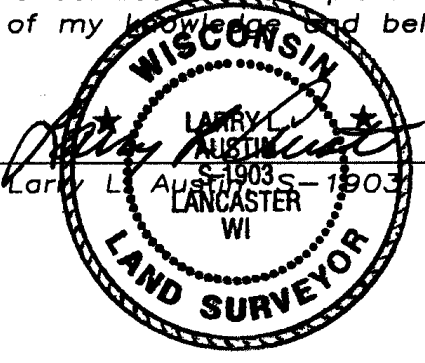


U.S. PUBLIC LAND SURVEY MONUMENT RECORD

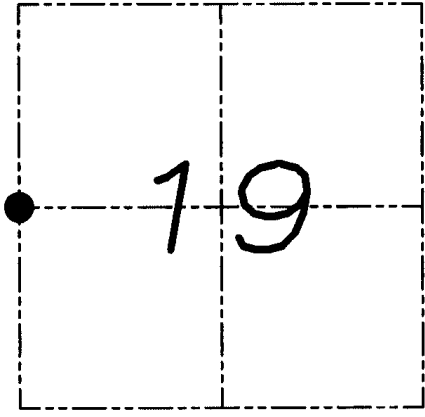
Section 19, Town 3 North Range 3 West, Town of Potosi, Grant County, Wisconsin

CERTIFICATE

I, Larry L. Austin, do hereby certify that the corner location on this record was determined by me and/or under my direct supervision and that this U.S. public land survey monument record is correct and complete to the best of my knowledge and belief.



9.08.08
date



● = CORNER LOCATION

HISTORY OF CORNER

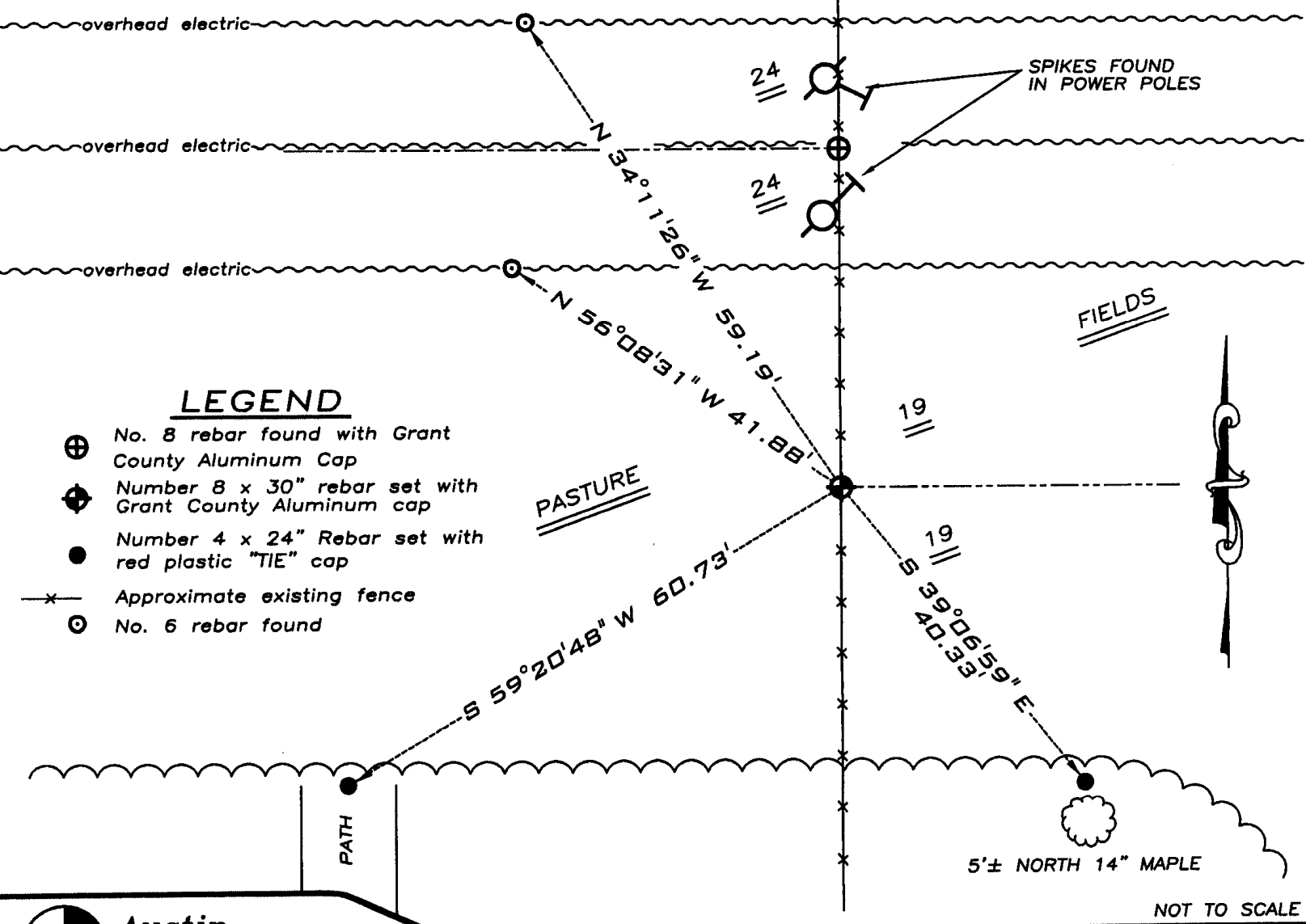
Corner was never originally set.
No recent record of the corner was found.

CORNER EVIDENCE FOUND

I set the corner at the proportioned offset from the East 1/4 of Section 24, T3N R4W. Verified this location using EDM & GPS methods.

DESCRIPTION OF CORNER AND WITNESS MONUMENTS, references and accessories used to perpetuate the original or re-established location of this corner. Witnesses to monument location Bobby Sedgwick & Brad Digman & Shane Austin

SKETCH:



LEGEND

- ⊕ No. 8 rebar found with Grant County Aluminum Cap
- ⊕ Number 8 x 30" rebar set with Grant County Aluminum cap
- Number 4 x 24" Rebar set with red plastic "TIE" cap
- x- Approximate existing fence
- ⊙ No. 6 rebar found



NOT TO SCALE

Austin Engineering LLC
4211 HWY 81 E, LANCASTER, WI 53813
PHONE 608-723-6363 FAX 608-723-6702

JOB NUMBER 08S151
FIELDBOOK: TDSR, 28-10
G:\T3NR3W\T3NR3W
H:\TIE\T3NR3W\74

DRAWN BY: SW AUSTIN
APPROVED: LL AUSTIN