

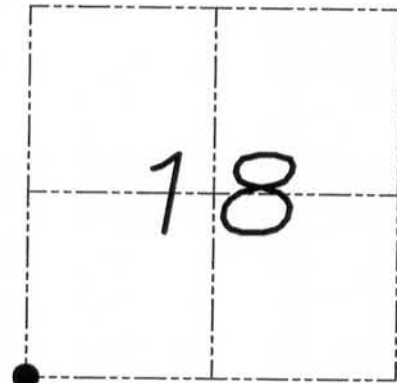
U.S. PUBLIC LAND SURVEY MONUMENT RECORD

Section 18, Town 3 North Range 3 West, Town of Potosi, Grant County, Wisconsin

CERTIFICATE

I, Larry L. Austin, do hereby certify that the corner location on this record was determined by me and/or under my direct supervision and that this U.S. public land survey monument record is correct and complete to the best of my knowledge and belief.

Larry L. Austin
Larry L. Austin, S-1903



HISTORY OF CORNER

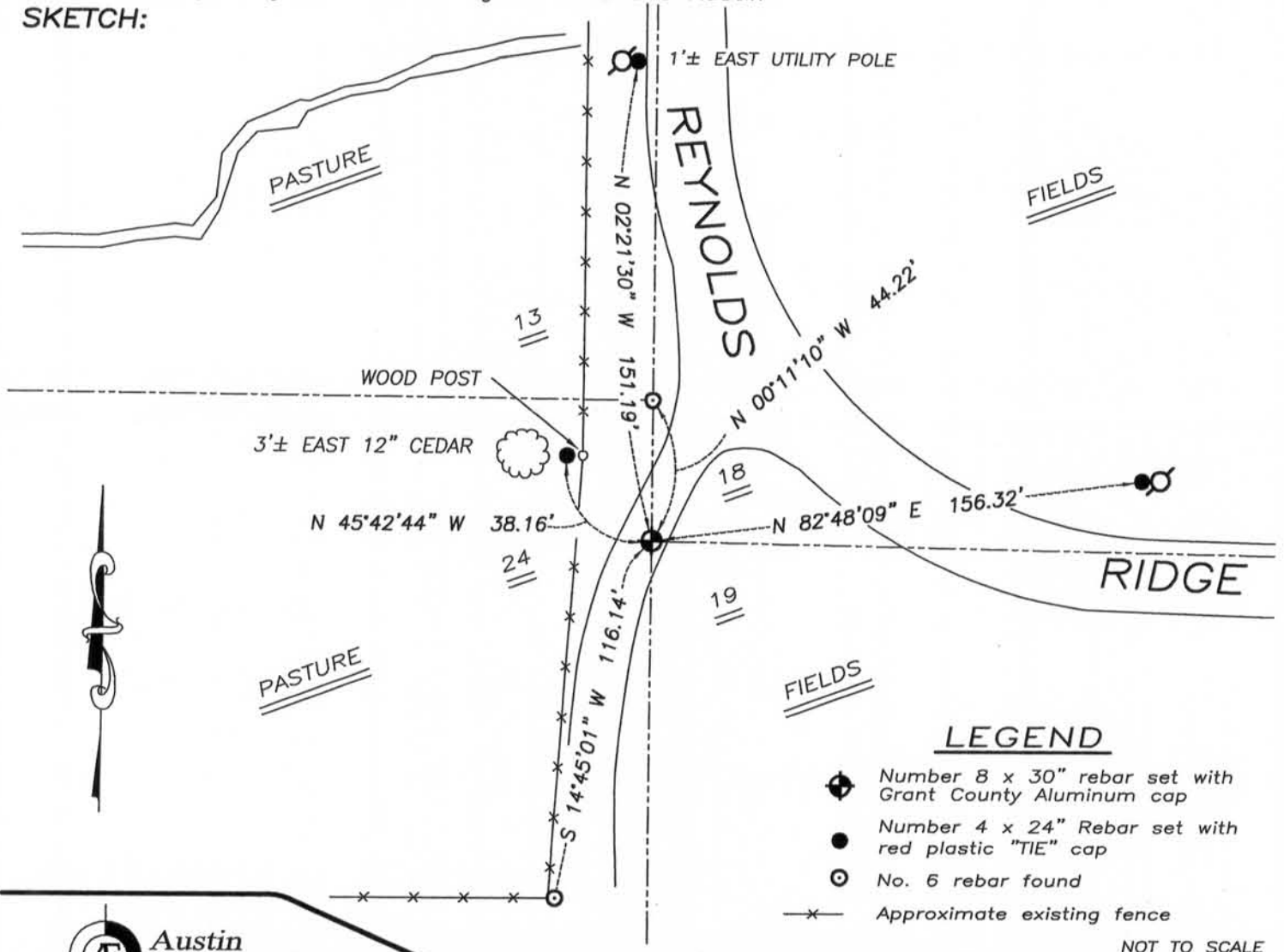
Corner was originally set in 1832 by Robert Clark. No other record of the corner was found.

CORNER EVIDENCE FOUND

I set the corner at the recorded offset from the Southeast Corner of Section 13, T3N R4W. Verified this location using EDM & GPS methods.

DESCRIPTION OF CORNER AND WITNESS MONUMENTS, references and accessories used to perpetuate the original or re-established location of this corner. Witnesses to monument location Bobby Sedgwick & Brad Digman & Shane Austin

SKETCH:



LEGEND

- ⊕ Number 8 x 30" rebar set with Grant County Aluminum cap
- Number 4 x 24" Rebar set with red plastic "TIE" cap
- No. 6 rebar found
- x- Approximate existing fence

NOT TO SCALE

Austin Engineering LLC
austinengineeringllc.com
4211 HWY 81 E, LANCASTER, WI 53813
PHONE: 608-723-6363 FAX: 608-723-6702

JOB NUMBER 07S114-EDGE
FIELDBOOK: TDSR, 10-01
G:\T3NR3W\T3NR3W
H:\TIE\T3NR3W\73

DRAWN BY: SW AUSTIN
APPROVED: AJ AUSTIN