

RECEIVED MAR 26 1999

GRANT COUNTY CERTIFIED LAND CORNER

CORNER NO. 72

CERTIFICATE:

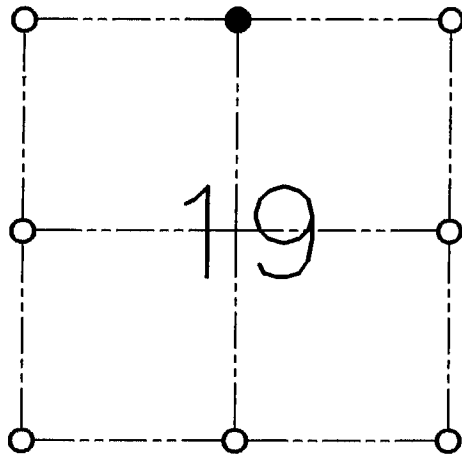
I, LARRY L. AUSTIN, DO HEREBY CERTIFY THAT ON SEVENTEENTH DAY OF NOVEMBER, 1998, I FOUND OCCUPATIONAL EVIDENCE OF THE NORTH 1/4 OF SECTION 19, TOWN 3 NORTH, RANGE 3 WEST, OF THE FOURTH PRINCIPAL MERIDIAN, AND I RE-ESTABLISHED SAID CORNER ACCORDING TO THE WISCONSIN STATUTES AS SHOWN AND DESCRIBED HEREON.

DATED THIS SEVENTEENTH DAY OF DECEMBER, 1998

Larry L. Austin
LARRY L. AUSTIN S-1903



SEAL



● = CORNER LOCATION

NORTH 1/4 OF SECTION 19
T 3 N R 3 W
TOWN OF POTOSI

HISTORY OF ORIGINAL CORNER ESTABLISHMENT:

CORNER WAS SET IN 1833 BY ROBERT CLARK.

DESCRIPTION OF CORNER EVIDENCE FOUND:

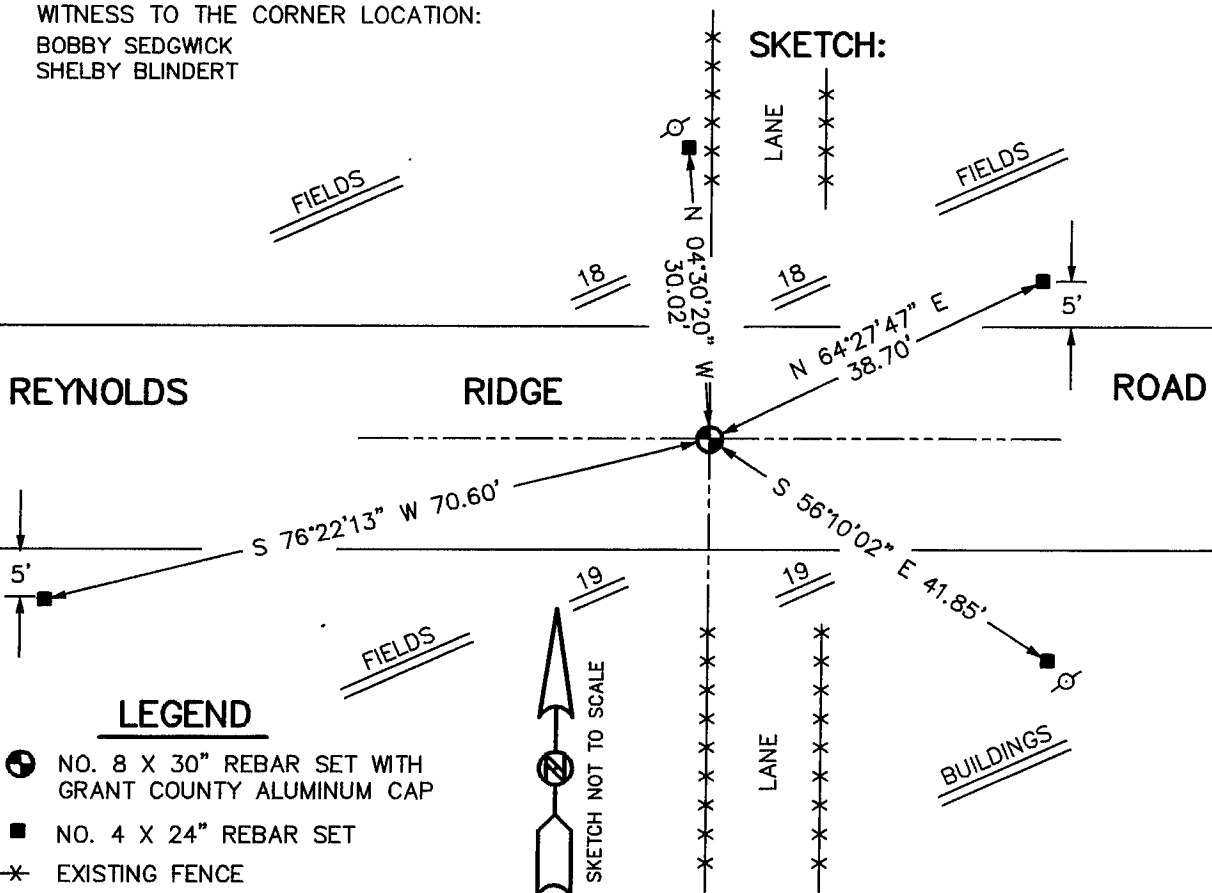
I FOUND OCCUPATIONAL EVIDENCE AT THIS LOCATION.
VERIFIED THIS LOCATION USING E.D.M. AND G.P.S. METHODS.

DESCRIPTION OF CORNER AND WITNESS MONUMENTS, REFERENCES AND ACCESSORIES USED TO PERPETUATE THE ORIGINAL OR RE-ESTABLISHED LOCATION OF THIS CORNER:

WITNESS TO THE CORNER LOCATION:

BOBBY SEDGWICK
SHELBY BLINDERT

SKETCH:



LEGEND

- NO. 8 X 30" REBAR SET WITH GRANT COUNTY ALUMINUM CAP
- NO. 4 X 24" REBAR SET
- *- EXISTING FENCE
- ⊙ UTILITY POLE