

U.S. PUBLIC LAND SURVEY MONUMENT RECORD - GRANT COUNTY, WI

Section 17, Town 3 North Range 3 West, Town of Potosi (a)

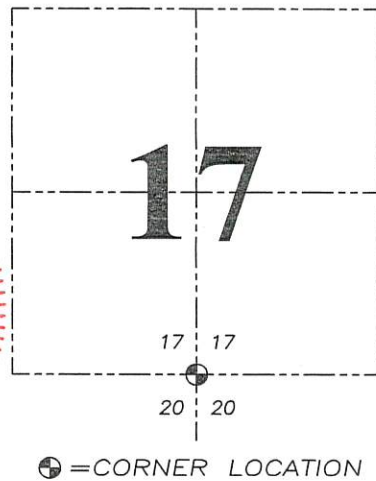
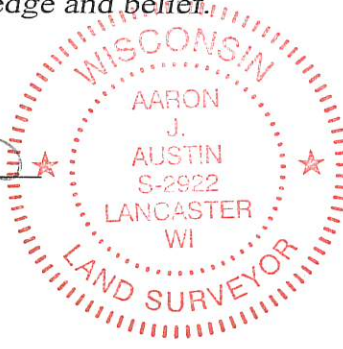
NOTE: This form is intended and designed to fulfill all requirements of the Wisconsin Administrative Code Chapter A-E 7.08, U.S. Public Land Survey Monument Record (3) (a) (b) (c) (d) (e) (f) (g) (h) (i).

CERTIFICATE: (i)

I, Aaron J. Austin, Wisconsin Professional Land Surveyor, do hereby certify that the corner location on this record was determined by me and/or under my direct supervision and that this U.S. Public Land Survey Monument Record is correct and complete to the best of my knowledge and belief.

Dated this 28th day of June, 2019.

Aaron J. Austin
Aaron J. Austin, S-2922



Grant County Coordinates:
NAD 83 (2011)
Northing: 479,057.22
Easting: 808,156.29

HISTORY OF CORNER ESTABLISHMENT:

Original corner was set in 1833 by Clark.
Terrance Genske reestablished the corner Prepared a Survey Monument Record dated 2/28/84.

DESCRIPTION OF CORNER EVIDENCE FOUND: (b) (f) (g) (h)

I found the 24" cedar tree Genske used as the monument. Corner location was determined from the three witness corners found as set by Genske. I set one additional witness corner after I verified it's location with with G.P.S. and E.D.M. methods.

DESCRIPTION OF CORNER AND WITNESS MONUMENTS. references and accessories used to perpetuate the original or re-established location of this corner. (c) (d) (e)

Witnesses to corner location Shane Austin.
Drawn by: Owen Austin

SKETCH:

LEGEND

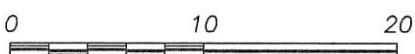
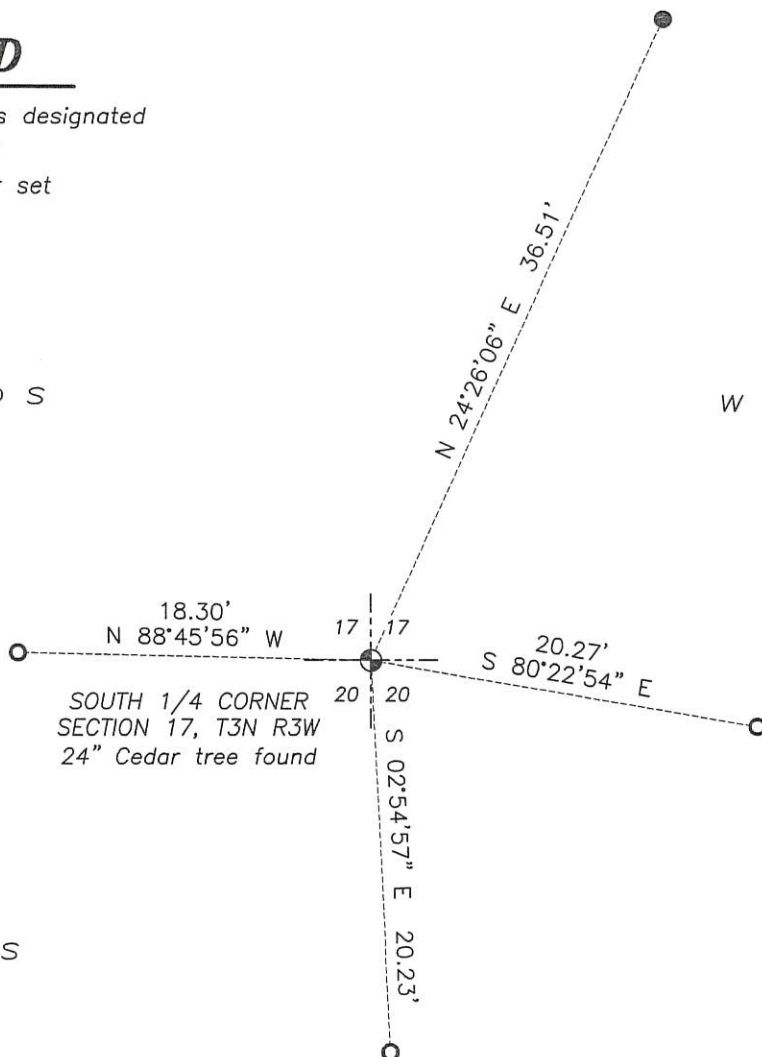
- ⊕ Section Corner—as designated
- 3/4" rebar found
- 3/4" x 18" rebar set
- x-x-x- Existing fence

W O O D S

W O O D S

W O O D S

W O O D S



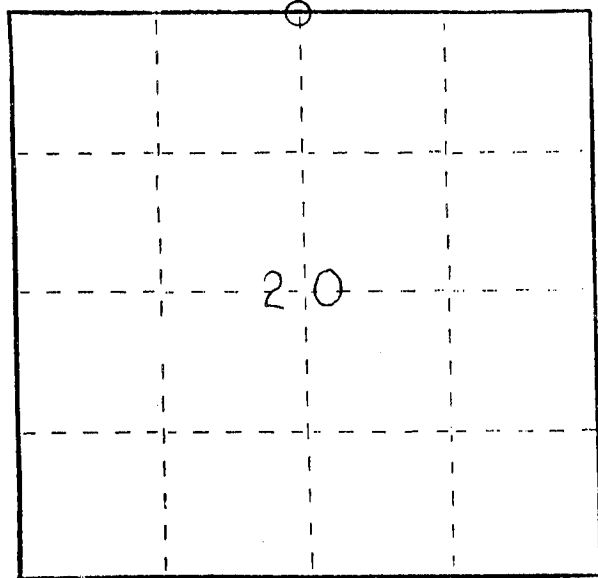
SCALE 1" = 10'

U. S. PUBLIC LAND SURVEY MONUMENT RECORD

INSTRUCTIONS: This record shall show the location of the corner and shall include all of the following nine elements (a through i).

- (a) Identify the corner by reference to the U.S. public land survey system.
 ○ = Corner monument restored.

North 1/4 Corner, Section 20
 Town 3 North, Range 3 West

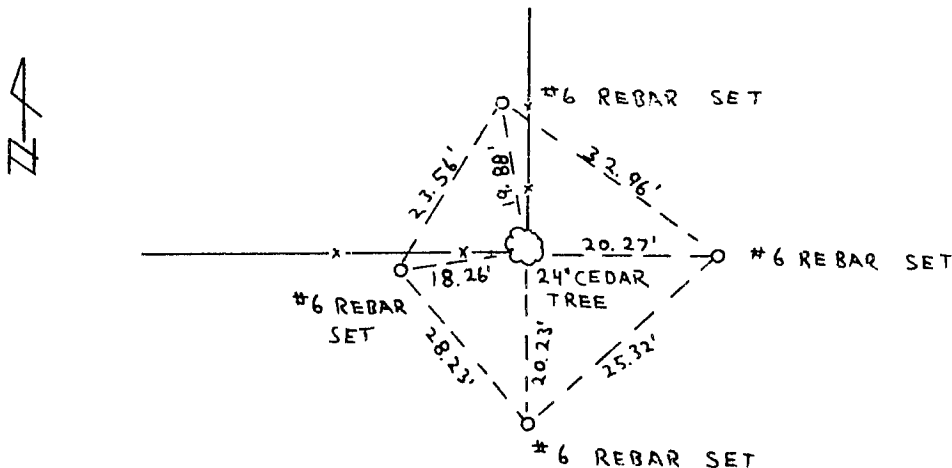


- (b) Describe any record evidence, monument evidence, occupational evidence, testimonial evidence or any other material evidence you considered, and whether the monument was found or placed.

We used aerial photographs to approximate our search area, after discovering no relevant information on file in Lancaster. A field traverse was performed tying in existing evidence at many existing fence corners in the area and the closest monument available, an uncalled for iron at the Northeast corner of 20. A relatively ancient fenceline bisects the 24" cedar tree and also bears North from it. One of the adjacent land owners met us at the tree and claimed that years ago when he purchased his farm, he was told the tree marked the corner and he and his neighbors have accepted it as such in harmony. The corner measured 2643.3'+/- from said Northeast corner.

- (c) In the plan view drawing below, provide reference ties to at least 4 witness monuments, or, if the location is within a municipality, to at least 2 witness monuments. (Witness monuments shall be made of concrete, natural stone, iron or other equally durable material.)
 Describe witness monuments.

- (d) Show a plan view drawing depicting the relevant monuments and reference ties which is sufficient in detail to enable accurate relocation of the corner monument if the corner monument is disturbed. Indicate north.



MAR 5 1984
 N.T.S.

- (e) Describe any material discrepancy between the location of the corner as restored or reestablished and the location of that corner as previously restored or reestablished by distance and direction. Show the discrepancy on the plan view drawing under (d), above. Show the distances between the corner as previously restored or reestablished and (1) the corner as restored or reestablished, and (2) to at least 2 of the witness monuments shown on the drawing in (d), above.

The corner has never been reestablished or referenced in a survey in the survey records of Grant County since the original corner was set around 1833.

- (f) Was the corner restored through acceptance of (1) an obliterated evidence location, or, (2) a found perpetuated location?

(1) Accepted the obliterated evidence at the site of the corner.

- (g&h) Was the corner reestablished through lost corner proportionate methods? If so, show the method, including the directions and distances to other public land survey corners used as evidence or used for proportioning in determining the corner location?

--

Terrance L. Genske

- (i) I, Terrance L. Genske
(type or print name) certify that the corner location shown on this record was determined by me or under my direction and control and that this U.S. Public Land Survey Monument Record is correct and complete to the best of my knowledge and belief.

Signature

BARRIENTOS & ASSOC., INC.

2/28/84

Date

