

U.S. PUBLIC LAND SURVEY MONUMENT RECORD - GRANT COUNTY, WI

Section 15, Town 3 North Range 3 West, Town of Potosi (a)

NOTE: This form is intended and designed to fulfill all requirements of the Wisconsin Administrative Code Chapter A-E 7.08, U.S. Public Land Survey Monument Record (3) (a) (b) (c) (d) (e) (f) (g) (h) (i).

CERTIFICATE: (i)

I, Aaron J. Austin, Wisconsin Professional Land Surveyor, do hereby certify that the corner location on this record was determined by me and/or under my direct supervision and that this U.S. Public Land Survey Monument Record is correct and complete to the best of my knowledge and belief.

Dated this 23th day of November, 2021.

Aaron J Austin
Aaron J. Austin, S-2922



Grant County Coordinates:
NAD 83 (2011)
Northing: 479,157.80
Easting: 816,119.62

HISTORY OF CORNER ESTABLISHMENT:

Original corner was set in 1833 by Robert Clark.
David Davis set a 1 1/4" Rebar and prepared a Survey Monument Record dated 9/22/1981.

DESCRIPTION OF CORNER EVIDENCE FOUND: (b) (f) (g) (h)

I found the 1 1/4" Rebar Davis set (buried 18"±). I set a 1/2" x 4 3/4" Steel Gin Spike at the surface of the blacktop. I set four witness corners after I verified the Monument's location with G.P.S. and E.D.M. methods.

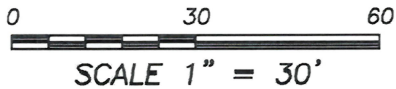
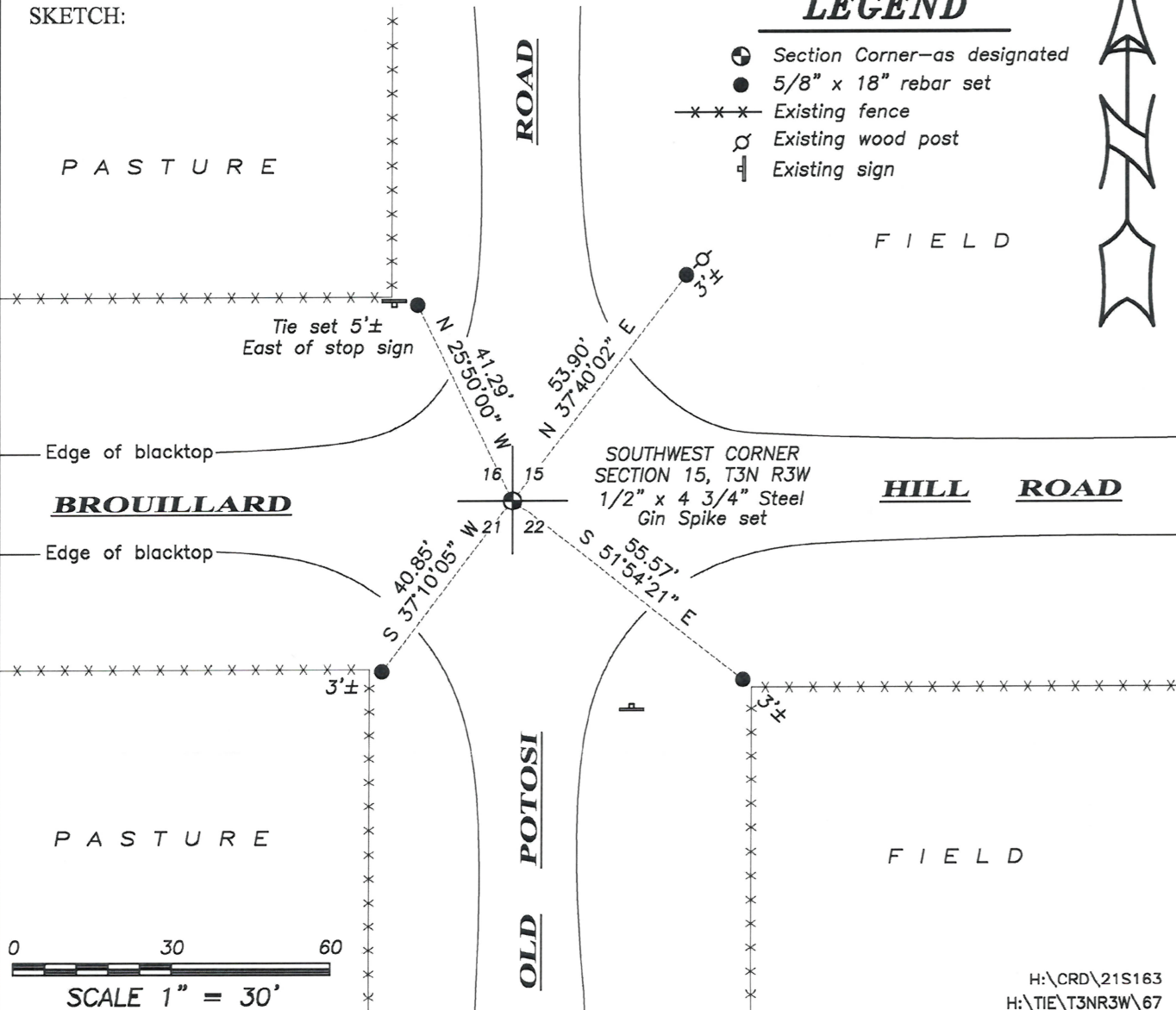
DESCRIPTION OF CORNER AND WITNESS MONUMENTS, references and accessories used to perpetuate the original or re-established location of this corner. (c) (d) (e)

Witnesses to corner location Owen Austin, Tanner Austin.
Drawn by Owen Austin

SKETCH:

LEGEND

- Section Corner—as designated
- 5/8" x 18" rebar set
- Existing fence
- Existing wood post
- Existing sign



CERTIFIED LAND CORNER

STATE OF WISCONSIN)
 COUNTY OF GRANT) S.S.

CERTIFICATE

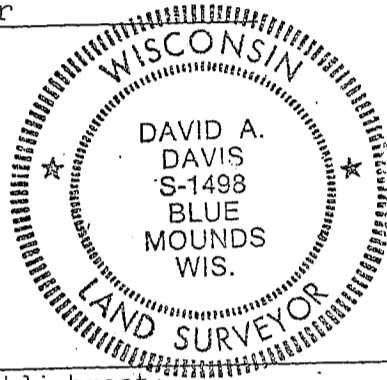
I, David A. Davis, do hereby certify that on the day of December 1980, I found (evidence) ~~(no evidence)~~ of the Northeast corner of Section 21, T 3 N, R 3 W, Fourth Principal Meridian, and I re-established said corner according to the Wisconsin Statutes as shown and described hereon.

Dated this 22 day of September 1981

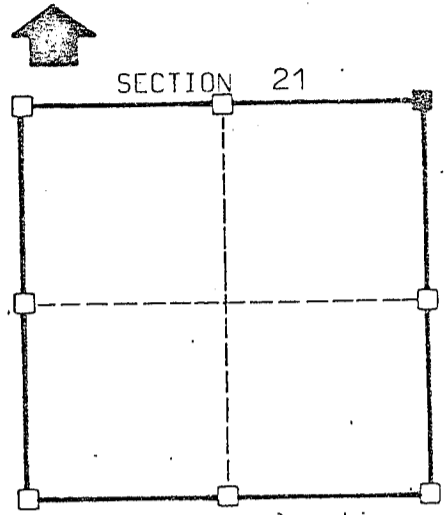
David A. Davis
 Registered land surveyor

Title

SOUTHWEST ENGINEERING, INC.
 206 S. Iowa Street
 DODGEVILLE, WIS. 53533



Seal



■ = corner location

T 3 N R 3 W

Town of: Potosi

History of original corner establishment:

1871 survey by Geo. McFall found original corner.

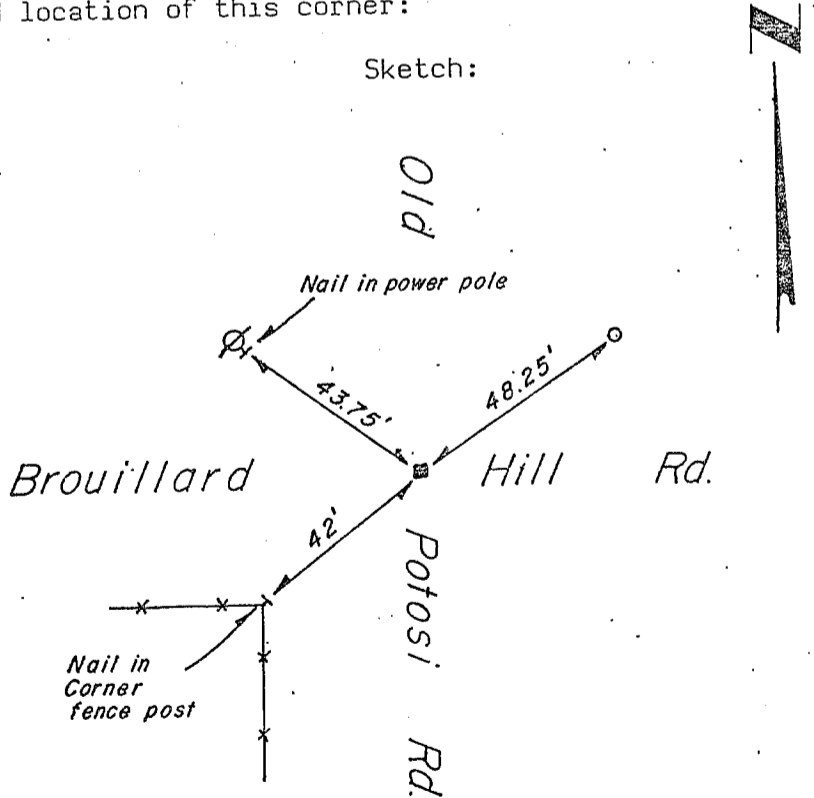
Description of corner evidence found:

Accepted the travelled centerlines of Old Potosi Rd. & Brouillard Rd. intersection of

Description of corner and witness monuments, references and accessories used to perpetuate the original or re-established location of this corner:

Witnesses to corner location:

Sketch:



Legend

- ⊙ Power pole
- x—x— Fence line
- 2" ∅ Iron pipe set
- No. 10 (1-1/4" ∅) Rebar

SURVEY CONTROL ORDER

Horizontal	
Vertical	
Control Station Name	

WISCONSIN COORDINATE SYSTEM

East (X)

North (Y)

Elevation (Z)

Zone