

U.S. PUBLIC LAND SURVEY MONUMENT RECORD - GRANT COUNTY, WI

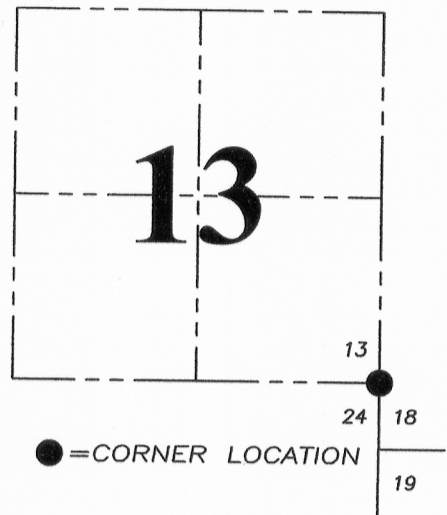
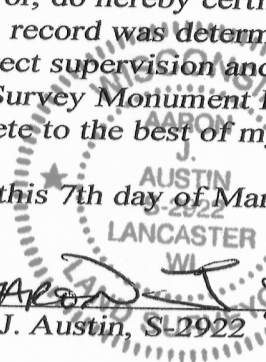
Section 13, Town 3 North Range 3 West, Town of Potosi

CERTIFICATE:

I, Aaron J. Austin, Wisconsin Professional Land Surveyor, do hereby certify that the corner location on this record was determined by me and/or under my direct supervision and that this U.S. Public Land Survey Monument Record is correct and complete to the best of my knowledge and belief.

Dated this 7th day of March, 2016.

Aaron J. Austin
 Aaron J. Austin, S-2922



HISTORY OF CORNER ESTABLISHMENT:

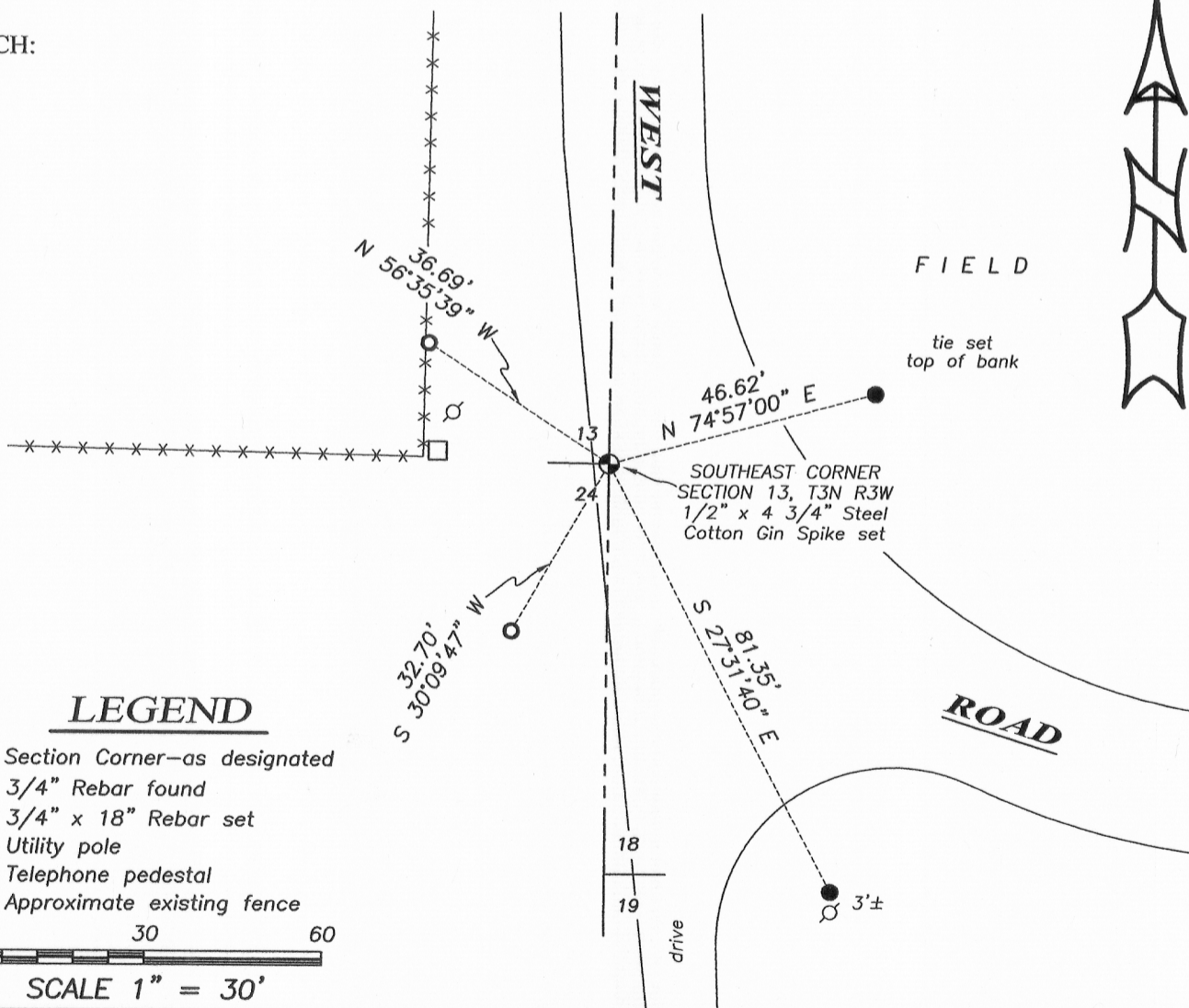
1832-Lucius Lyon set original corner.
 2000-Larry Austin reset the corner and prepared a Certified Land Corner Record.

DESCRIPTION OF CORNER EVIDENCE FOUND:

I found 2 existing ties and a faint metal detector reading at the corner location. I set a 1/2" x 4 3/4" Steel Cotton Gin Spike at the surface of the road and set 2 additional witness corners, after I verified it's location with E.D.M. and G.P.S. methods.

DESCRIPTION OF CORNER AND WITNESS MONUMENTS, references and accessories used to perpetuate the original or re-established location of this corner. Witnesses to corner location Shane Austin.

SKETCH:



LEGEND

- ⊕ Section Corner—as designated
- 3/4" Rebar found
- 3/4" x 18" Rebar set
- ⊙ Utility pole
- Telephone pedestal
- x-x- Approximate existing fence

0 30 60
 SCALE 1" = 30'



Austin Engineering LLC
 austinengineeringllc.com

4211 HWY 81 E, LANCASTER, WI 53813
 PHONE: 608-723-6363 FAX: 608-723-6702

JOB NO: 16S018
 H:CRD\16S018
 H:\TIE\T3NR3W\61(B)

FIELDBOOK: TDSR
 DRAWN BY: AJ AUSTIN
 CREW: SW AUSTIN

MAR 07 2016