

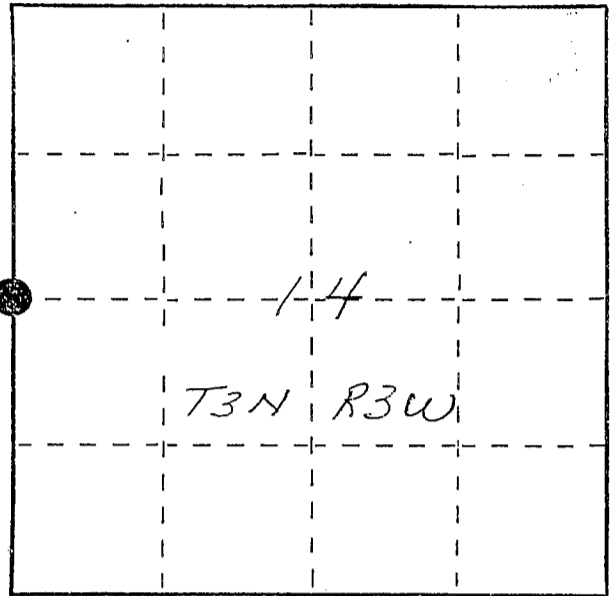
# U. S. PUBLIC LAND SURVEY MONUMENT RECORD

**INSTRUCTIONS:** This record shall show the location of the corner and shall include all of the following nine elements (a through i).

(a) Identify the corner by reference to the U.S. public land survey system.

● = Corner monument restored.

N 1/4 corner section 14  
T3N R3W of the  
4th P.M.  
Town of Potasi  
Grant County, Wisconsin



**APR 27 1988**

MAY - 1988

(b) Describe any record evidence, monument evidence, occupational evidence, testimonial evidence or any other material evidence you considered, and whether the monument was found or placed.

No evidence could be found. Distance to SW corner 14 is long but distance to NW corner (stone found) is good. Held E E intersection and set monument there.

(c) In the plan view drawing below, provide reference ties to at least 4 witness monuments, or, if the location is within a municipality, to at least 2 witness monuments. (Witness monuments shall be made of concrete, natural stone, iron or other equally durable material, ~~except wood.~~) Describe witness monuments.

(d) Show a plan view drawing depicting the relevant monuments and reference ties which is sufficient in detail to enable accurate relocation of the corner monument if the corner monument is disturbed. Indicate north.

No Scale  
Bearings - Wis. Grid.

- Berntsen A-1 mon. set 6" below road surface.
- Ref. mon. - 3/4" x 24" rebar w/cap.

