

Wisconsin Department of Safety and Professional Services

Mail To: P.O. Box 8935
Madison, WI 53708-8935
Phone #: (608) 266-2112

Office Location: 4822 Madison Yards Way
Madison, WI 53705
Email: dsps@wisconsin.gov
Website: <http://dsps.wi.gov>

EXAMINING BOARD OF ARCHITECTS, LANDSCAPE ARCHITECTS, PROFESSIONAL ENGINEERS, DESIGNERS, PROFESSIONAL LAND SURVEYORS, AND REGISTERED INTERIOR DESIGNERS

PROFESSIONAL LAND SURVEYOR SECTION

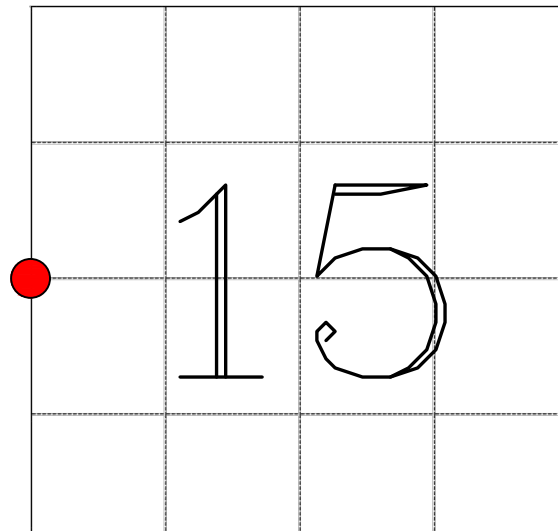
U.S. PUBLIC LAND SURVEY MONUMENT RECORD

INSTRUCTIONS: Per [Wis. Admin. Code § A-E 7.08](#), a U.S. public land survey monument record shall be prepared and filed with the county survey records as part of any land survey within 60 days of setting or accepting the corner which includes or requires the perpetuation, restoration, or use of a U.S. public land survey corner and when any of the situations in Wis. Admin. Code § A-E 7.08(1)(a), 7.08(1)(b) or 7.08(1)(c) arise.

Surveyor's Last Name ELSBREE	First Name BRANNON	MI D.	Credential Number 3230-8
Address (street, city, state, zip code) 1250 E DIEHL RD, STE 300, NAPERVILLE, IL 60563			Project ID 19004082

Identify the corner, as referenced to the U.S. public land survey system.

O = corner monument restored



T.3N | R.3W

Describe any record of evidence, monument evidence, occupational evidence, testimonial evidence or any other material evidence considered by the Professional Land Surveyor, and whether the monument was found or placed. (Attach additional sheets if necessary.)

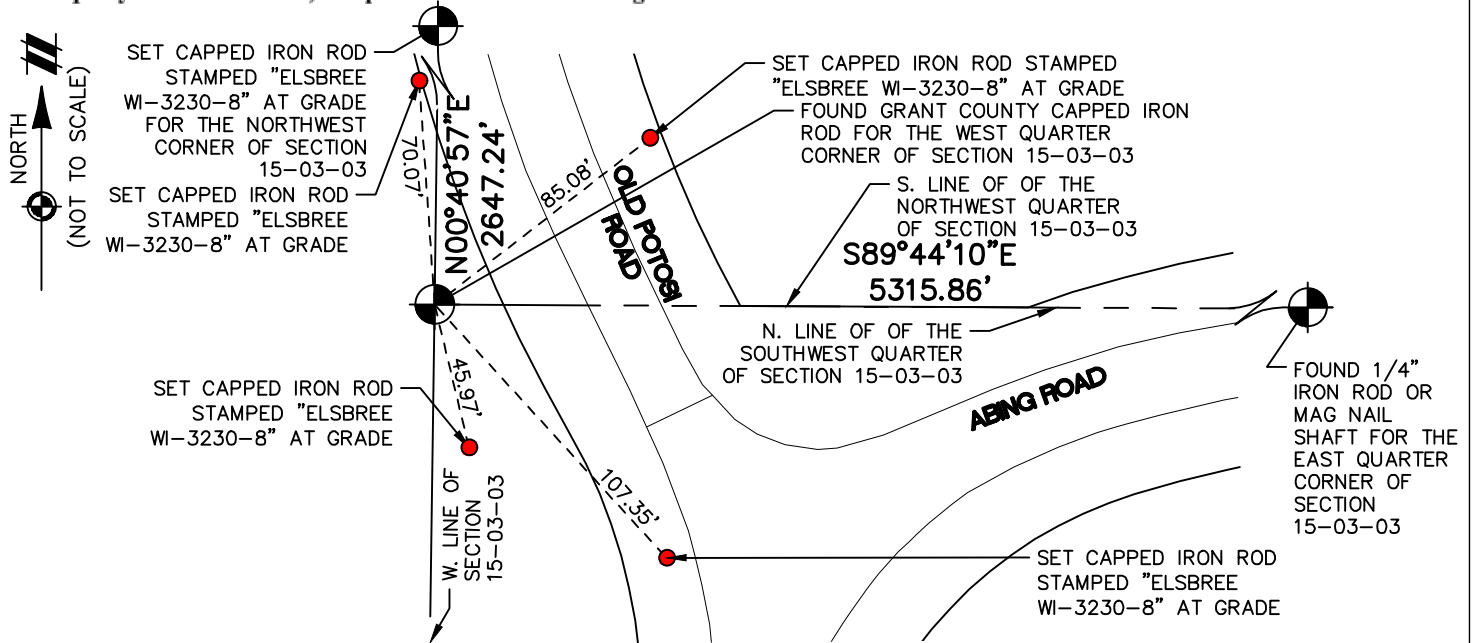
A SURVEY FOR PATRICK CASHMAN AND ROBERT ROPS, BY SAMUEL SOWRY,
DATED SEPTEMBER 7TH, 1854, AND RECORDED DECEMBER 28TH, 1854, PAGE 133
MENTIONS A QUARTER SECTION POST FOR THE WEST QUARTER CORNER OF SECTION 15.
NO FIELD EVIDENCE WAS FOUND,

Wisconsin Department of Safety and Professional Services

Document a plan view drawing below.

- Depict the relevant monuments and reference ties, which is sufficient in detail to enable accurate relocation of the corner monument if the corner monument is disturbed.

- Provide reference ties to at least four (4) witness monuments. Witness monuments shall be concrete, natural stone, iron, bearing trees, or other equally durable material, except wood other than bearing trees.



Describe any material discrepancy between the location of the corner monument as restored and the monument location of that corner as previously established.

NO PREVIOUS RECORD WAS FOUND. HELD OCCUPATIONAL EVIDENCE TO ESTABLISH CORNER (ROAD ALIGNMENT AND FENCE LINES) TO POSITION CORNER.

Was the corner:

- Restored through acceptance of an obliterated evidence location.
- A found perpetuated location.
- Determined through lost-corner-proportionate methods. Yes No

If Yes, show the method, including directions and distances to other public land survey corners, which were used as evidence or used for proportioning in determining corner location.

CERTIFICATION

I certify that the corner location shown on this record was determined by me or under my direction and control and that this U.S. Public Land Survey Monument Record (Form 3189) is correct and complete to the best of my knowledge and belief, in accordance with [Wis. Admin. Code § A-E 7.08](#).

Signature: *Brandon D. Elsbree*
 (If unable to provide a digital signature print and sign form.)

Date: 06 / 27 / 2023



U.S PUBLIC LAND SURVEY MONUMENT RECORD - GRANT COUNTY, WI

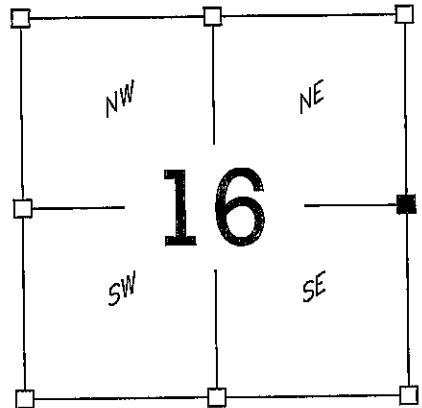
Section 16, Town Three North, Range Three West, Town of

Certificate

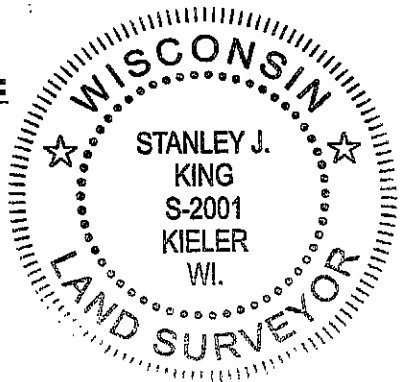
I, Stanley J. King, do hereby certify that the corner location on this record was determined by me and/ or under my direct supervision and that this U.S Public land survey monument record is correct and complete to the best of my knowledge and belief.

Dated this 16th day of May, 20 16

Stanley King
Professional Land Surveyor S-2001



Seal:



HISTORY OF CORNER ESTABLISHMENT:

Corner was originally set in the year 1832 by Robert Clark. In 1856 Overton tied to the corner while working in Section 15. In 1871 Mcfall also tied to the corner while working in Section 16. No other records were found.

CORNER OF CORNER EVIDENCE FOUND:

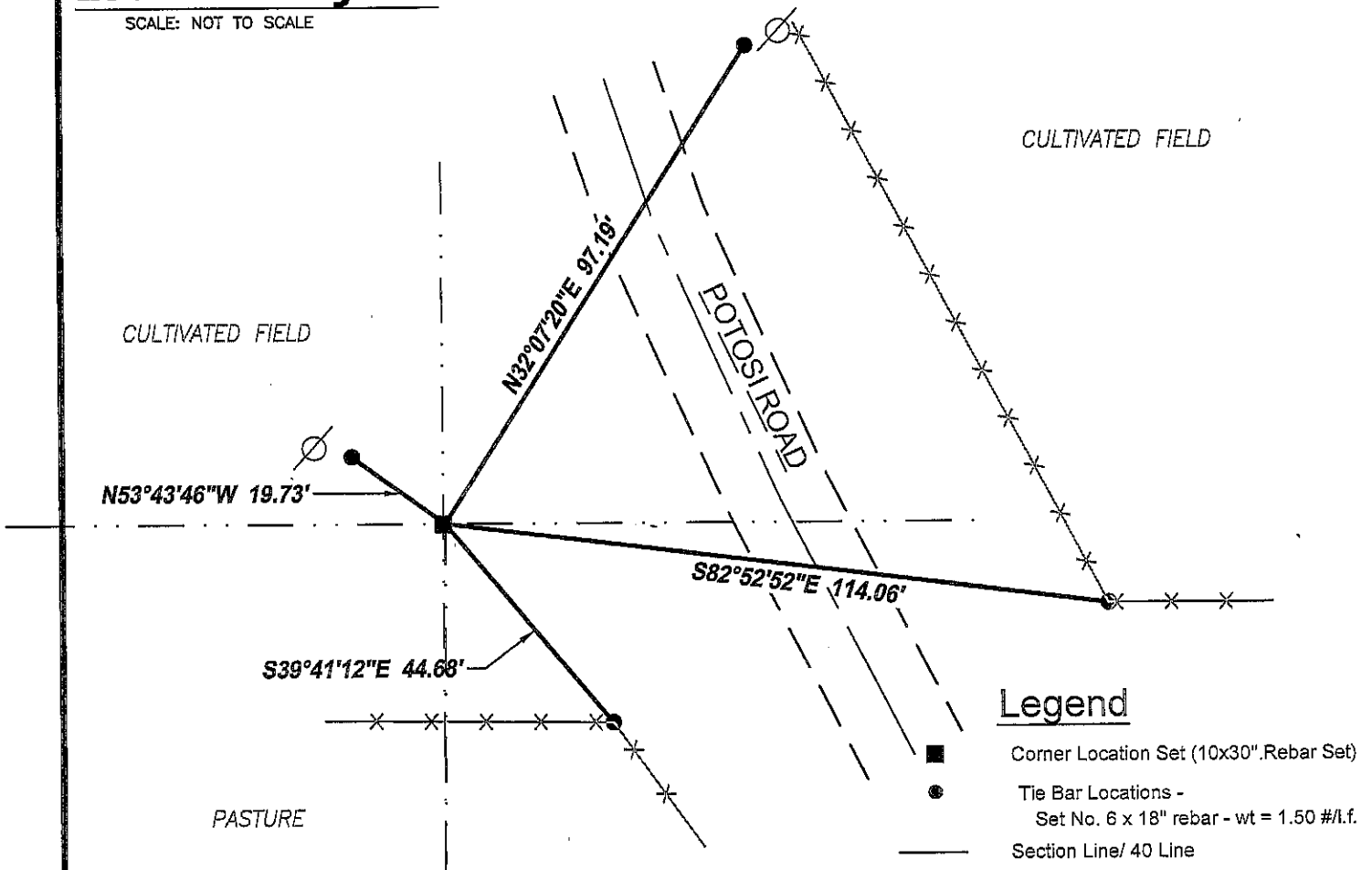
I reset the corner based on evidence of the both the Mcfall and the Overton Surveys. Verified this location to other adjoining occupied and monumented corners using GPS and EDM methods.

DESCRIPTION OF CORNER AND WITNESS MONUMENTS,

references and accessories used to perpetuate the original or re-established location of this corner. Witnesses to the corner location ROBERT SEDGWICK, and LUKE RUPP.

Location Diagram:

SCALE: NOT TO SCALE



Legend

- Corner Location Set (10x30\".Rebar Set)
- Tie Bar Locations -
Set No. 6 x 18\" rebar - wt = 1.50 #/l.f.
- Section Line/ 40 Line



**DELTA 3
ENGINEERING**
INC.

PROFESSIONAL CIVIL-MUNICIPAL & STRUCTURAL ENGINEERING • ARCHITECTURE
GRANT WRITING • LAND DEVELOPMENT • PLANNING & CADD SERVICES

DATE: 05-12-2016
DRAWN BY: R. SEDGWICK
APPROVED: S.King
SURVEY CREW: RS, LR
Data: G:\Projects\2016\D16-084 PLAT OF SURVEY.dwg
Drawing: G:\Projects\2016\D16-084\PLAT OF SURVEY.dwg

Grant County
Corner Number

JUN 16 2016