

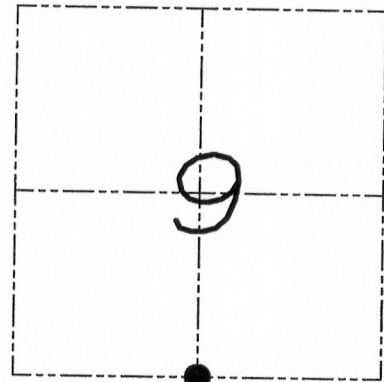
# U.S. PUBLIC LAND SURVEY MONUMENT RECORD

Section 9, Town 3 North Range 3 West, Town of Potosi, Grant County, Wisconsin

## CERTIFICATE

I, Aaron J. Austin, do hereby certify that the corner location on this record was determined by me and/or under my direct supervision and that this U.S. public land survey monument record is correct and complete to the best of my knowledge and belief.

*Aaron J. Austin*  
 Aaron J. Austin, S-2922  
 date 7-18-11  
 AARON J. AUSTIN  
 LAND SURVEYOR  
 LANCASTER, WI



● = CORNER LOCATION

## HISTORY OF CORNER

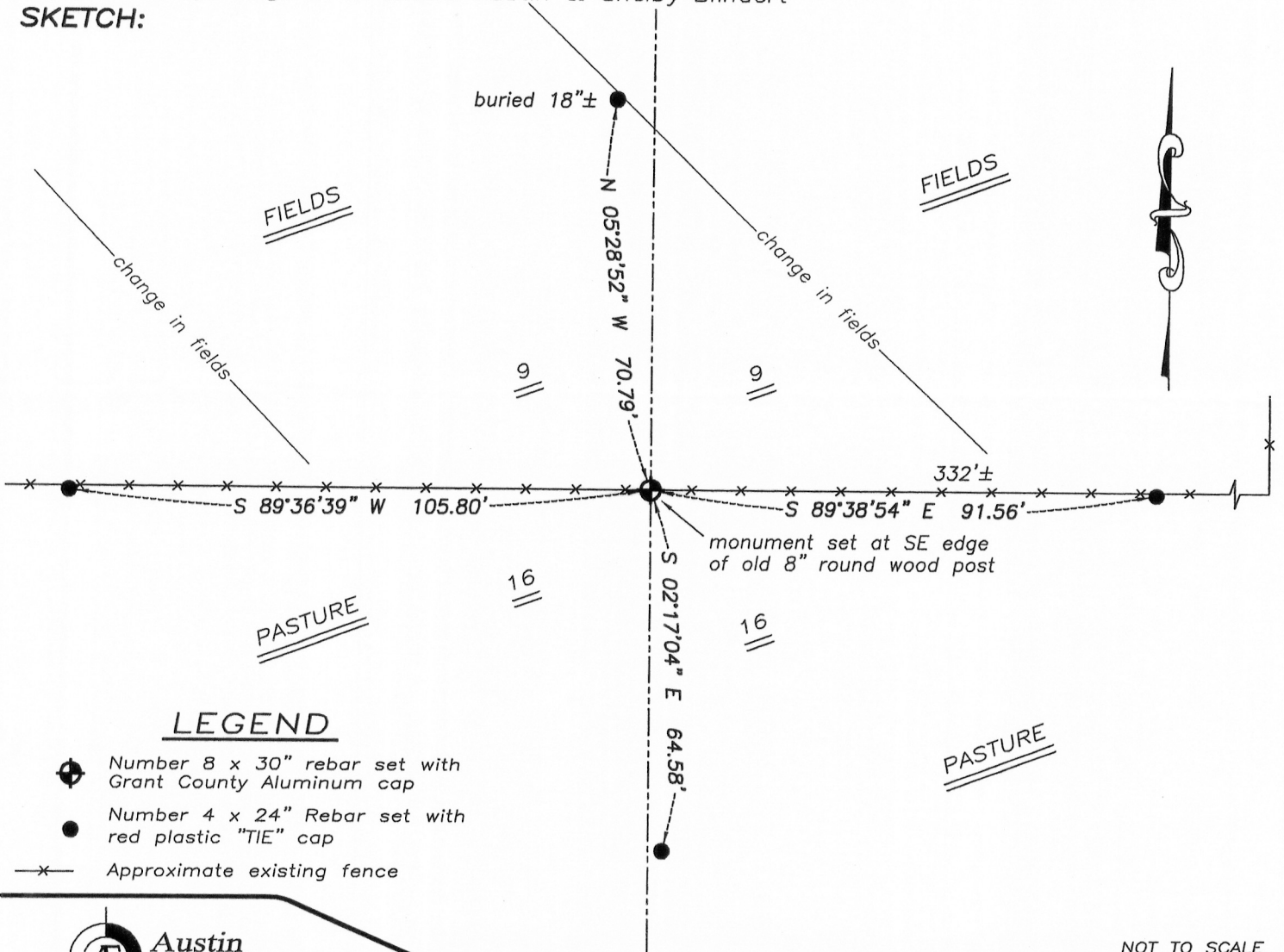
Corner was originally set by Robert Clark in 1833. Corner was measured to by Overton in 1855. No other record of the corner was found.

## CORNER EVIDENCE FOUND

I accepted the occupational location of an old post and verified this location by E.D.M. and G.P.S. methods.

DESCRIPTION OF CORNER AND WITNESS MONUMENTS, references and accessories used to perpetuate the original or re-established location of this corner. Witnesses to monument location Bobby Sedgwick & Shane Austin & Shelby Blindert

## SKETCH:



## LEGEND

- ⊕ Number 8 x 30" rebar set with Grant County Aluminum cap
- Number 4 x 24" Rebar set with red plastic "TIE" cap
- x- Approximate existing fence

NOT TO SCALE

**Austin Engineering LLC**  
 austinengineeringllc.com  
 4211 HWY 81 E, LANCASTER, WI 53813  
 PHONE: 608-723-6363 FAX: 608-723-6702

JOB NUMBER 11s053-PENNEKAMP  
 FIELDBOOK: TDSR, 10-05  
 G:\T3NR3W\T3NR3W  
 H:\TIE\T3NR3W\48

DRAWN BY: SW AUSTIN  
 APPROVED: AJ AUSTIN