

Wisconsin Department of Safety and Professional Services

Mail To: P.O. Box 8935
Madison, WI 53708-8935
Phone #: (608) 266-2112

Office Location: 4822 Madison Yards Way
Madison, WI 53705
Email: dsps@wisconsin.gov
Website: <http://dsps.wi.gov>

EXAMINING BOARD OF ARCHITECTS, LANDSCAPE ARCHITECTS, PROFESSIONAL ENGINEERS, DESIGNERS, PROFESSIONAL LAND SURVEYORS, AND REGISTERED INTERIOR DESIGNERS

PROFESSIONAL LAND SURVEYOR SECTION

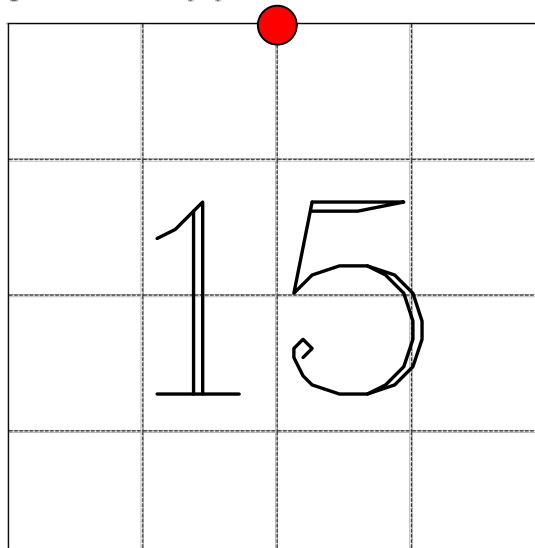
U.S. PUBLIC LAND SURVEY MONUMENT RECORD

INSTRUCTIONS: Per [Wis. Admin. Code § A-E 7.08](#), a U.S. public land survey monument record shall be prepared and filed with the county survey records as part of any land survey within 60 days of setting or accepting the corner which includes or requires the perpetuation, restoration, or use of a U.S. public land survey corner and when any of the situations in Wis. Admin. Code § A-E 7.08(1)(a), 7.08(1)(b) or 7.08(1)(c) arise.

Surveyor's Last Name ELSBREE	First Name BRANNON	MI D.	Credential Number 3230-8
Address (street, city, state, zip code) 1250 E DIEHL RD, STE 300, NAPERVILLE, IL 60563			Project ID 19004082

Identify the corner, as referenced to the U.S. public land survey system.

O = corner monument restored



T.3N | R.3W

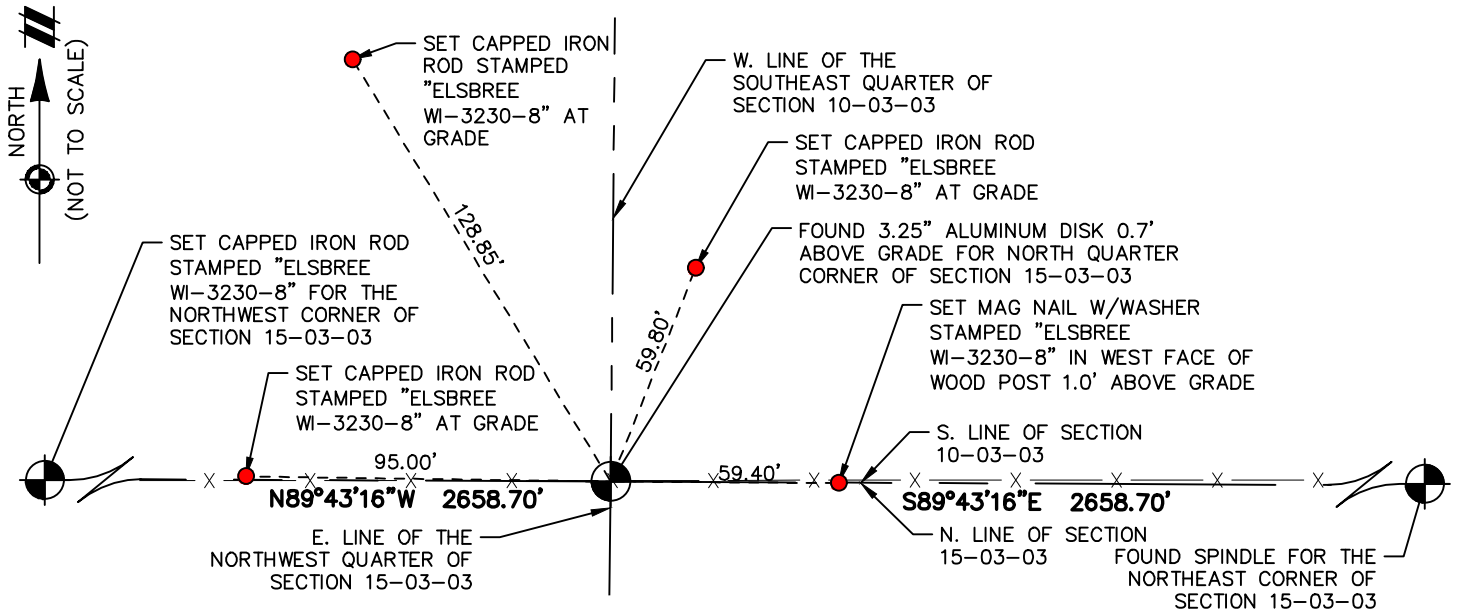
Describe any record of evidence, monument evidence, occupational evidence, testimonial evidence or any other material evidence considered by the Professional Land Surveyor, and whether the monument was found of placed. (Attach additional sheets if necessary.)

NO EVIDENCE FOUND.

Wisconsin Department of Safety and Professional Services

Document a plan view drawing below.

- Depict the relevant monuments and reference ties, which is sufficient in detail to enable accurate relocation of the corner monument if the corner monument is disturbed.
- Provide reference ties to at least four (4) witness monuments. Witness monuments shall be concrete, natural stone, iron, bearing trees, or other equally durable material, except wood other than bearing trees.



Describe any material discrepancy between the location of the corner monument as restored and the monument location of that corner as previously established.

NO PREVIOUS RECORD FOUND. ESTABLISHED MID-WAY AND ONLINE SINCE OCCUPATION

SUPPORTED THIS LOCATION.

Was the corner:

- Restored through acceptance of an obliterated evidence location.
- A found perpetuated location.
- Determined through lost-corner-proportionate methods. Yes No

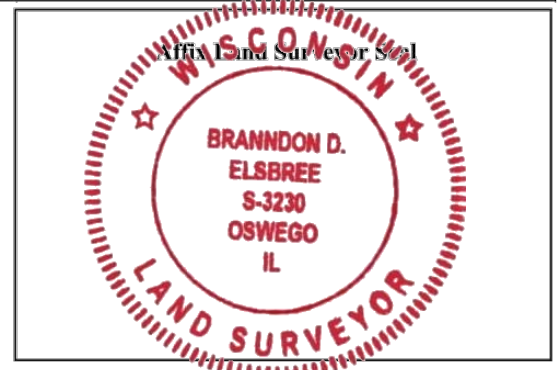
If Yes, show the method, including directions and distances to other public land survey corners, which were used as evidence or used for proportioning in determining corner location.

CERTIFICATION

I certify that the corner location shown on this record was determined by me or under my direction and control and that this U.S. Public Land Survey Monument Record (Form 3189) is correct and complete to the best of my knowledge and belief, in accordance with Wis. Admin. Code § A-E 7.08.

Signature: Brandon D. Elsbree
(If unable to provide a digital signature print and sign form.)

Date: 06 / 27 / 2023



U.S. PUBLIC LAND SURVEY MONUMENT RECORD - GRANT COUNTY, WI

Section 15, Town 3 North Range 3 West, Town of Potosi (a)

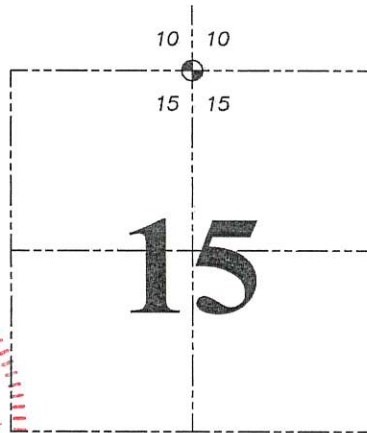
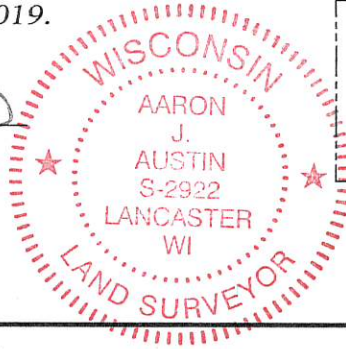
NOTE: This form is intended and designed to fulfill all requirements of the Wisconsin Administrative Code Chapter A-E 7.08, U.S. Public Land Survey Monument Record (3) (a) (b) (c) (d) (e) (f) (g) (h) (i).

CERTIFICATE: (i)

I, Aaron J. Austin, Wisconsin Professional Land Surveyor, do hereby certify that the corner location on this record was determined by me and/or under my direct supervision and that this U.S. Public Land Survey Monument Record is correct and complete to the best of my knowledge and belief.

Dated this 6th day of September, 2019.

Aaron J. Austin (signature)
Aaron J. Austin, S-2922



⊕ = CORNER LOCATION

Grant County Coordinates:

NAD 83 (2011)
Northing: 484,486.56
Easting: 818,796.15

HISTORY OF CORNER ESTABLISHMENT:

Robert Clark set the original corner in 1833.
Overton measured to the corner on a Survey dated 2-24-1856 filed in Book B, Page 468.

DESCRIPTION OF CORNER EVIDENCE FOUND: (b) (f) (g) (h)

Overton subdivided the Northeast 1/4 of Section 15 on the above referenced survey. I reset the corner in an occupied fence line East-West at a distance doubled over between the Northeast corner of Section 15 and the occupied fence corner for the Northwest corner of the NE 1/4 of the NE 1/4 which coincides with the Overton Survey.

DESCRIPTION OF CORNER AND WITNESS MONUMENTS, references and accessories used to perpetuate the original or re-established location of this corner. (c) (d) (e)

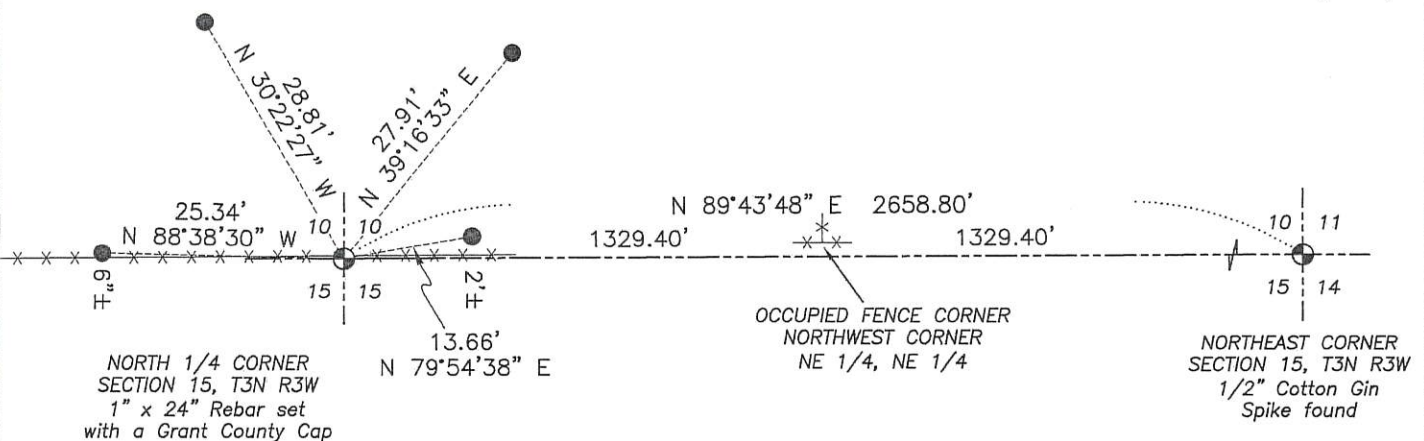
Witnesses to corner location Shane Austin, Owen Austin.

SKETCH:

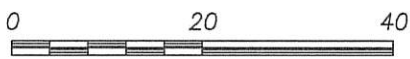
LEGEND

- ⊕ Section Corner—as designated
● 3/4" x 18" rebar set
-x-x-x Existing fence

P A S T U R E



P A S T U R E



SCALE 1" = 20'