

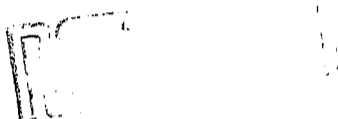
U. S. PUBLIC LAND SURVEY MONUMENT RECORD

INSTRUCTIONS: This record shall show the location of the corner and shall include all of the following nine elements (a through i).

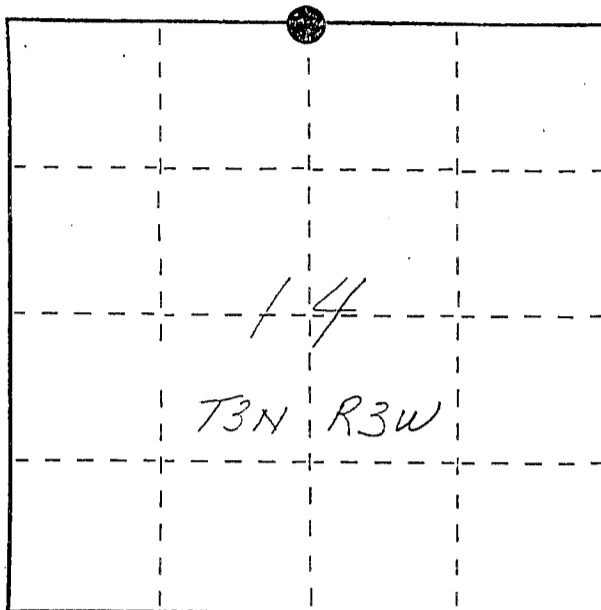
(a) Identify the corner by reference to the U.S. public land survey system.

● = Corner monument restored.

*N¹/₄ corner section 14
T3N R3W of the
4th P.M.
Town of Potosi
Grant County, Wisconsin.*



APR 27 1988

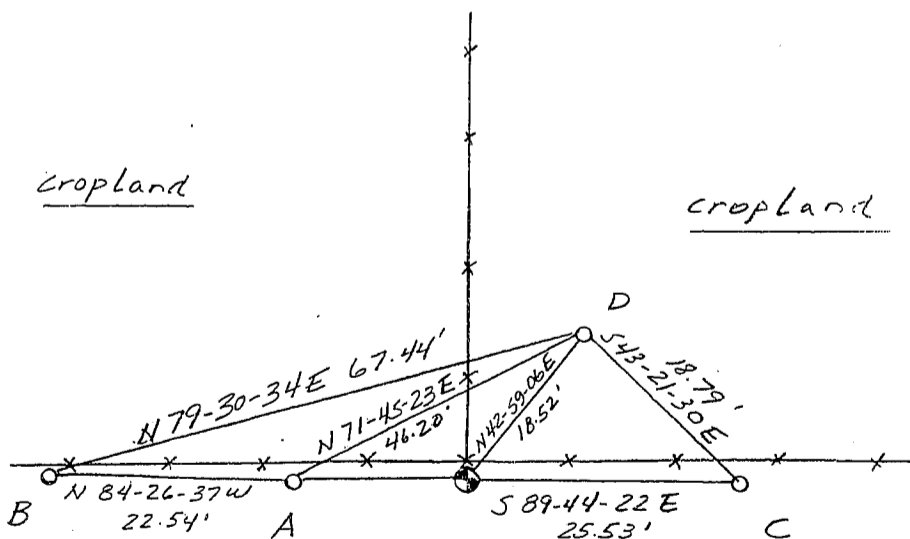


(b) Describe any record evidence, monument evidence, occupational evidence, testimonial evidence or any other material evidence you considered, and whether the monument was found or placed.

Monument set at existing fence corner. No other evidence could be found.

(c) In the plan view drawing below, provide reference ties to at least 4 witness monuments, or, if the location is within a municipality, to at least 2 witness monuments. (Witness monuments shall be made of concrete, natural stone, iron or other equally durable material, ~~except wood.~~) Describe witness monuments.

(d) Show a plan view drawing depicting the relevant monuments and reference ties which is sufficient in detail to enable accurate relocation of the corner monument if the corner monument is disturbed. Indicate north.



*No Scale
Bearings - Wis. Grid*

● Berntsen A-1 mon.
set at grade.

○ Ref. mon. - 3/4" x 24"
rebar w/cap.

COR. - A = S 88-19-29W 31.26'

*COR. - B = N 88-38-45W
53.70'*

cropland

