

# U.S. PUBLIC LAND SURVEY MONUMENT RECORD - GRANT COUNTY, WI

Section 13, Town 3 North, Range 3 West, Town of Potosi North

(a)

**NOTE:** This form is intended and designed to fulfill all requirements of Wisconsin Administrative Code Chapter A-E 7.08, U.S. Public Land Survey Monument Record (3) (a) (b) (c) (d) (e) (f) (g) (h) (i). "An additional sheet *may* be added if necessary to conform with said requirements.

**CERTIFICATE:**

(i)

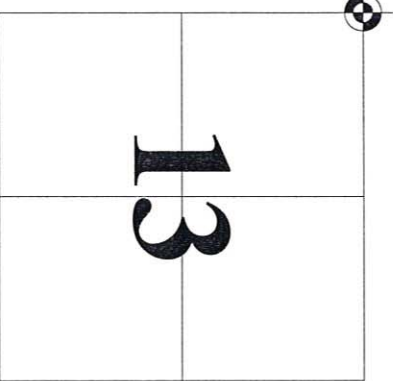
I, John Krebs, do hereby certify that the corner location on this record was determined by me and/or under my direct supervision and that this U.S. Public Land Survey Monument Record is correct and complete to the best of my knowledge and belief.

Dated this 4th day of April, 2012.

*John Krebs*  
 John Krebs, S-1878 4-23-12



CORNER LOCATION



**HISTORY OF CORNER ESTABLISHMENT:**

Corner was reset by Timothy J. Moore on March 8, 1988.  
 Michael S. O'Keefe, S-2743, located corner on July 6, 2011, before road construction began.

**DESCRIPTION OF CORNER EVIDENCE FOUND:**

Corner was removed during road construction. Used corner location per Michael S. O'Keefe. Found two ties per the sheet by Timothy J. Moore, S-1830, dated March 8, 1988. I set cotton pin at the Section corner and set three additional ties and found one tie as shown hereon.  
 Witnesses to corner location \_\_\_\_\_

(b) (f) (g) (h)

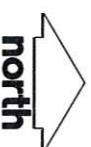
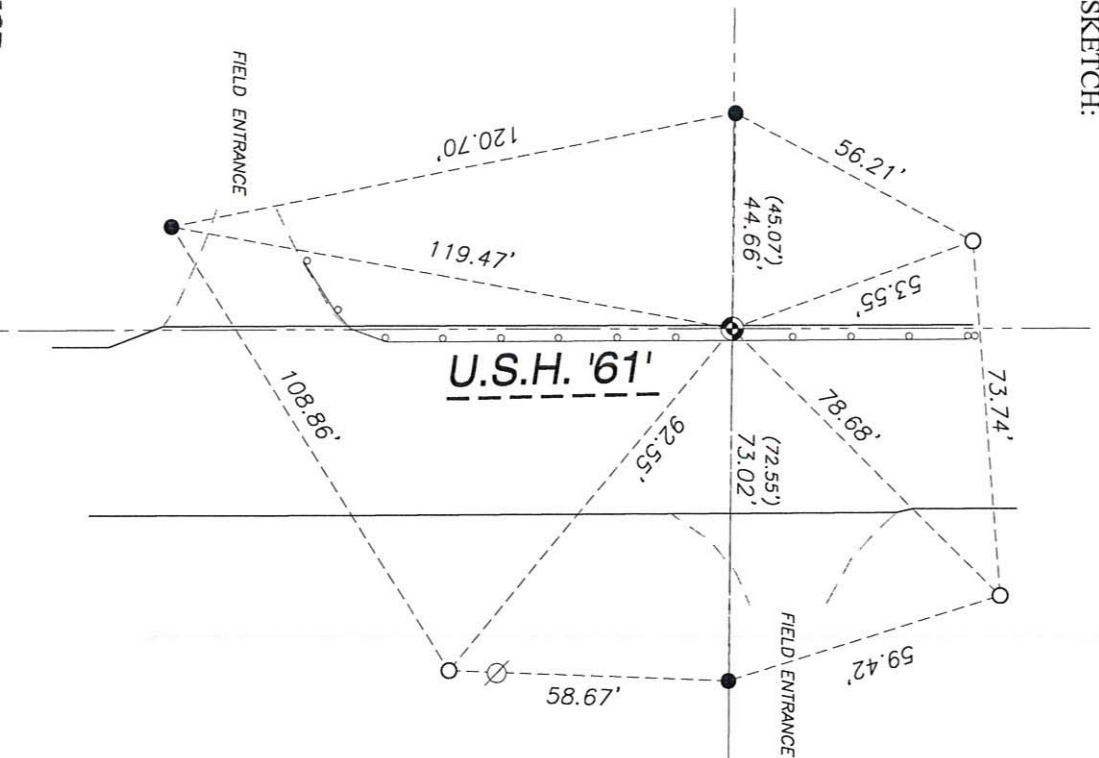
**DESCRIPTION OF CORNER AND WITNESS MONUMENTS:** references and accessories used to perpetuate the original or re-established location of this corner.

(c) (d) (e)

**SKETCH:**

**LEGEND**

- GOVERNMENT CORNER
- 3/4" REBAR FOUND
- 3/4" x 24" REBAR SET (1.50 LBS/LF)
- POWER POLE W/GUY
- SECTION LINE
- EDGE OF PAVEMENT
- EDGE OF GRAVEL
- GUARD OR SAFETY RAIL



SHEET 1 OF 1

SCALE: 1" = 40'

43

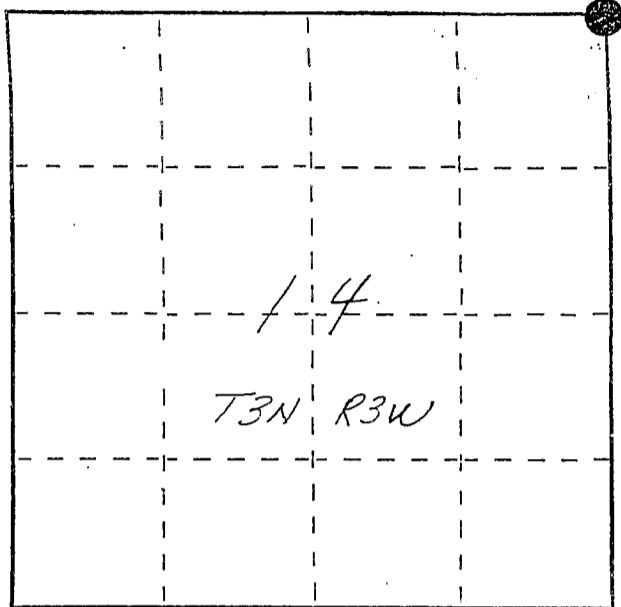
# U. S. PUBLIC LAND SURVEY MONUMENT RECORD

INSTRUCTIONS: This record shall show the location of the corner and shall include all of the following nine elements (a through i).

- (a) Identify the corner by reference to the U.S. public land survey system.

● = Corner monument restored.

NE corner section 14  
T3N R3W of the  
4th P.M.  
Town of Potosi  
Grant County, Wisconsin



APR 27, 1988

- (b) Describe any record evidence, monument evidence, occupational evidence, testimonial evidence or any other material evidence you considered, and whether the monument was found or placed.

Monument set at east-west fence and 20' west of the E. of U.S. Hwy 61 as shown on the 1935 hwy R/W plat. No other evidence of corner location could be found.

- (c) In the plan view drawing below, provide reference ties to at least 4 witness monuments, or, if the location is within a municipality, to at least 2 witness monuments. (Witness monuments shall be made of concrete, natural stone, iron or other equally durable material, ~~except wood.~~) Describe witness monuments.

- (d) Show a plan view drawing depicting the relevant monuments and reference ties which is sufficient in detail to enable accurate relocation of the corner monument if the corner monument is disturbed. Indicate north.

