

Wisconsin Department of Safety and Professional Services

Mail To: P.O. Box 8935
Madison, WI 53708-8935
Phone #: (608) 266-2112

Office Location: 4822 Madison Yards Way
Madison, WI 53705
Email: dsps@wisconsin.gov
Website: <http://dsps.wi.gov>

EXAMINING BOARD OF ARCHITECTS, LANDSCAPE ARCHITECTS, PROFESSIONAL ENGINEERS, DESIGNERS, PROFESSIONAL LAND SURVEYORS, AND REGISTERED INTERIOR DESIGNERS

PROFESSIONAL LAND SURVEYOR SECTION

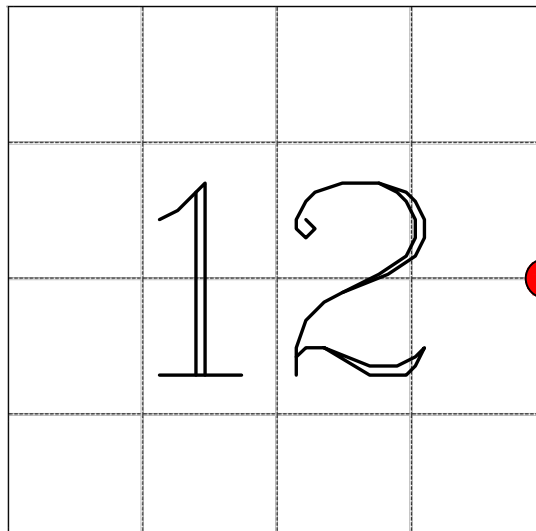
U.S. PUBLIC LAND SURVEY MONUMENT RECORD

INSTRUCTIONS: Per [Wis. Admin. Code § A-E 7.08](#), a U.S. public land survey monument record shall be prepared and filed with the county survey records as part of any land survey within 60 days of setting or accepting the corner which includes or requires the perpetuation, restoration, or use of a U.S. public land survey corner and when any of the situations in Wis. Admin. Code § A-E 7.08(1)(a), 7.08(1)(b) or 7.08(1)(c) arise.

Surveyor's Last Name ELSBREE	First Name BRANNON	MI D.	Credential Number 3230-8
Address (street, city, state, zip code) 1250 E DIEHL RD, STE 300, NAPERVILLE, IL 60563			Project ID 19004082

Identify the corner, as referenced to the U.S. public land survey system.

O = corner monument restored



T.3N | R.3W

Describe any record of evidence, monument evidence, occupational evidence, testimonial evidence or any other material evidence considered by the Professional Land Surveyor, and whether the monument was found or placed. (Attach additional sheets if necessary.)

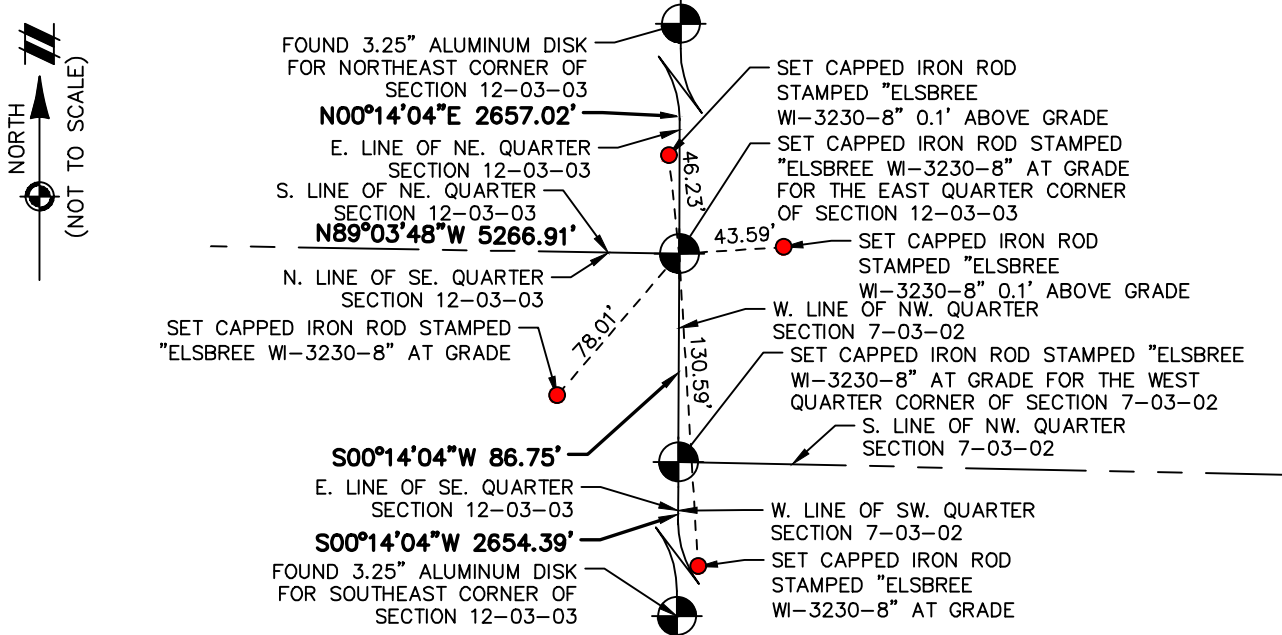
SURVEY NO. 878, PAGE 499, DATED JULY 9TH, 1856 BY C.T. OVERTON MENTIONS THE EAST QUARTER CORNER OF SECTION 12-T3N-R3W AS BEING AN ORIGINAL CORNER. NO MENTION AS TO WHAT WAS SET. PLAT OF SURVEY, BOOK 6, PAGE 29 DATED 8/23/1999 DESCRIBES A SET RAILROAD SPIKE AT THE CORNER.
NO EVIDENCE FOUND.

Wisconsin Department of Safety and Professional Services

Document a plan view drawing below.

- Depict the relevant monuments and reference ties, which is sufficient in detail to enable accurate relocation of the corner monument if the corner monument is disturbed.

- Provide reference ties to at least four (4) witness monuments. Witness monuments shall be concrete, natural stone, iron, bearing trees, or other equally durable material, except wood other than bearing trees.



Describe any material discrepancy between the location of the corner monument as restored and the monument location of that corner as previously established.

NO PREVIOUS RECORD FOUND.

Was the corner:

- Restored through acceptance of an obliterated evidence location.
- A found perpetuated location.
- Determined through lost-corner-proportionate methods. Yes No

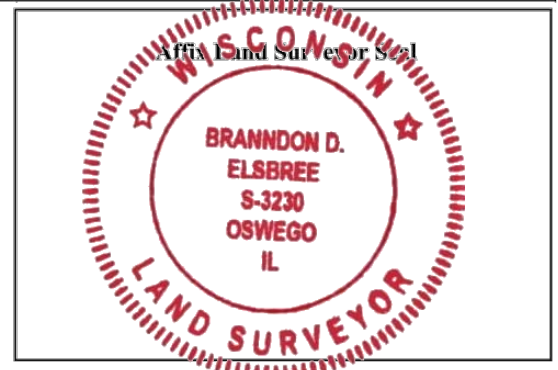
If Yes, show the method, including directions and distances to other public land survey corners, which were used as evidence or used for proportioning in determining corner location.

CERTIFICATION

I certify that the corner location shown on this record was determined by me or under my direction and control and that this U.S. Public Land Survey Monument Record (Form 3189) is correct and complete to the best of my knowledge and belief, in accordance with Wis. Admin. Code § A-E 7.08.

Signature: 
(If unable to provide a digital signature print and sign form.)

Date: 06 / 27 / 2023



\\ILNAP\PROJECTS\19004082\DWG\SURVEY\MONUMENT RECORDS\3N-3W-G25.DWG