

GRANT COUNTY CERTIFIED LAND CORNER

CERTIFICATE:

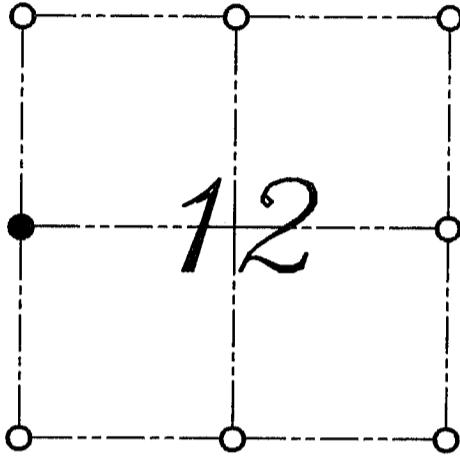
I, LARRY L. AUSTIN, DO HEREBY CERTIFY THAT ON NINTH DAY OF AUGUST, 1999, I FOUND NO EVIDENCE OF THE WEST 1/4 CORNER OF SECTION 12, TOWN 3 NORTH, RANGE 3 WEST, OF THE FOURTH PRINCIPAL MERIDIAN, AND I RE-ESTABLISHED SAID CORNER ACCORDING TO THE WISCONSIN STATUTES AS SHOWN AND DESCRIBED HEREON.

DATED THIS TENTH DAY OF SEPTEMBER, 1999

Larry L. Austin
LARRY L. AUSTIN S-1903



CORNER NUMBER 39



● = CORNER LOCATION
WEST 1/4 CORNER OF SECTION 12, T 3 N R 3 W TOWN OF SOUTH LANCASTER

HISTORY OF ORIGINAL CORNER ESTABLISHMENT:

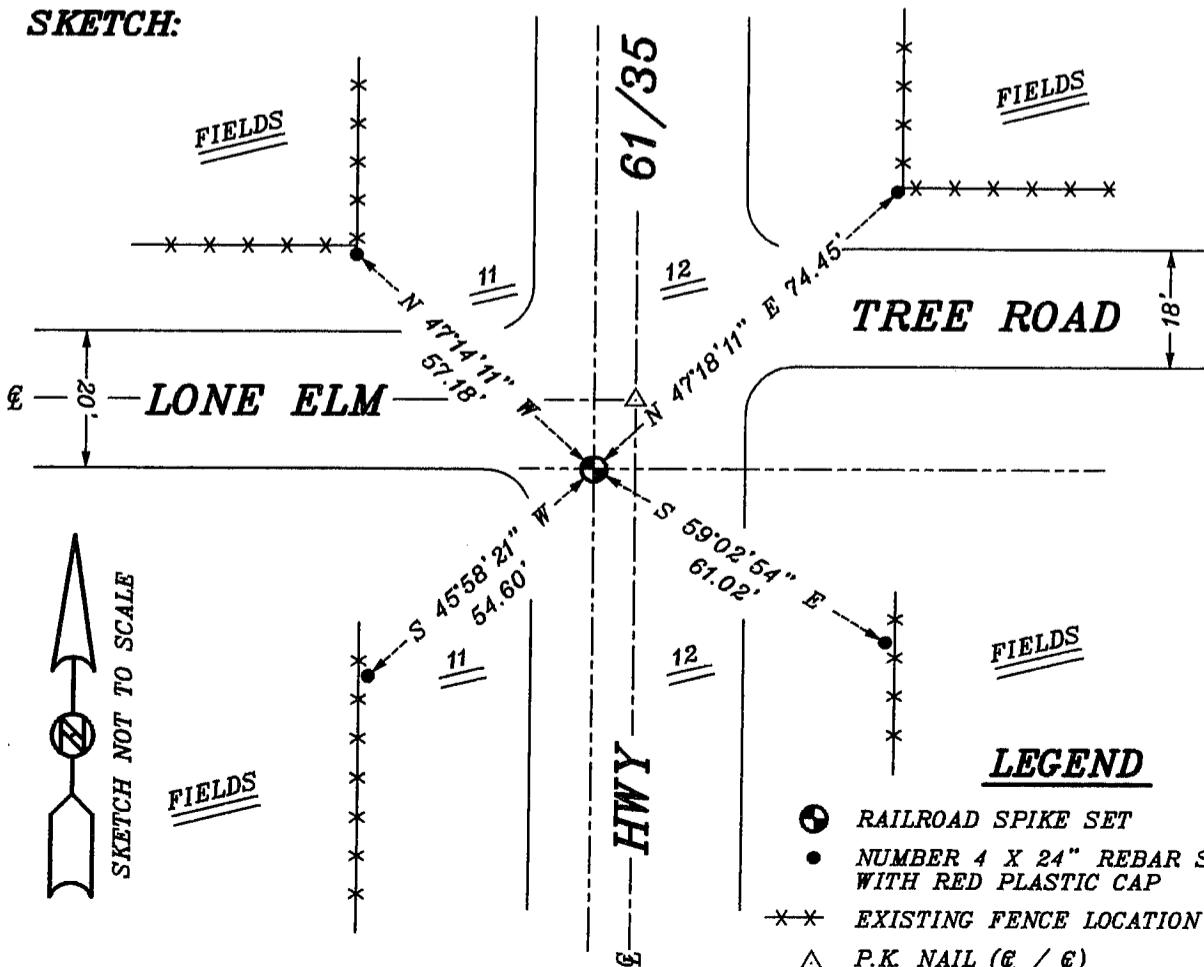
CORNER WAS SET IN 1833 BY ROBERT CLARK

DESCRIPTION OF CORNER EVIDENCE FOUND:

I FOUND NO EVIDENCE OF THE LOCATION. I SET THE CORNER AT A SINGLE PROPORTION ON THE WEST LINE OF SECTION 12. VERIFIED THIS LOCATION AFTER USING E.D.M. AND G.P.S. METHODS.

DESCRIPTION OF CORNER AND WITNESS MONUMENTS, REFERENCES AND ACCESSORIES USED TO PERPETUATE THE ORIGINAL OR RE-ESTABLISHED LOCATION OF THIS CORNER:
WITNESS TO THE CORNER LOCATION: BOBBY SEDGWICK ; SHELBY BLINDERT

SKETCH:



LEGEND

- ⊙ RAILROAD SPIKE SET
- NUMBER 4 X 24" REBAR SET WITH RED PLASTIC CAP
- ✕✕ EXISTING FENCE LOCATION
- △ P.K. NAIL (€ / €)