

U.S. PUBLIC LAND SURVEY MONUMENT RECORD

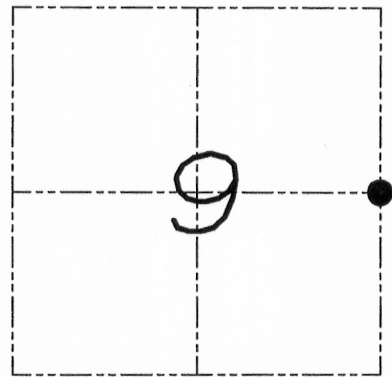
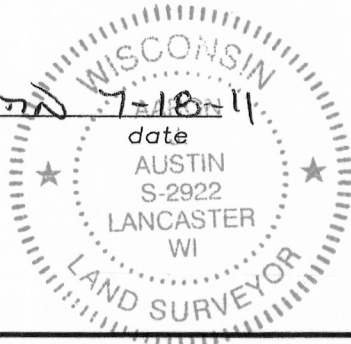
Section 9, Town 3 North Range 3 West, Town of Potosi, Grant County, Wisconsin

CERTIFICATE

I, Aaron J. Austin, do hereby certify that the corner location on this record was determined by me and/or under my direct supervision and that this U.S. public land survey monument record is correct and complete to the best of my knowledge and belief.

Aaron J. Austin
 Aaron J. Austin, S-2922

Aaron J. Austin, S-2922



● = CORNER LOCATION

HISTORY OF CORNER

Corner was originally set in 1833 by Robert Clark. In 1855 Overton performed a Survey and found the original corner. No other record of the corner was found.

CORNER EVIDENCE FOUND

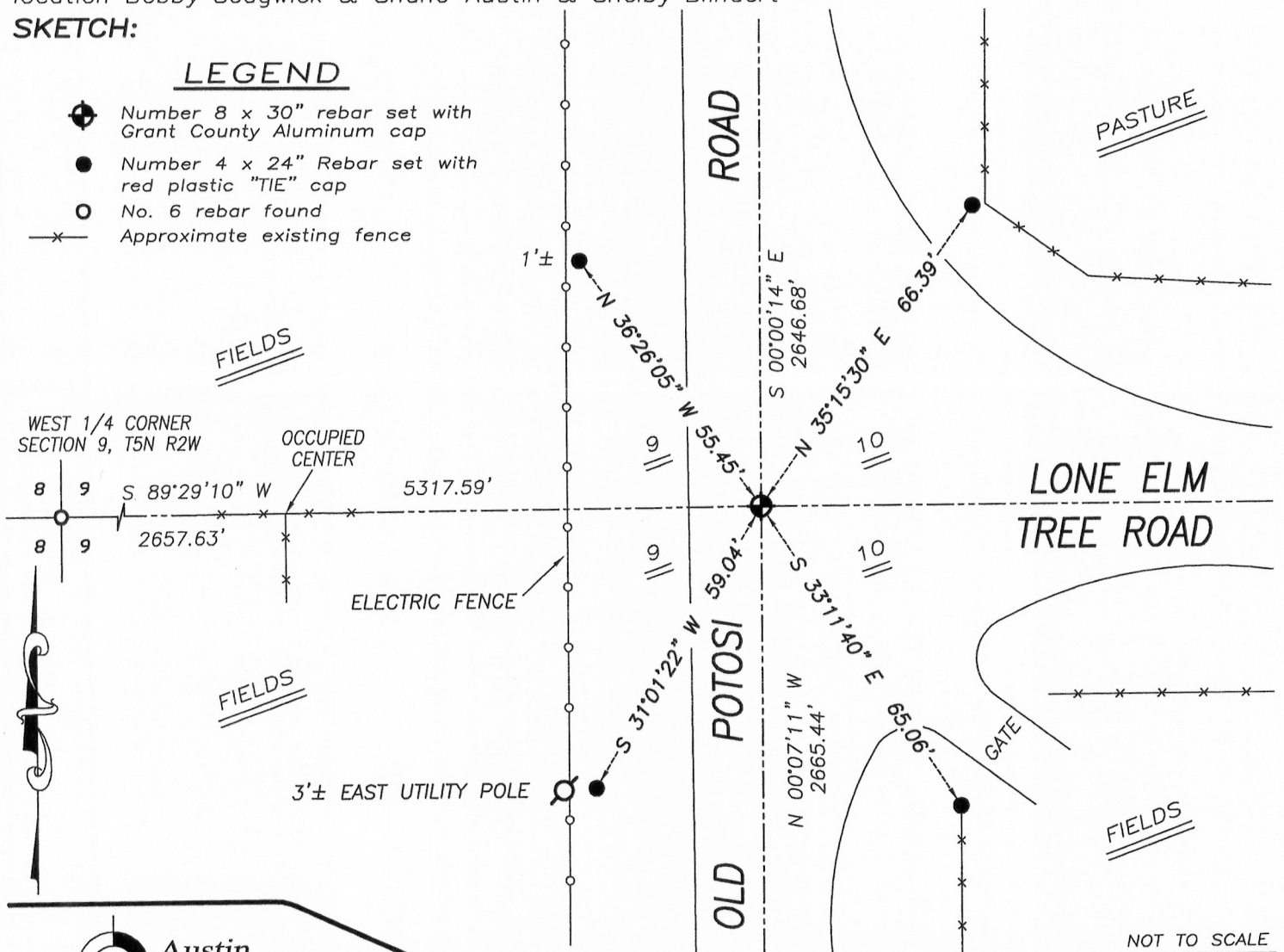
In 1888, Overton surveyed the N 1/2 of the SE 1/4 which established the center. I used the West 1/4 corner of Section 9 and projected through the occupied center which intersected with the centerline of Old Potosi Road. This location was verified by E.D.M. and G.P.S. methods.

DESCRIPTION OF CORNER AND WITNESS MONUMENTS, references and accessories used to perpetuate the original or re-established location of this corner. Witnesses to monument location Bobby Sedgwick & Shane Austin & Shelby Blindert

SKETCH:

LEGEND

- Number 8 x 30" rebar set with Grant County Aluminum cap
- Number 4 x 24" Rebar set with red plastic "TIE" cap
- No. 6 rebar found
- x— Approximate existing fence



JOB NUMBER 11s053-PENNEKAMP
 FIELDBOOK: TDSR, 10-05
 G:\T3NR3W\T3NR3W
 H:\TIE\T3NR3W\37

DRAWN BY: SW AUSTIN
 APPROVED: AJ AUSTIN

4211 HWY 81 E, LANCASTER, WI 53813
 PHONE: 608-723-6363 FAX: 608-723-6702