

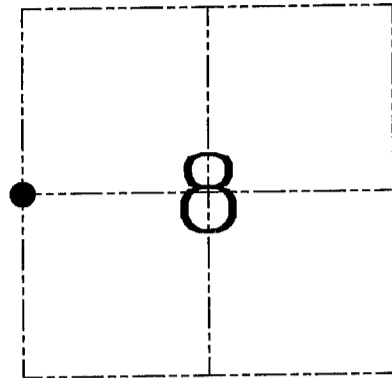
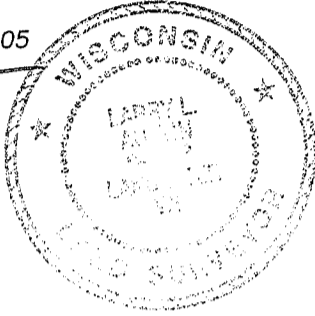
**U.S. PUBLIC LAND SURVEY MONUMENT RECORD – GRANT COUNTY, WI**  
**Section 8, Town 3 North Range 3 West, Town of Potosi**

CERTIFICATE

I, Larry L. Austin, do hereby certify that the corner location on this record was determined by me and/or under my direct supervision and that this U.S. public land survey monument record is correct and complete to the best of my knowledge and belief.

Dated this 22nd day of July, 2005

*Larry L. Austin*  
 Larry L. Austin S-1903



● = CORNER LOCATION

HISTORY OF CORNER ESTABLISHMENT

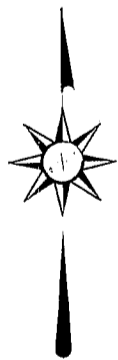
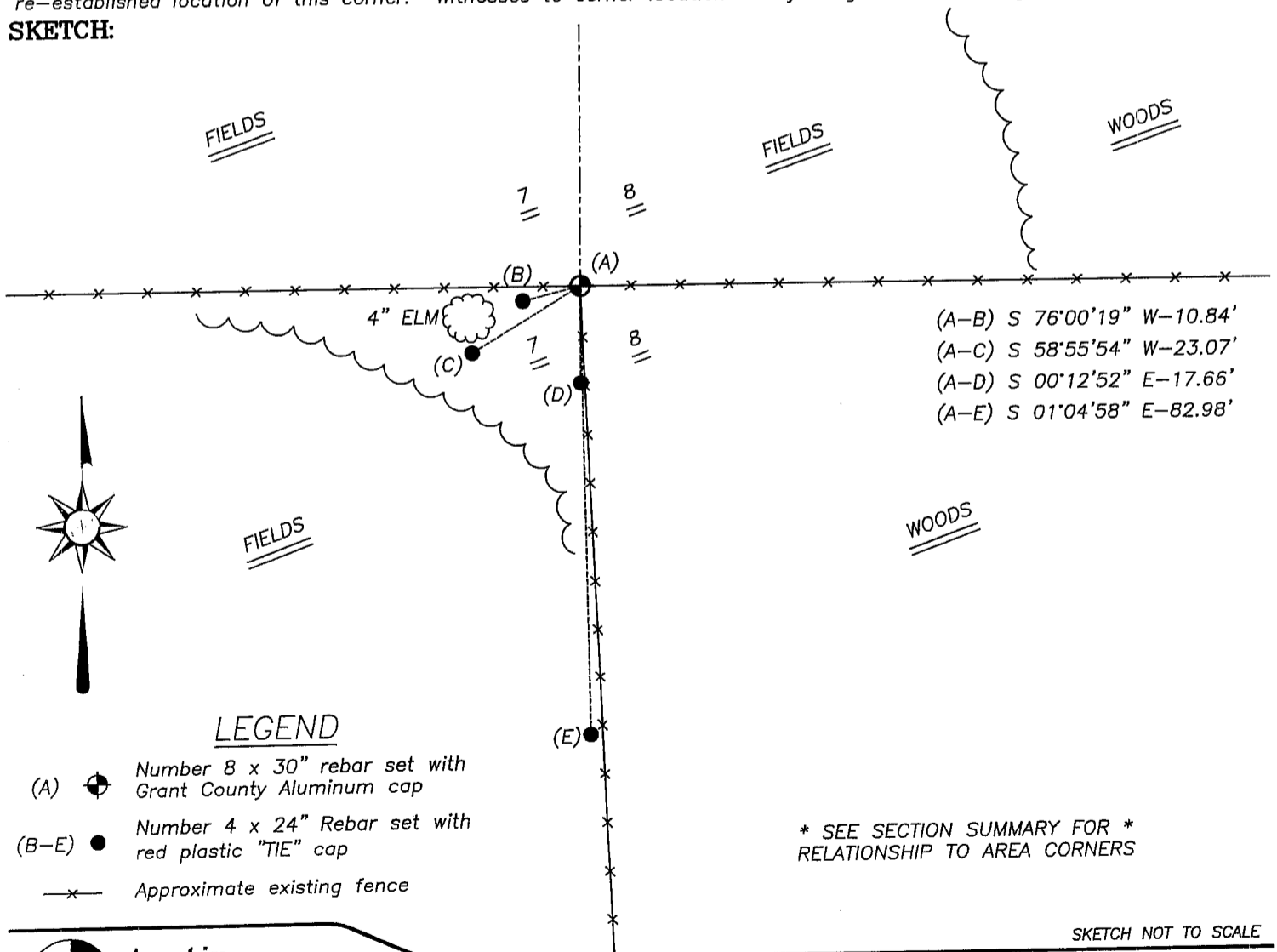
Corner was originally set in 1833 by Clark.  
 No recent record of the corner was found.

DESCRIPTION OF CORNER EVIDENCE FOUND

I reset the corner based on an occupied location.  
 Verified this location using EDM & GPS methods.

DESCRIPTION OF CORNER AND WITNESS MONUMENTS, references and accessories used to perpetuate the original or re-established location of this corner. Witnesses to corner location Bobby Sedgwick & Brad Digman & Shane Austin

**SKETCH:**



LEGEND

- (A) Number 8 x 30" rebar set with Grant County Aluminum cap
- (B-E) Number 4 x 24" Rebar set with red plastic "TIE" cap
- Approximate existing fence

\* SEE SECTION SUMMARY FOR \*  
 RELATIONSHIP TO AREA CORNERS

SKETCH NOT TO SCALE



**Austin**  
**Engineering LLC**

4211 HWY 81 E, LANCASTER, WI 53813  
 PHONE 608-723-6363 FAX 608-723-6702

JOB NUMBER 05S076  
 FIELDBOOK: TDSR, 2507  
 G:\T3NR3W\T3NR3W  
 H:\TIE\T3NR3W\35

DRAWN BY: BJ HAZEN  
 APPROVED: LL AUSTIN