

U.S. PUBLIC LAND SURVEY MONUMENT RECORD

Section 4, Town 3 North Range 3 West, Town of Potosi, Grant County, Wisconsin

CERTIFICATE

I, Larry L. Austin, do hereby certify that the corner location on this record was determined by me and/or under my direct supervision and that this U.S. public land survey monument record is correct and complete to the best of my knowledge and belief.



Larry L. Austin
Larry L. Austin, S-1903

2.18.11
date



● = CORNER LOCATION

HISTORY OF CORNER

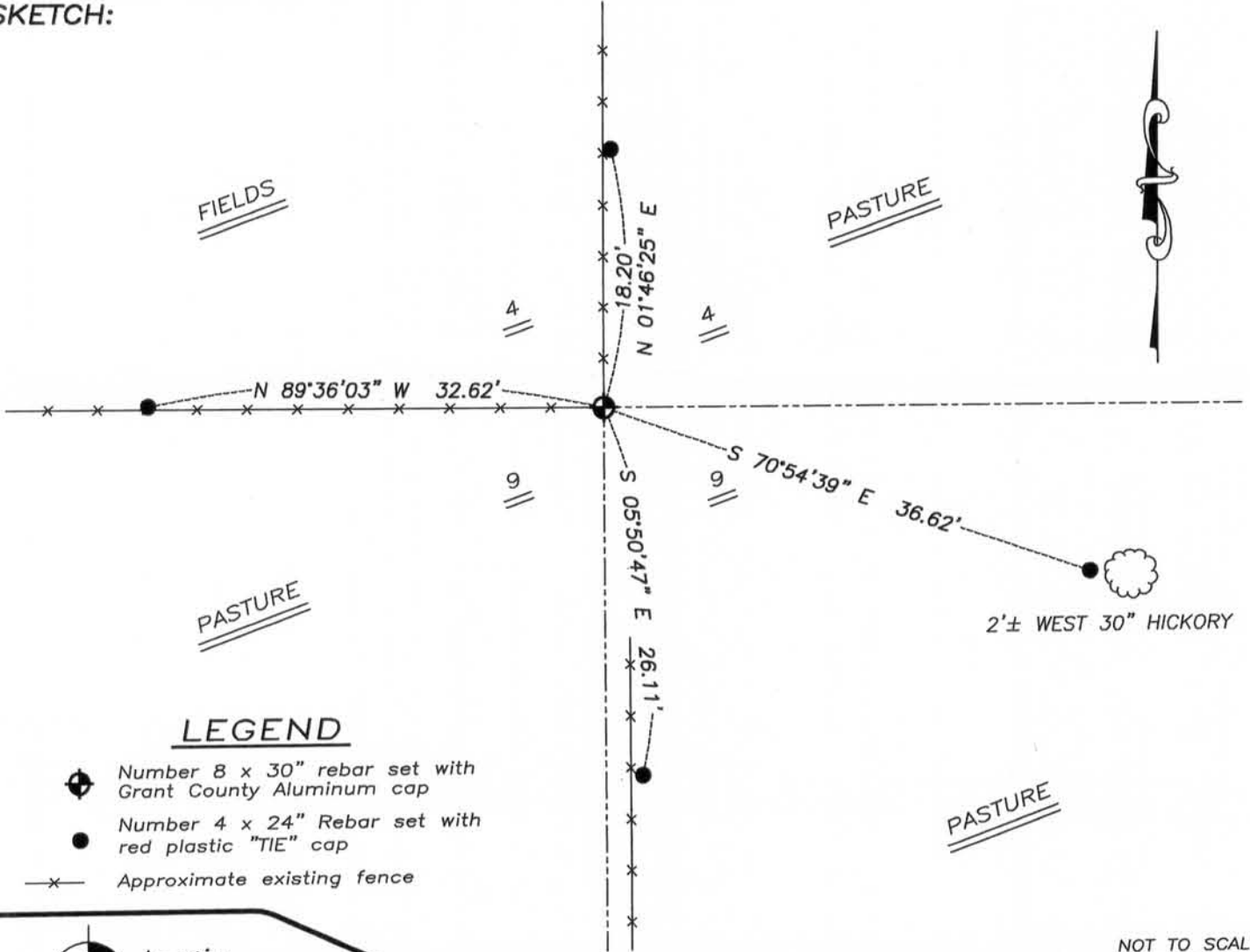
Corner was originally set in 1833 by Clark. Overton tied to the corner in 1855 with no mention of monument. No other record of the corner was found.

CORNER EVIDENCE FOUND

I found an existing fence corner and accepted it using EDM & GPS methods. Verified it's location to all occupied and monumented corners along the South line of Section 4.

DESCRIPTION OF CORNER AND WITNESS MONUMENTS, references and accessories used to perpetuate the original or re-established location of this corner. Witnesses to monument location Bobby Sedgwick & Brad Digman & Shelby Blindert

SKETCH:



LEGEND

- ◆ Number 8 x 30" rebar set with Grant County Aluminum cap
- Number 4 x 24" Rebar set with red plastic "TIE" cap
- x— Approximate existing fence

NOT TO SCALE



Austin Engineering LLC
austinengineeringllc.com

4211 HWY 81 E, LANCASTER, WI 53813
PHONE: 608-723-6363 FAX: 608-723-6702

JOB NUMBER 10S036-PIERCE
FIELDBOOK: TDSR, 2911
G:\T3NR3W\T3NR3W
H:\TIE\T3NR3W\28

DRAWN BY: SW AUSTIN
APPROVED: LL AUSTIN

28

FEB 23 2011