

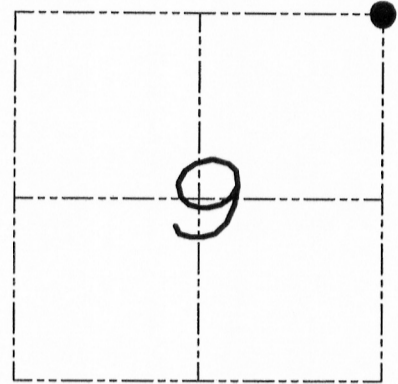
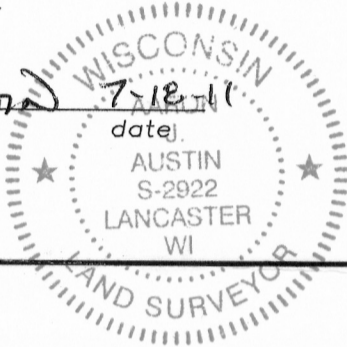
# U.S. PUBLIC LAND SURVEY MONUMENT RECORD

Section 9, Town 3 North Range 3 West, Town of Potosi, Grant County, Wisconsin

CERTIFICATE

I, Aaron J. Austin, do hereby certify that the corner location on this record was determined by me and/or under my direct supervision and that this U.S. public land survey monument record is correct and complete to the best of my knowledge and belief.

*Aaron J. Austin*  
 Aaron J. Austin, S-2922



● = CORNER LOCATION

HISTORY OF CORNER

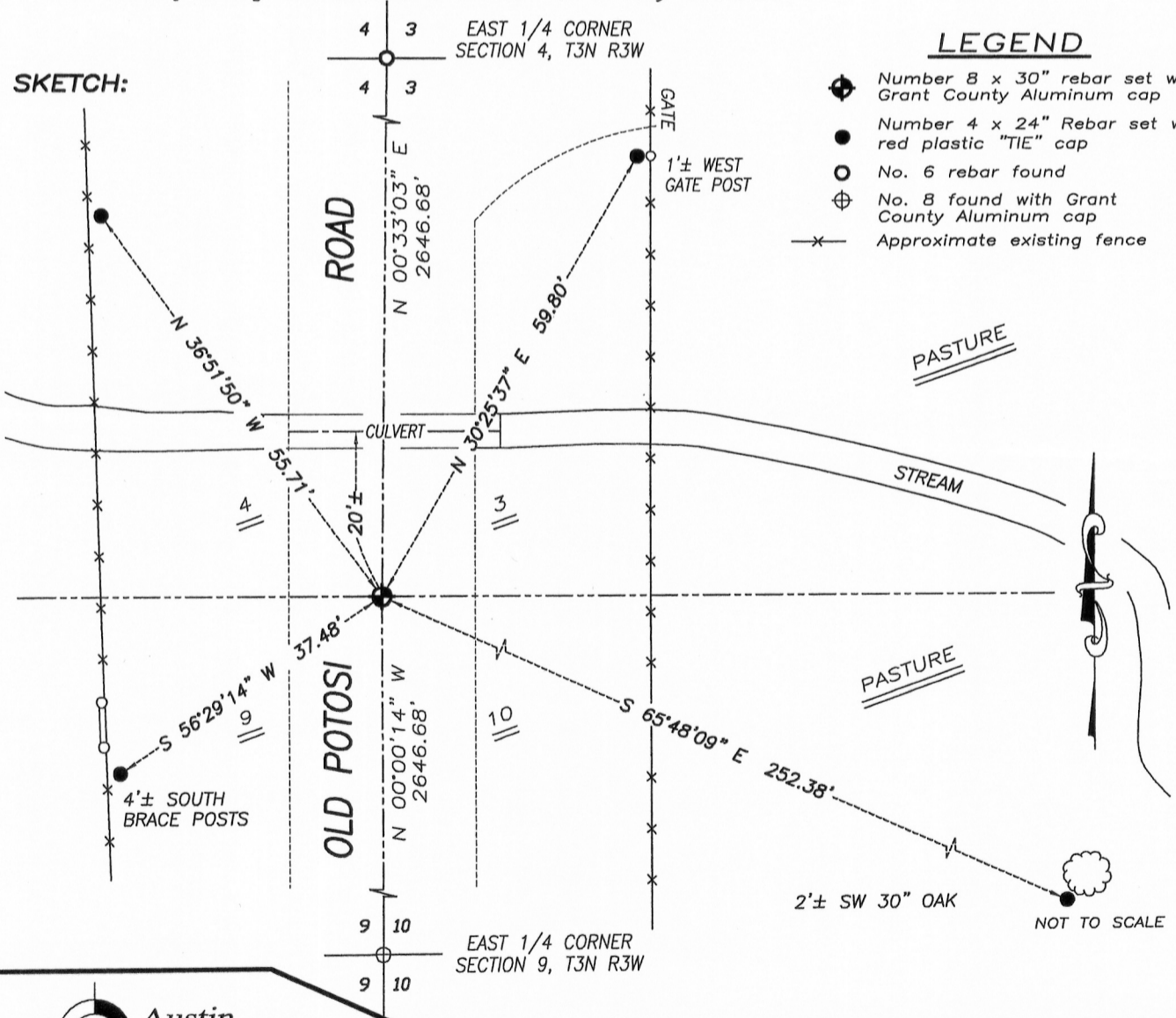
Corner was originally set in 1833 by Robert Clark. No other record of the corner was found.

CORNER EVIDENCE FOUND

I accepted occupational evidence of the centerline of Old Potosi Road for the Easting and proportional between the East 1/4 corner of Section 4 and the East 1/4 corner of Section 9. This location was verified by E.D.M. and G.P.S. methods.

DESCRIPTION OF CORNER AND WITNESS MONUMENTS references and accessories used to perpetuate the original or re-established location of this corner. Witnesses to monument location Bobby Sedgwick & Shane Austin & Shelby Blindert

**SKETCH:**



**Austin Engineering LLC**  
 austinengineeringllc.com

4211 HWY 81 E, LANCASTER, WI 53813  
 PHONE: 608-723-6363 FAX: 608-723-6702

JOB NUMBER 11s053-PENNEKAMP  
 FIELDBOOK: TDSR, 10-05  
 G:\T3NR3W\T3NR3W  
 H:\TIE\T3NR3W\27

DRAWN BY: SW AUSTIN  
 APPROVED: AJ AUSTIN

AUG 04 2011