

# U.S. PUBLIC LAND SURVEY MONUMENT RECORD - GRANT COUNTY, WI

Section 1, Town 3 North Range 3 West, Town of Potosi North

(a)

NOTE: This form is intended and designed to fulfill all requirements of Wisconsin Administrative Code Chapter A-E 7.08, U.S. Public Land Survey Monument Record (3) (a) (b) (c) (d) (e) (f) (g) (h) (i). "An additional sheet may be added if necessary to conform with said requirements."

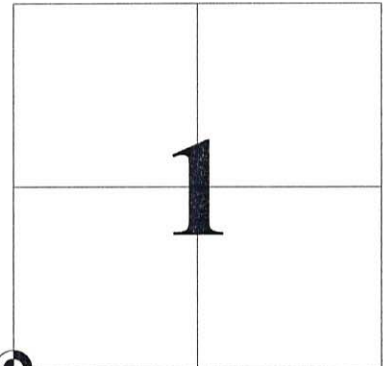
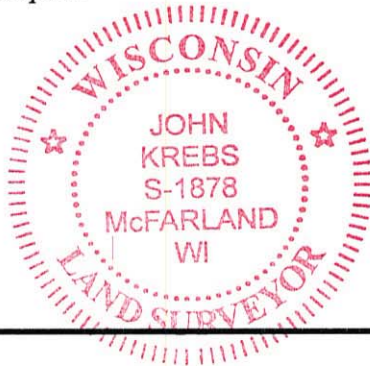
CERTIFICATE:

(i)

I, John Krebs, do hereby certify that the corner location on this record was determined by me and/or under my direct supervision and that this U.S. Public Land Survey Monument Record is correct and complete to the best of my knowledge and belief.

Dated this 4th day of April, 2012.

*John Krebs* 4-23-12  
 John Krebs, S-1878



CORNER LOCATION

HISTORY OF CORNER ESTABLISHMENT:

Corner was originally set in 1833 by Robert Clark.  
 Corner was reset by Larry L. Austin on November 25, 2000.  
 Michael S. O'Keefe, S-2743, located corner on July 6, 2011, before road construction began.

DESCRIPTION OF CORNER EVIDENCE FOUND:

(b) (f) (g) (h)

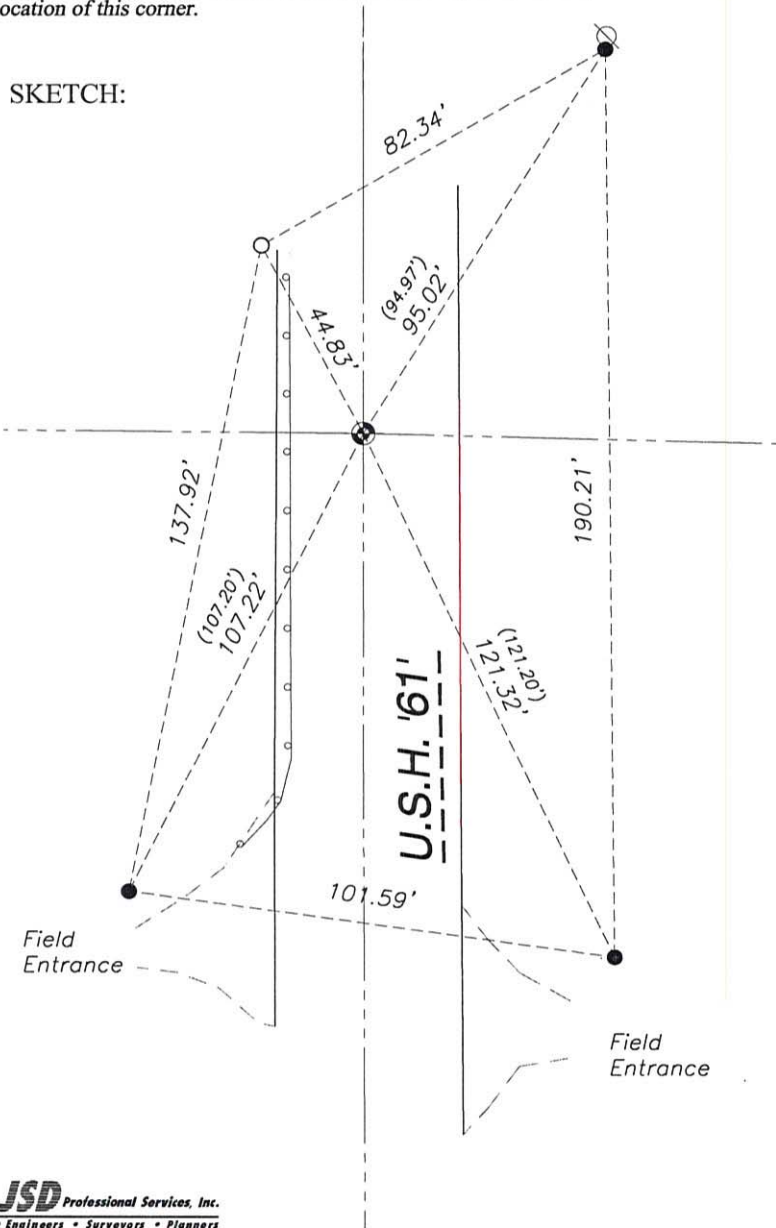
Corner was removed during road construction. Replaced corner per location by Michael S. O'Keefe. Found three ties per a tie sheet by Larry L. Austin, S-1903, dated November 25, 2000. I set a cotton pin at the Section Corner and set one additional tie as shown hereon.

Witnesses to corner location \_\_\_\_\_

DESCRIPTION OF CORNER AND WITNESS MONUMENTS: references and accessories used to perpetuate the original or re-established location of this corner.

(c) (d) (e)

SKETCH:



LEGEND

- GOVERNMENT CORNER
- 3/4" REBAR FOUND
- 3/4" x 24" REBAR SET (1.50 LBS/LF)
- POWER POLE W/GUY
- SECTION LINE
- EDGE OF PAVEMENT
- EDGE OF GRAVEL
- GUARD OR SAFETY RAIL



SCALE: 1" = 40'

SHEET 1 OF 1

23

J:\2011\114660\dwg\11-4660 WisDOT Dickeyville.dwg

**JSD** Professional Services, Inc.  
 Engineers • Surveyors • Planners

161 HORIZON DRIVE, SUITE 101  
 VERONA, WISCONSIN 53593  
 PHONE: (608)-848-5060

# GRANT COUNTY CERTIFIED LAND CORNER

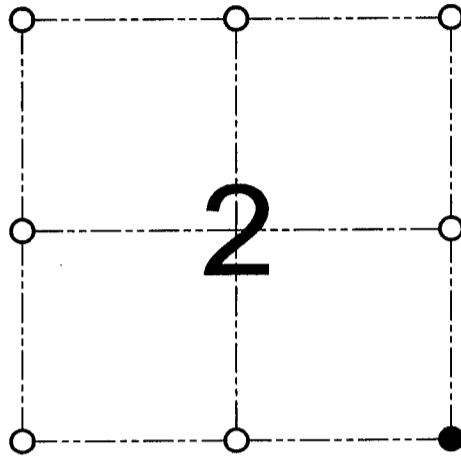
CORNER NUMBER 23

**CERTIFICATE:**

I, Larry L. Austin, do hereby certify that on the 9th day of October, 2000, I found no evidence of the Southeast corner of Section 2, Town 3 North, Range 3 West, of the 4th Principal Meridian, and I re-established said corner according to the Wisconsin statutes as shown and described hereon.

Dated this 25th day of November, 2000

*Larry L. Austin*  
Larry L. Austin S-1903



● = CORNER LOCATION

SOUTHEAST CORNER OF  
SECTION 2, T 3 N R 3 W  
TOWN OF POTOSI

**HISTORY OF ORIGINAL CORNER ESTABLISHMENT:**

Corner was originally set in 1833 by Robert Clark.  
No other record of the corner was found.

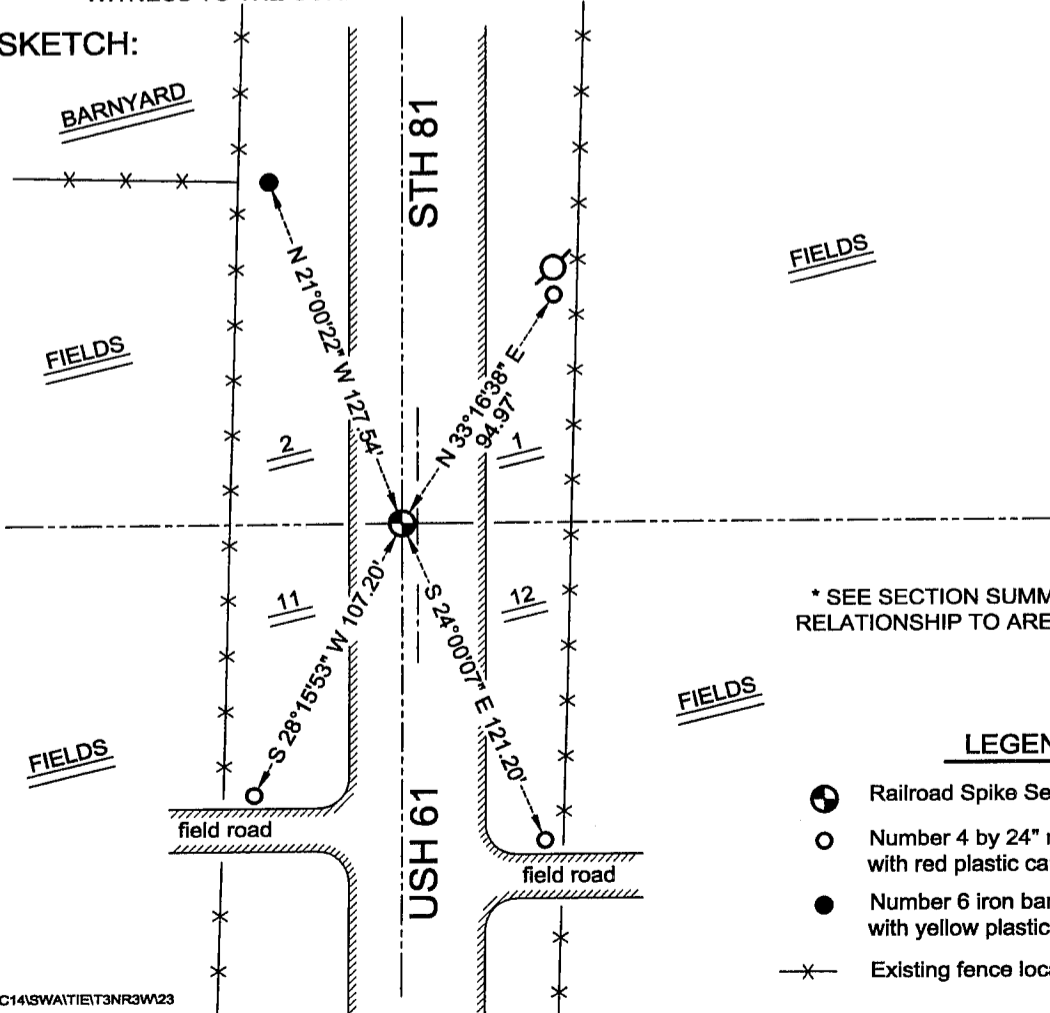
**DESCRIPTION OF CORNER EVIDENCE FOUND:**

I reset the corner based on doubling out an occupied 40 corner from the West. Verified this location after an EDM & GPS traverse of the area.

**DESCRIPTION OF CORNER AND WITNESS MONUMENTS, references and accessories used to perpetuate the original or re-established location of this corner**

WITNESS TO THE CORNER LOCATION: SHANE AUSTIN & TIM FAUVER & BOBBY SEDGWICK

**SKETCH:**



\* SEE SECTION SUMMARY FOR \*  
RELATIONSHIP TO AREA CORNERS

**LEGEND**

- Railroad Spike Set
- Number 4 by 24" rebar set with red plastic cap
- Number 6 iron bar found with yellow plastic survey cap
- x- Existing fence location