

# U.S. PUBLIC LAND SURVEY MONUMENT RECORD - GRANT COUNTY, WI

Section 1, Town 3 North, Range 3 West, Town of Potosi North

(a)

**NOTE:** This form is intended and designed to fulfill all requirements of Wisconsin Administrative Code. Chapter A-E 7.08, U.S. Public Land Survey Monument Record (3) (a) (b) (c) (d) (e) (f) (g) (h) (i). "An additional sheet may be added if necessary to conform with said requirements."

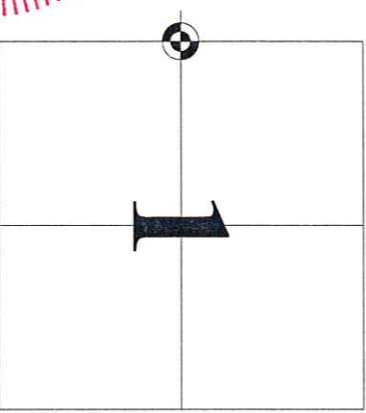
**CERTIFICATE:**

(i)

I, John Krebs, do hereby certify that the corner location on this record was determined by me and/or under my direct supervision and that this U.S. Public Land Survey Monument Record is correct and complete to the best of my knowledge and belief.

Dated this 4th day of April, 2012.

*John Krebs*  
 John Krebs, S-1878



**HISTORY OF CORNER ESTABLISHMENT:**

Corner was originally set in 1833 by Robert Clark.  
 In 1852 John Everett tied to the corner.  
 On February 21, 2000 corner was reset by Larry L. Austin.  
 Michael S. O'Keefe, S-2743, located corner on July 6, 2011, before road construction began.

**DESCRIPTION OF CORNER EVIDENCE FOUND:**

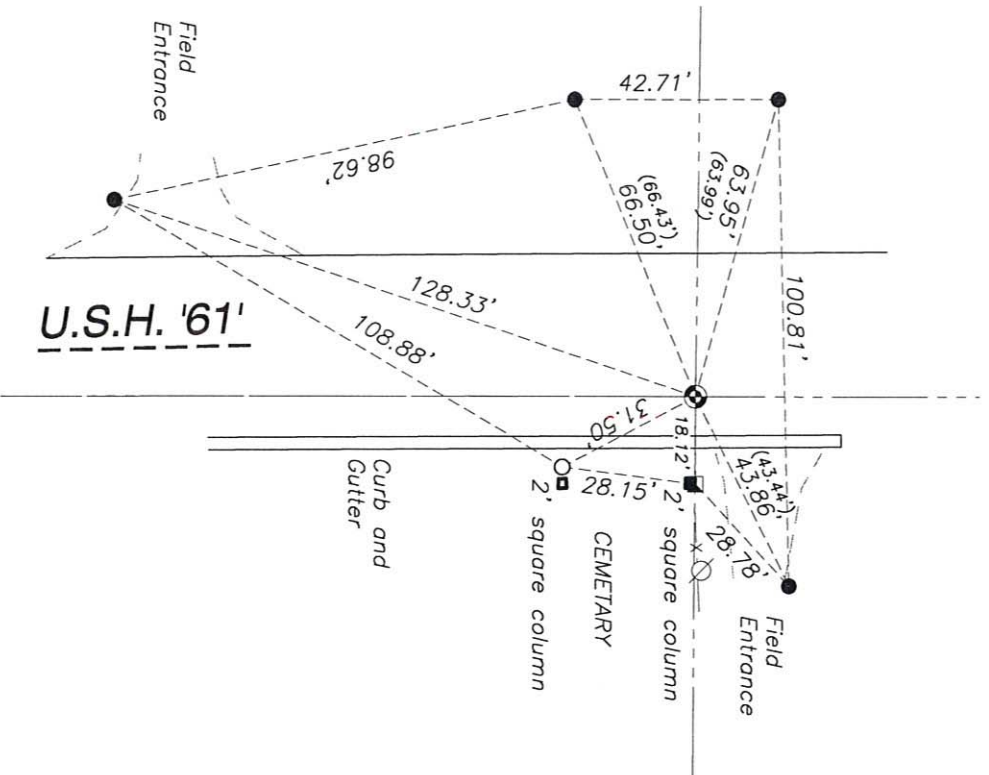
Corner was removed during road construction. Replaced corner per location by Michael S. O'Keefe.  
 Found three ties from a tie sheet by Larry L. Austin. Set cotton pin at Section corner found a 2" pipe and set one additional tie as shown hereon.

(b) (i) (g) (h)

**Witnesses to corner location**

**DESCRIPTION OF CORNER AND WITNESS MONUMENTS:** references and accessories used to perpetuate the original or re-established location of this corner. (c) (d) (e)

**SKETCH:**



**LEGEND**

- GOVERNMENT CORNER
- 3/4" REBAR FOUND
- 2" IRON PIPE FOUND
- 3/4" x 24" REBAR SET (1.50 LBS/LF)
- POWER POLE W/GUY
- SECTION LINE
- EDGE OF PAVEMENT
- EDGE OF GRAVEL
- FENCE LINE



SHEET 1 OF 1

SCALE: 1" = 40'

# GRANT COUNTY CERTIFIED LAND CORNER

CORNER NUMBER 19

**CERTIFICATE:**

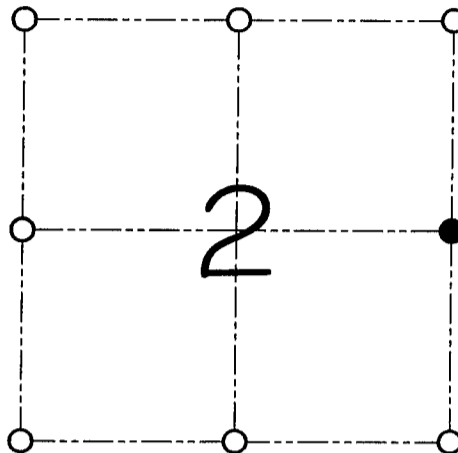
I, Larry L. Austin, do hereby certify that on the 7th day of February, 2000, I found evidence of the East 1/4 corner of Section 02, Town 3 North, Range 3 West, of the 4th Principal Meridian, and I re-established said corner according to the Wisconsin statutes as shown and described hereon.

Dated this 21st day of February, 2000

Larry L. Austin S-1903



SEAL



● = CORNER LOCATION

**EAST 1/4 CORNER OF  
SECTION 02, T 3 N R 3 W  
TOWN OF POTOSI**

**HISTORY OF ORIGINAL CORNER ESTABLISHMENT:**

Corner was originally set in 1833 by Robert Clark.  
In 1852 John Everett tied to the corner.

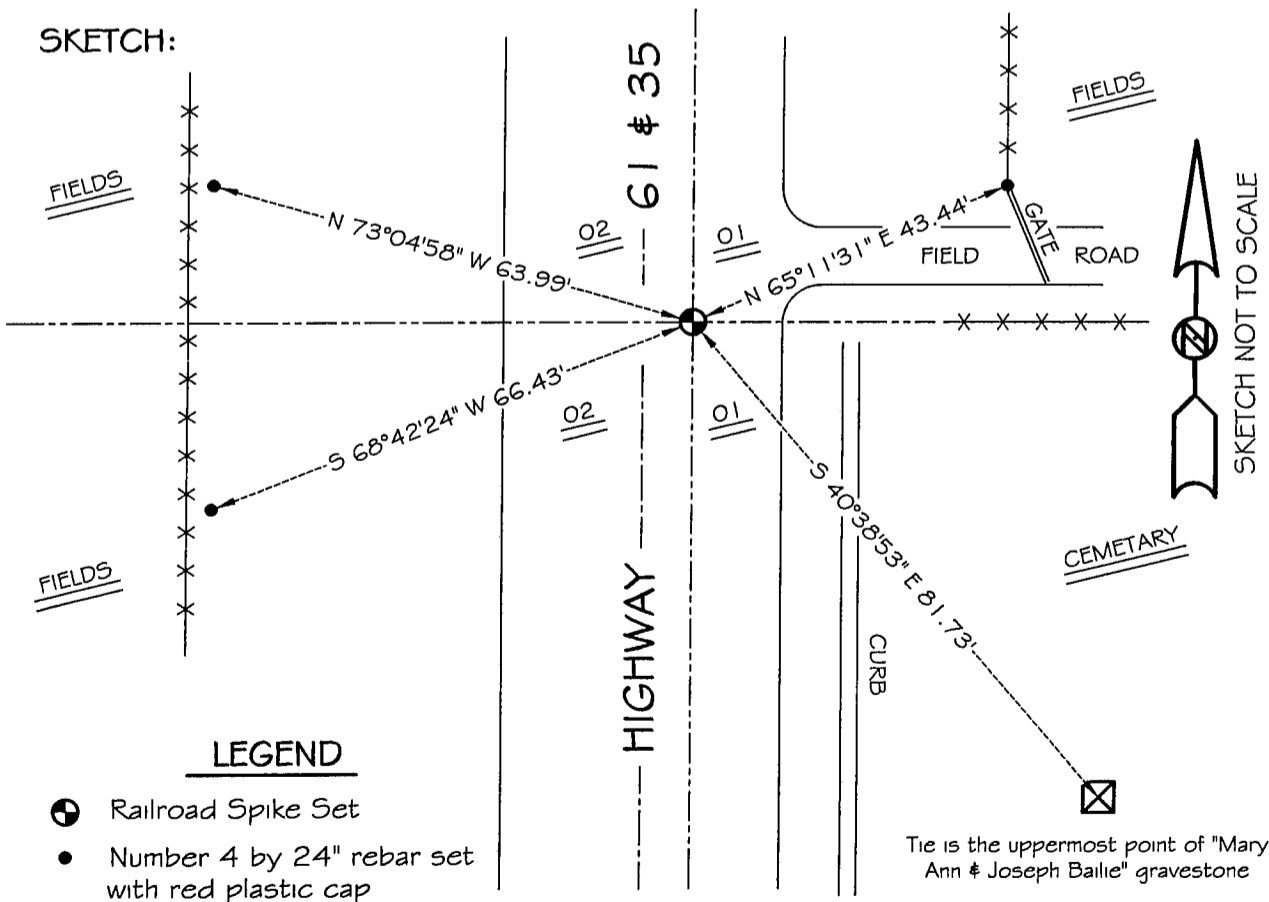
**DESCRIPTION OF CORNER EVIDENCE FOUND:**

I found no evidence of the original corner. I reset the corner based on the evidence of the cemetery. Verified this location using E.D.M. and G.P.S. methods.

**DESCRIPTION OF CORNER AND WITNESS MONUMENTS, references and accessories used to perpetuate the original or re-established location of this corner**

WITNESS TO THE CORNER LOCATION: BOBBY SEDGWICK & SHELBY BLINDERT

**SKETCH:**



**LEGEND**

- ⊕ Railroad Spike Set
- Number 4 by 24" rebar set with red plastic cap
- x— Existing fence location

\* SEE SECTION SUMMARY FOR \*  
RELATIONSHIP TO AREA CORNERS