

U.S. PUBLIC LAND SURVEY MONUMENT RECORD - GRANT COUNTY, WI

Section 3, Town 3 North Range 3 West, Town of Potosi (a)

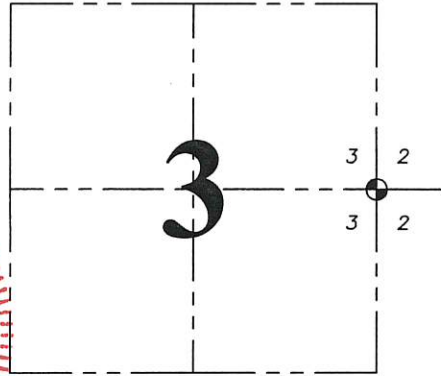
NOTE: This form is intended and designed to fulfill all requirements of the Wisconsin Administrative Code Chapter A-E 7.08, U.S. Public Land Survey Monument Record (3) (a) (b) (c) (d) (e) (f) (g) (h) (i).

CERTIFICATE: (i)

I, Aaron J. Austin, Wisconsin Professional Land Surveyor, do hereby certify that the corner location on this record was determined by me and/or under my direct supervision and that this U.S. Public Land Survey Monument Record is correct and complete to the best of my knowledge and belief.

Dated this 11th day of May, 2018.

Aaron J. Austin
Aaron J. Austin, S-2922



⊕ = CORNER LOCATION

HISTORY OF CORNER ESTABLISHMENT:

Original corner was set by Robert Clark in 1833.
Larry Austin set a 3/4" rebar with a Grant County Aluminum Cap and prepared a Survey Monument Record dated 12-20-1997.

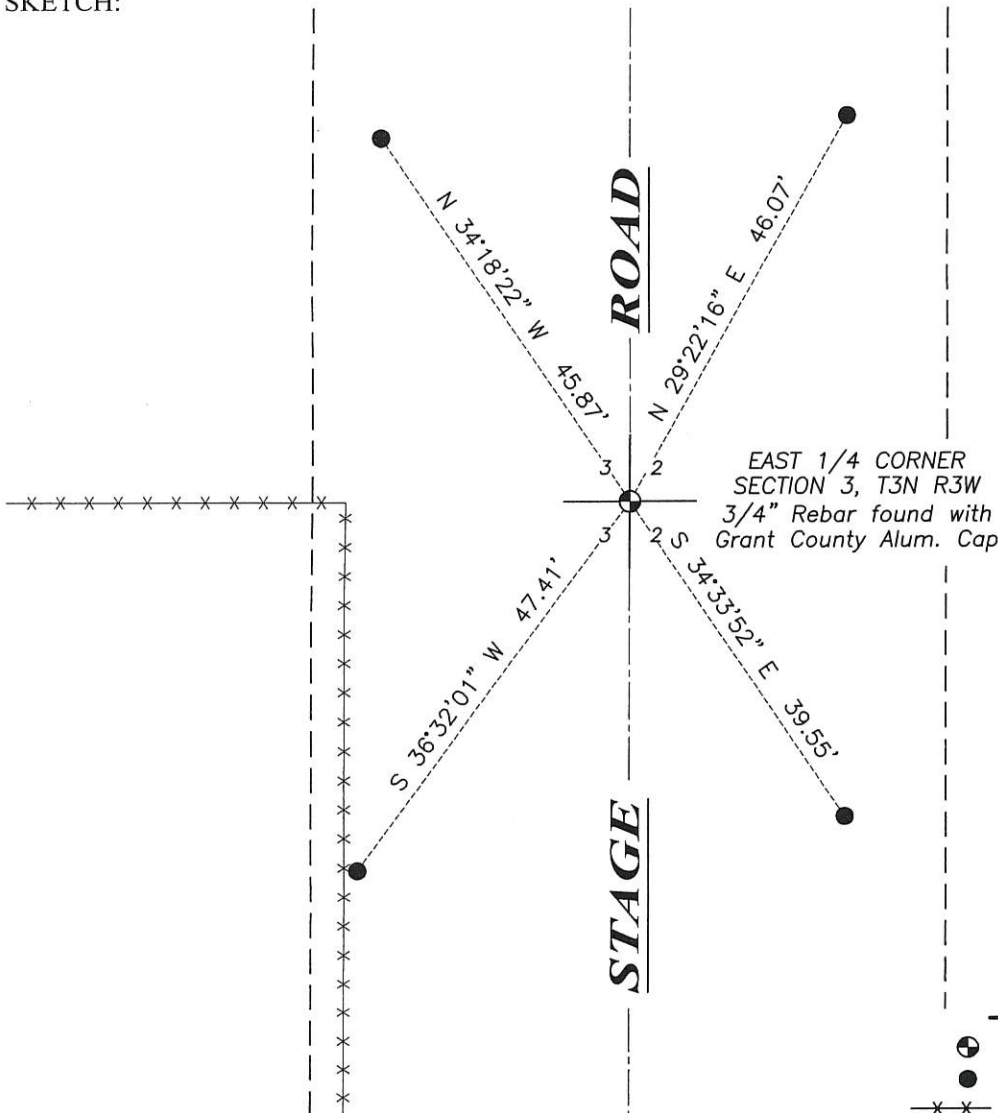
DESCRIPTION OF CORNER EVIDENCE FOUND: (b) (f) (g) (h)

I found the 3/4" rebar with a Grant County Aluminum Cap as set by Larry Austin. I set four new witness corners after I verified the monuments location with G.P.S. and E.D.M. methods.

DESCRIPTION OF CORNER AND WITNESS MONUMENTS, references and accessories used to perpetuate the original or re-established location of this corner. (c) (d) (e)

Witnesses to corner location Shane Austin.

SKETCH:



LEGEND

- ⊕ Section Corner—as designated
- 3/4" x 18" rebar set
- x-x- Existing fence
- - - Centerline
- - - Right of way



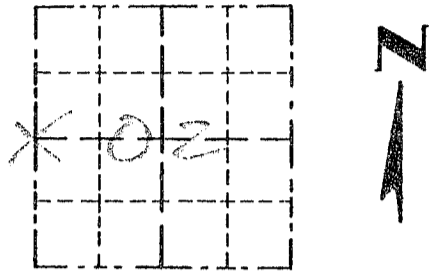
SCALE 1" = 20'

Survey Monument Record

TYPE OF MONUMENT 3/4" x 24" IRON
BAR SET W/ CAP

CORNER NO. 18
 SECTION 02
 TOWN 3N
 RANGE 3W

FIELD BOOK: 96-01
 PAGE 25



LOCATION
 (Indicated by "X")

BASIS FOR MONUMENT LOCATION

(Use reverse side if necessary)

Show info such as: History of corner, with reference to Vol. and pg., dates, surveyor; exact description of monument replaced; if location computed, by taped or EDM traverse; landowner, remarks, etc.

SEAL:

CORNER SET IN 1933 BY ROBERT CLARK. NO RECORD OF CORNER FOUND SINCE ORIGINAL SURVEYS. I SET THE CORNER ONLINE BETWEEN THE NW AND SW CORNERS, ALSO ONLINE W/ A FENCE TO THE WEST. VERIFIED THIS LOCATION USING EDM METHODS.



CERTIFIED CORRECT
David L. Antoni
 Registered Land Surveyor
 DATE: 12-20-97

TIE SKETCH

Show at least three (3) ties and monument

- LEGEND
 ⊕ 3/4" x 24" IRON BAR SET W/ CAP.
 ○ 1/2" x 15" IRON BAR SET
 ** EXISTING FENCE

